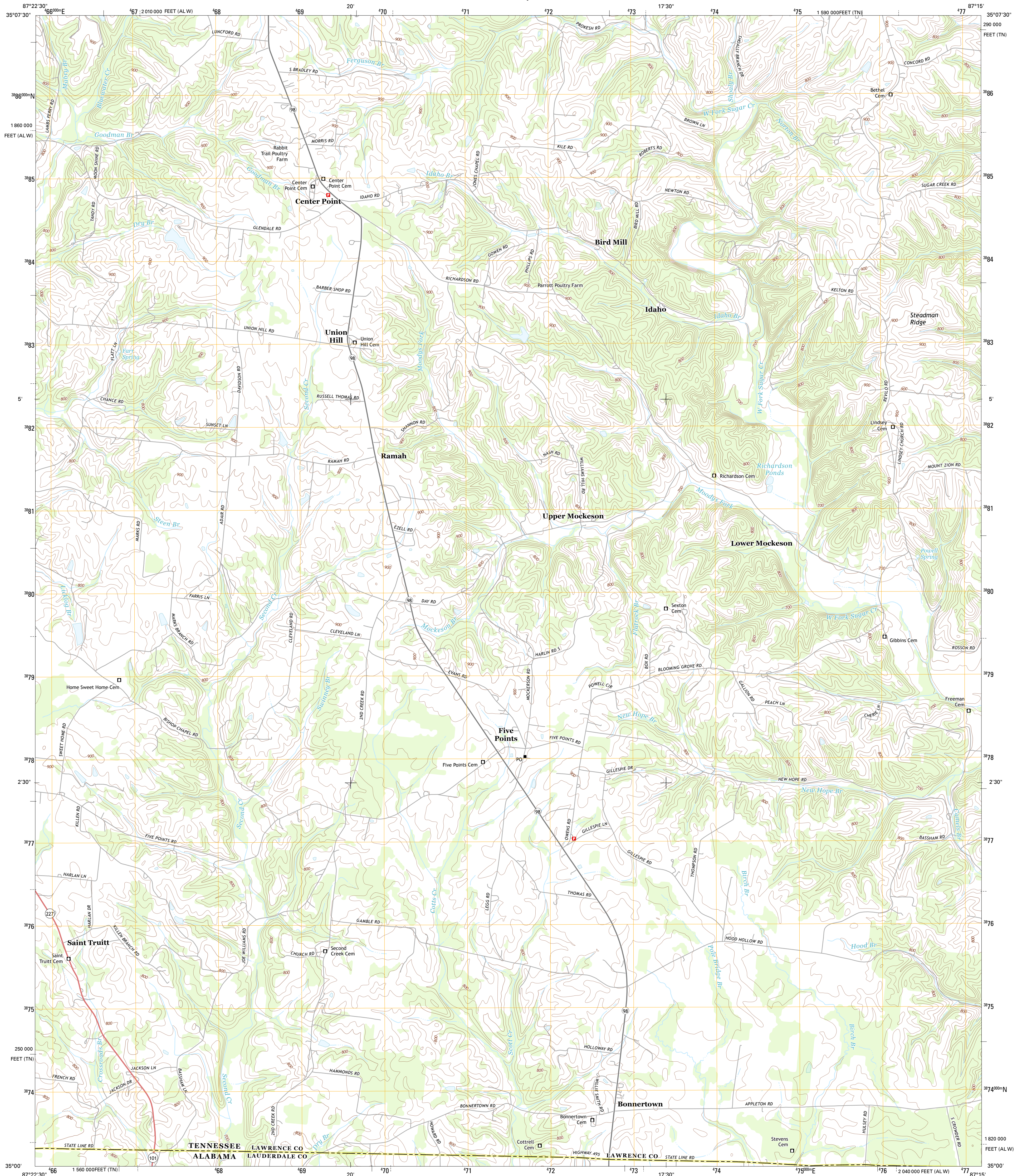




U.S. DEPARTMENT OF THE INTERIOR
U. S. GEOLOGICAL SURVEY



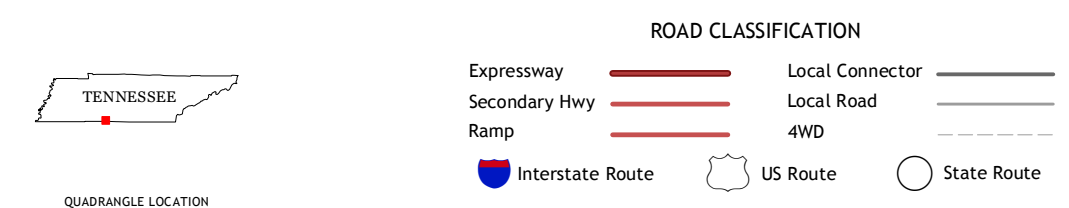
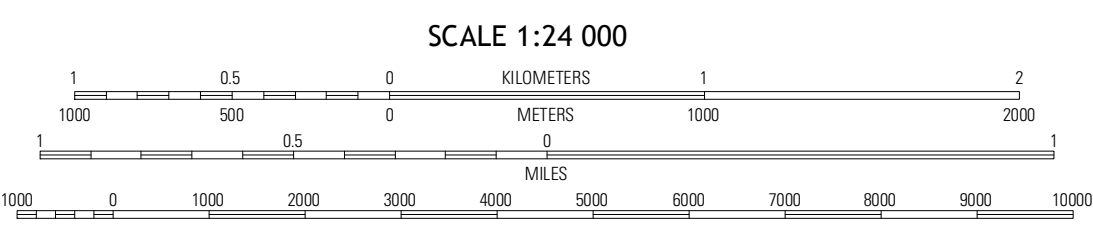
BONNERTOWN QUADRANGLE
TENNESSEE-ALABAMA
7.5-MINUTE SERIES



Produced by the United States Geological Survey
North American Datum of 1983 (NAD83)
World Geodetic System of 1984 (WGS84) Projection and
1 000-meter grid: Universal Transverse Mercator, Zone 16S
10 000-foot ticks: Tennessee Coordinate System of 1983,
Alabama Coordinate System of 1983 (west zone)

UTM GRID AND 2013 MAGNETIC NORTH DECLINATION AT CENTER OF SHEET

U.S. National Grid	100,000-m Square ID
DD	
Grid Zone Designation	16S



QUADRANGLE LOCATION

Long Branch	Lanrenewburg	Bedenham
Lowette	Bonnettown	Applenton
Center Hill	Lexington	Union Hill

CONTOUR INTERVAL 20 FEET
NORTH AMERICAN VERTICAL DATUM OF 1988

This map was produced to conform with the National Geospatial Program US Topo Product Standard, 2011. A metadata file associated with this product is draft version 0.6.11

BONNETTOWN, TN-AL
2013

ADJOINING 7.5 QUADRANGLES