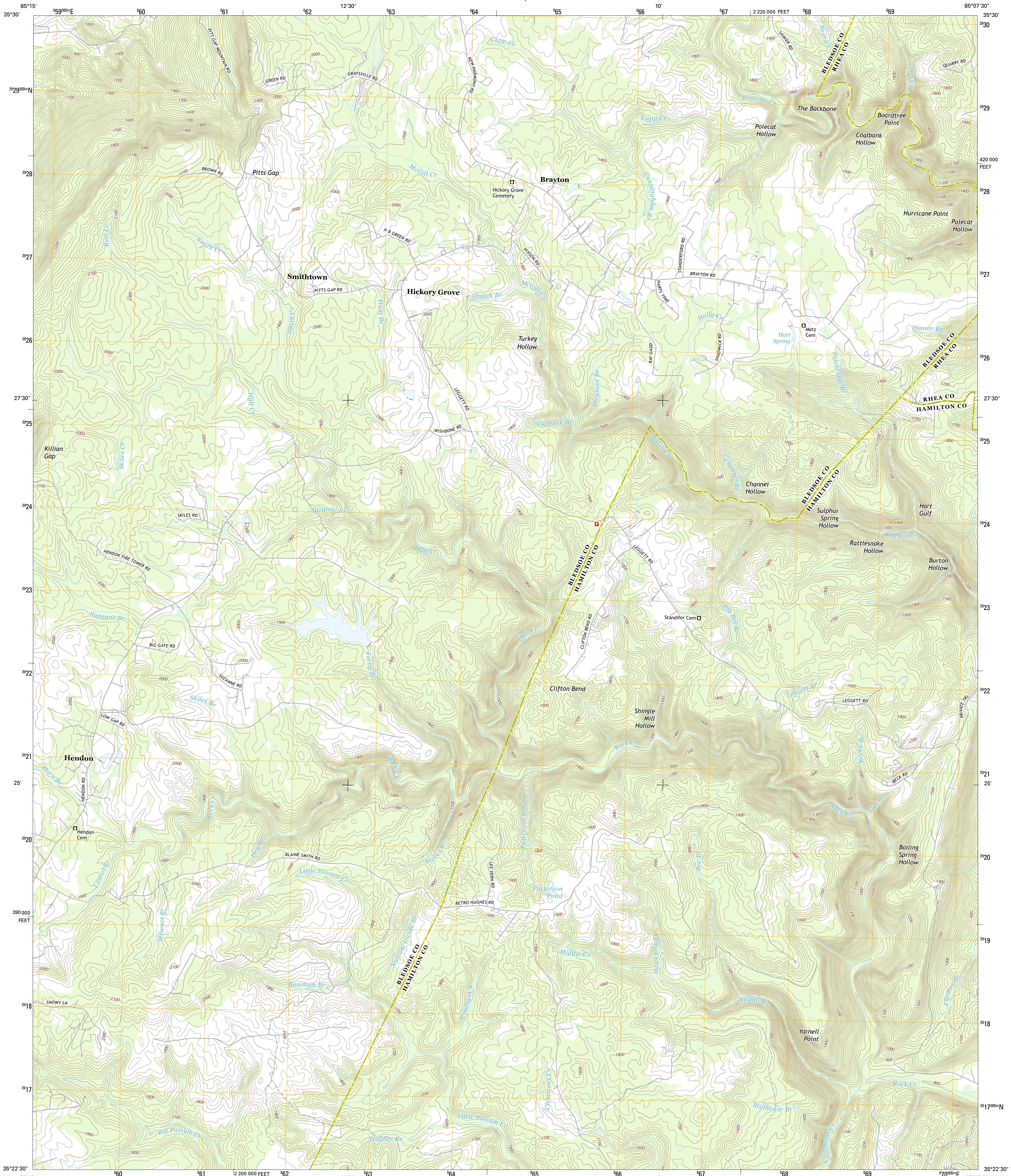




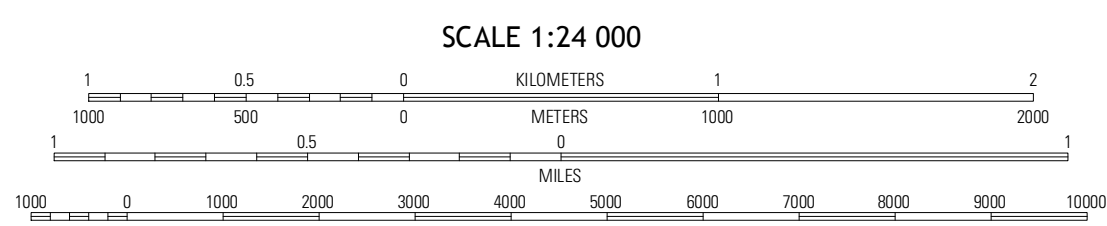
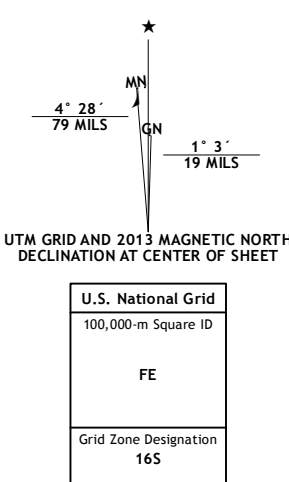
U.S. DEPARTMENT OF THE INTERIOR
U. S. GEOLOGICAL SURVEY



BRAYTON QUADRANGLE
TENNESSEE
7.5-MINUTE SERIES

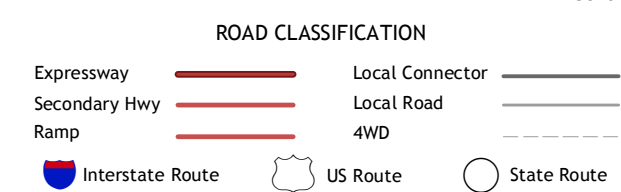


Produced by the United States Geological Survey
North American Datum of 1983 (NAD83)
World Geodetic System of 1984 (WGS84) Projection and
1 000-meter grid; Universal Transverse Mercator, Zone 16S
10 000-foot ticks; Tennessee Coordinate System of 1983



QUADRANGLE LOCATION

| | | |
|------------|-----------|-------------------|
| Bruckhill | Pikeville | Morgan Springs |
| Mount Airy | Brayton | Grayville |
| Henson Gap | Soddy | Grasshopper Creek |



BRAYTON, TN
2013

This map was produced to conform with the National Geospatial Program US Topo Product Standard, 2011. A metadata file associated with this product is draft version 0.6.11