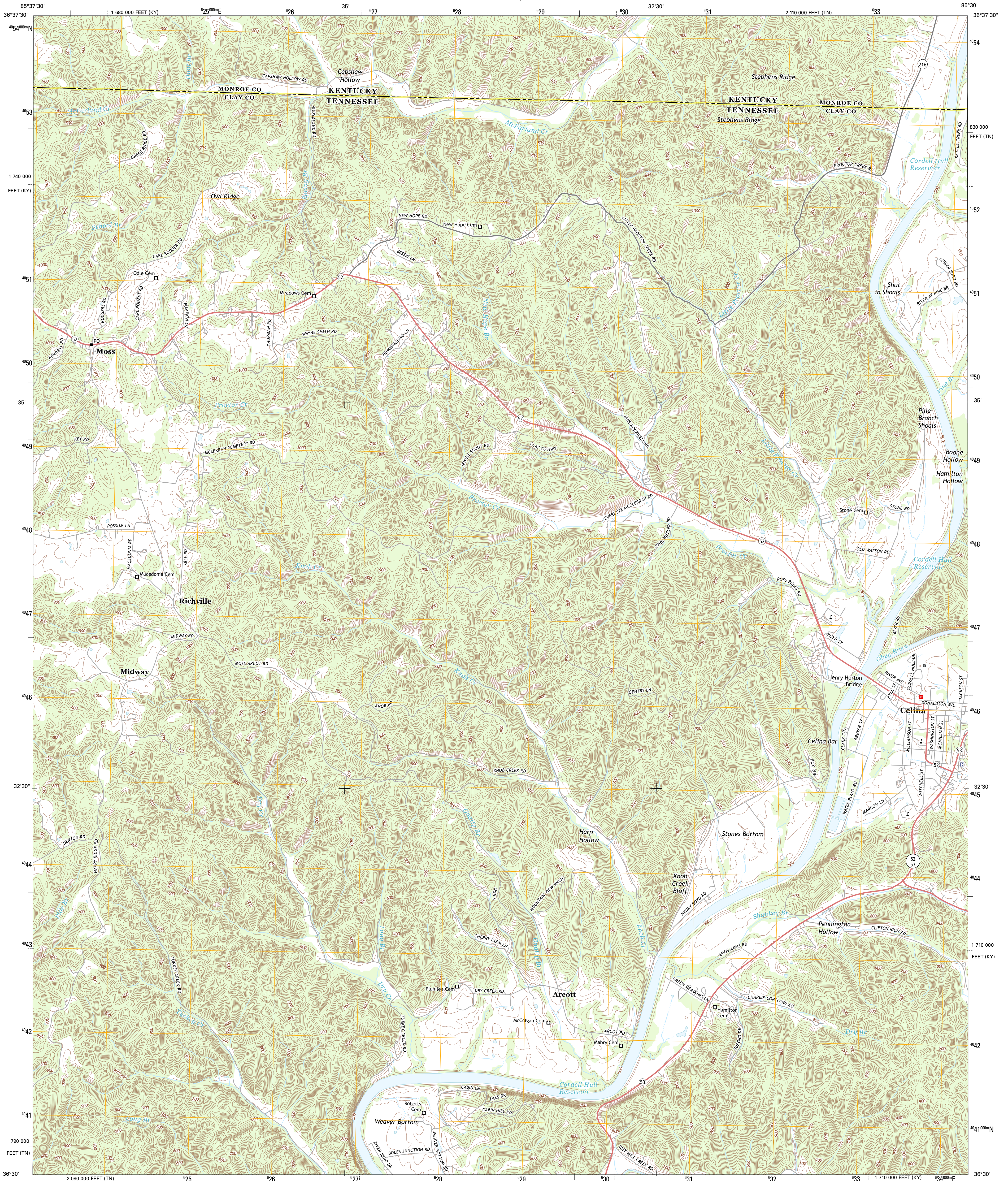




U.S. DEPARTMENT OF THE INTERIOR
U. S. GEOLOGICAL SURVEY

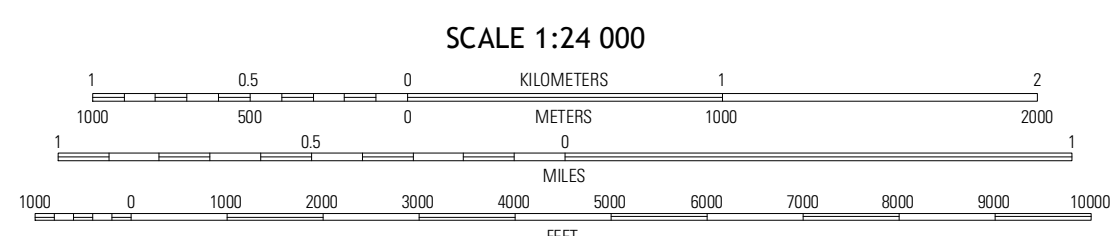
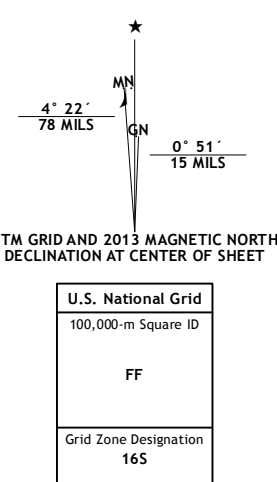


CELINA QUADRANGLE
TENNESSEE-KENTUCKY
7.5-MINUTE SERIES



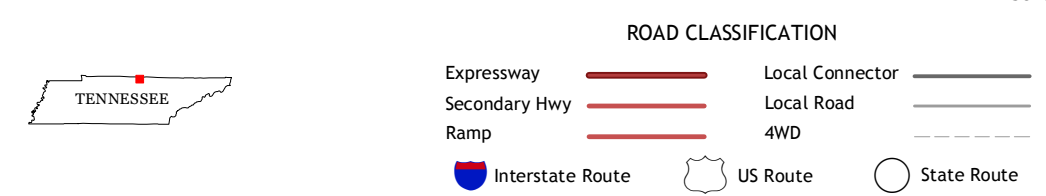
Produced by the United States Geological Survey
North American Datum of 1983 (NAD83)
World Geodetic System of 1984 (WGS84) Projection and 1 000-meter grid: Universal Transverse Mercator, Zone 16S
10 000-foot ticks: Tennessee Coordinate System of 1983,
Kentucky Coordinate System of 1983 (south zone)

Imagery: N/AIP, May 2012
Roads: 2006-2012 TomTom
Names: GNIS, 2012
Hydrography: National Hydrography Dataset, 2012
Contours: National Elevation Dataset, 2002
Boundaries: Census, IBWC, USGS, 1972 - 2012



CONTOUR INTERVAL 20 FEET
NORTH AMERICAN VERTICAL DATUM OF 1988

This map was produced to conform with the National Geospatial Program US Topo Product Standard, 2011. A metadata file associated with this product is draft version 0.6.11



QUADRANGLE LOCATION

Pimpkinsville	Vernon	Blacks Ferry
Union Hill	Celina	Dale Hollow Dam
Whitleyville	Barristown	Hillman

ADJOINING 7.5 QUADRANGLES

CELINA, TN-KY
2013