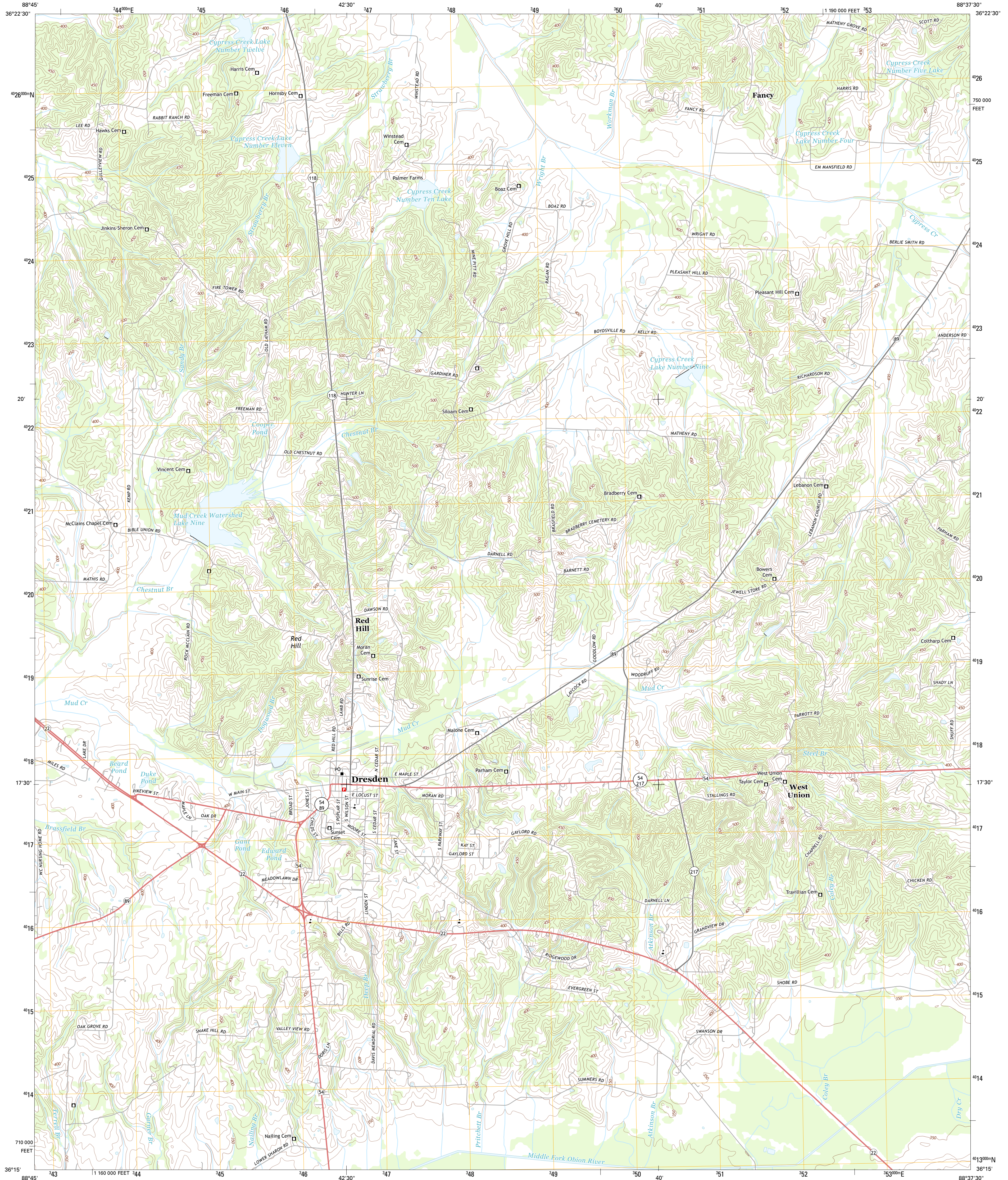




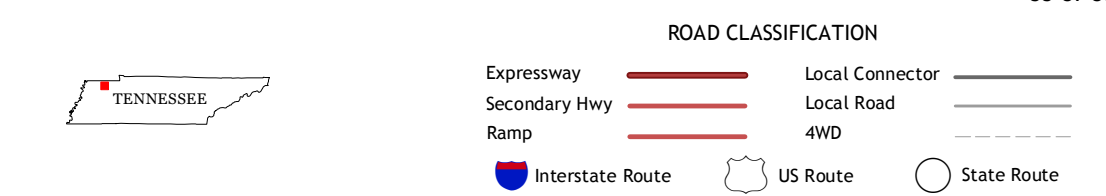
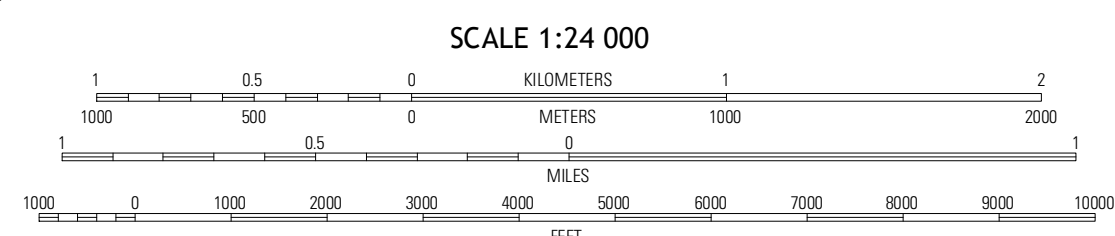
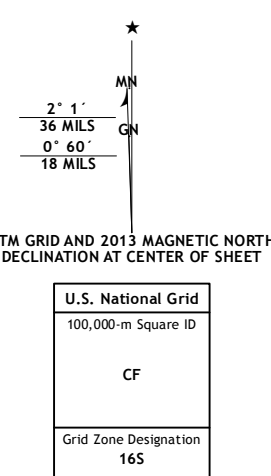
U.S. DEPARTMENT OF THE INTERIOR
U. S. GEOLOGICAL SURVEY



DRESDEN QUADRANGLE
TENNESSEE-WEAKLEY CO.
7.5-MINUTE SERIES



Produced by the United States Geological Survey
North American Datum of 1983 (NAD83)
World Geodetic System of 1984 (WGS84), Projection and
1 000-meter grid; Universal Transverse Mercator, Zone 16S
10 000-foot ticks; Tennessee Coordinate System of 1983



QUADRANGLE LOCATION

| | | |
|------------|-------------|------------|
| McConnell | Latham | Palmsville |
| Martin | Dresden | Cumo |
| Greenfield | Pillowville | McKenzie |

ADJOINING 7.5 QUADRANGLES

CONTOUR INTERVAL 10 FEET
NORTH AMERICAN VERTICAL DATUM OF 1988

This map was produced to conform with the National Geospatial Program US Topo Product Standard, 2011. A metadata file associated with this product is draft version 0.6.11

DRESDEN, TN
2013