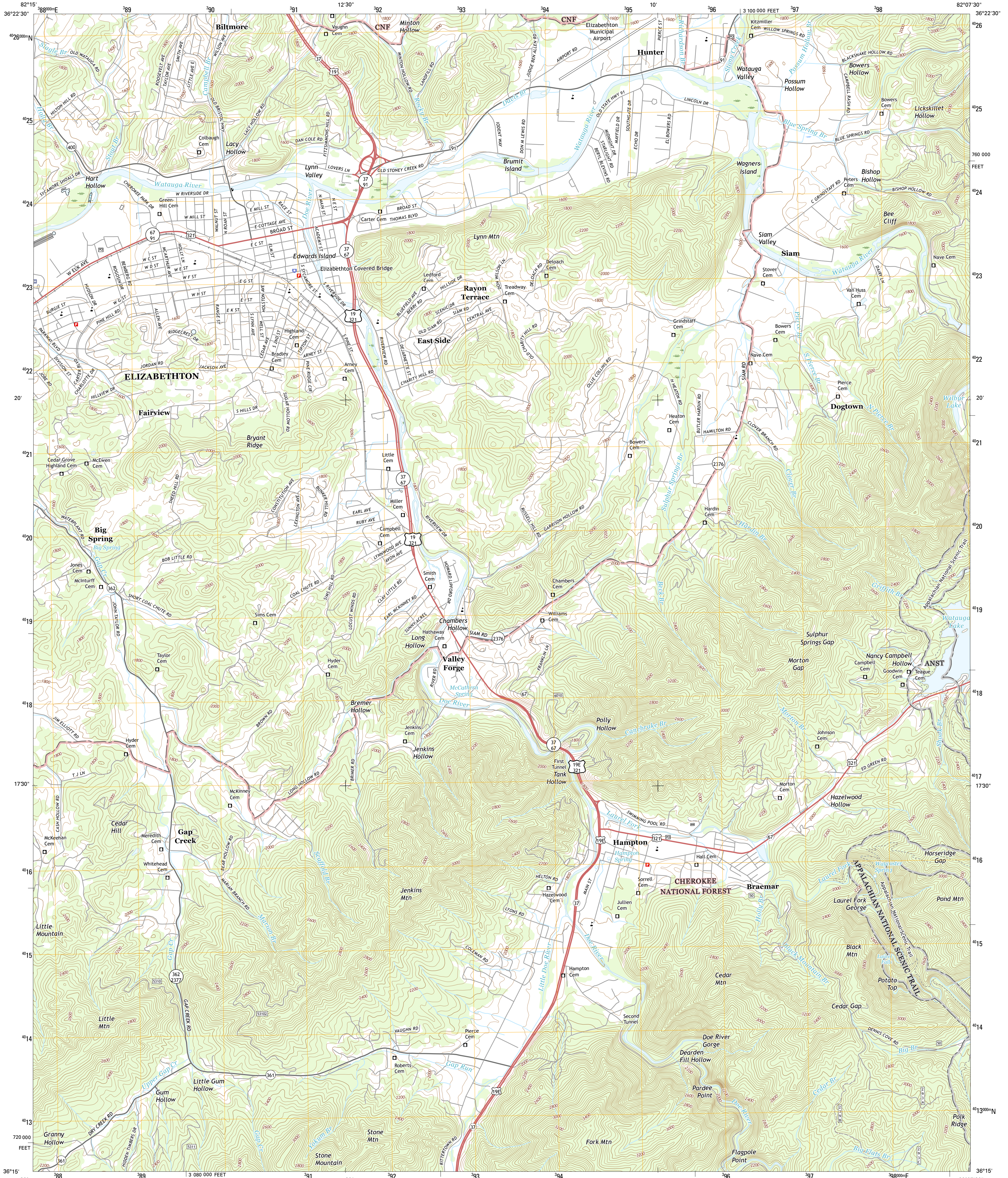




U.S. DEPARTMENT OF THE INTERIOR
U.S. GEOLOGICAL SURVEY



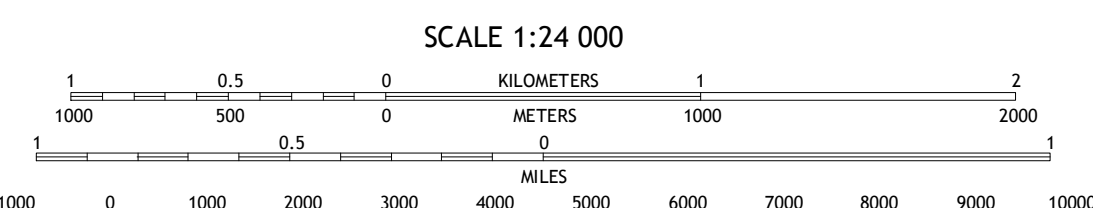
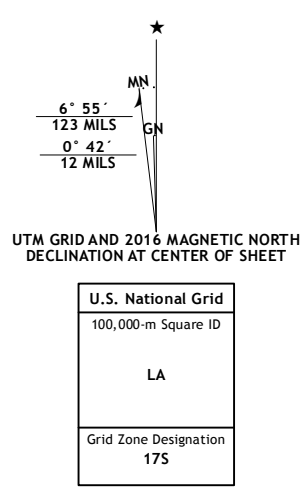
ELIZABETHTON QUADRANGLE
TENNESSEE-CARTER CO.
7.5-MINUTE SERIES



Produced by the United States Geological Survey
North American Datum of 1983 (NAD83)
World Geodetic System of 1984 (WGS84) Projection and
1000-meter grid; Universal Transverse Mercator, Zone 17S
10 000-foot ticks; Tennessee Coordinate System of 1983

This map is not a legal document. Boundaries may be
generalized for this map scale. Private lands within government
reservations may not be shown. Obtain permission before
entering private lands.

Imagery: NAI, May 2014
Roads: U.S. Census Bureau, 2015 - 2016
Roads within US Forest Service Lands: FSTopo Data
with limited Forest Service updates, 2012 - 2016
Names: GNIS, 2016
Hydrography: National Hydrography Dataset, 2014
Contours: National Elevation Dataset, 2001
Boundaries: Multiple sources; see metadata file 1972 - 2016
Wetlands: FWS National Wetlands Inventory 1977 - 2014



ROAD CLASSIFICATION

- Expressway
- Secondary Hwy
- Interstate Route
- FS Primary Route
- Local Connector
- Local Road
- 4WD
- US Route
- FS Passenger Route
- State Route
- FS High Clearance Route

Check with local Forest Service unit
for current travel conditions and restrictions.

1	2	3
4	5	6
6	7	8

ADJOINING QUADRANGLES

- Bluff City
- Keensburg
- Carter
- Johnson City
- Watauga Dam
- Unicoi
- Iron Mountain Gap
- White Rocks Mountain

ELIZABETHTON, TN
2016

