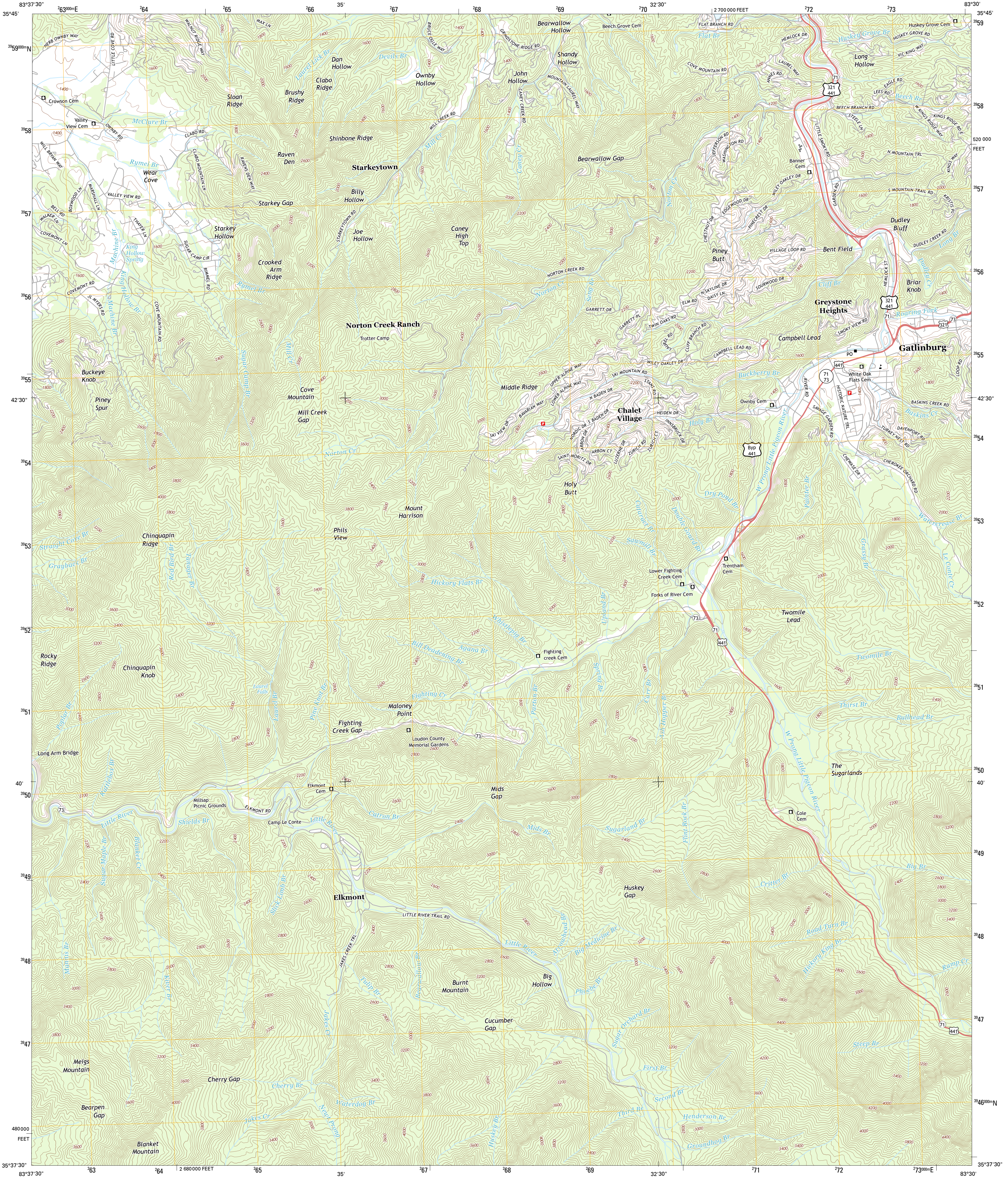




U.S. DEPARTMENT OF THE INTERIOR  
U. S. GEOLOGICAL SURVEY



GATLINBURG QUADRANGLE  
TENNESSEE-SEVIER CO.  
7.5-MINUTE SERIES



Produced by the United States Geological Survey  
North American Datum of 1983 (NAD83)  
World Geodetic System of 1984 (WGS84). Projection and  
1 000-meter grid: Universal Transverse Mercator, Zone 17S  
10 000-foot ticks: Tennessee Coordinate System of 1983

Imagery.....NAIP, June 2012  
Roads.....©2006-2012 TomTom  
Names.....©2006-2012 TomTom  
Hydrography.....National Hydrography Dataset, 2012  
Contours.....National Elevation Dataset, 2001  
Boundaries.....Census, IBWC, IBC, USGS, 1972-2012

UTM GRID AND 2011 MAGNETIC NORTH  
DECLINATION AT CENTER OF SHEET

U.S. National Grid
100,000-m Square ID
KV
Grid Zone Designation
17S

SCALE 1:24 000

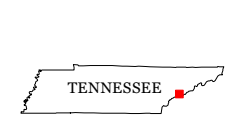
1 000 0 500 0 500 1000 KILOMETERS

1 000 0 500 0 500 1000 METERS

1 000 0 1000 2000 3000 4000 5000 6000 7000 8000 9000 10000 FEET

CONTOUR INTERVAL 40 FEET  
NORTH AMERICAN VERTICAL DATUM OF 1988

This map was produced to conform with the  
National Geospatial Program US Topo Product Standard, 2011.  
A metadata file associated with this product is draft version 0.6.11



QUADRANGLE LOCATION		
Walden Creek	Pigeon Forge	Richardson Cove
Wear Cove	Gatlinburg	Mount Le Conte
Thunderhead Mountain	Silvers Bald	Clingmans Dome

ADJOINING 7.5 QUADRANGLES

ROAD CLASSIFICATION

Expressway  
Secondary Hwy  
Ramp

Local Connector  
Local Road  
4WD

Interstate Route  
US Route  
State Route

GATLINBURG, TN  
2013