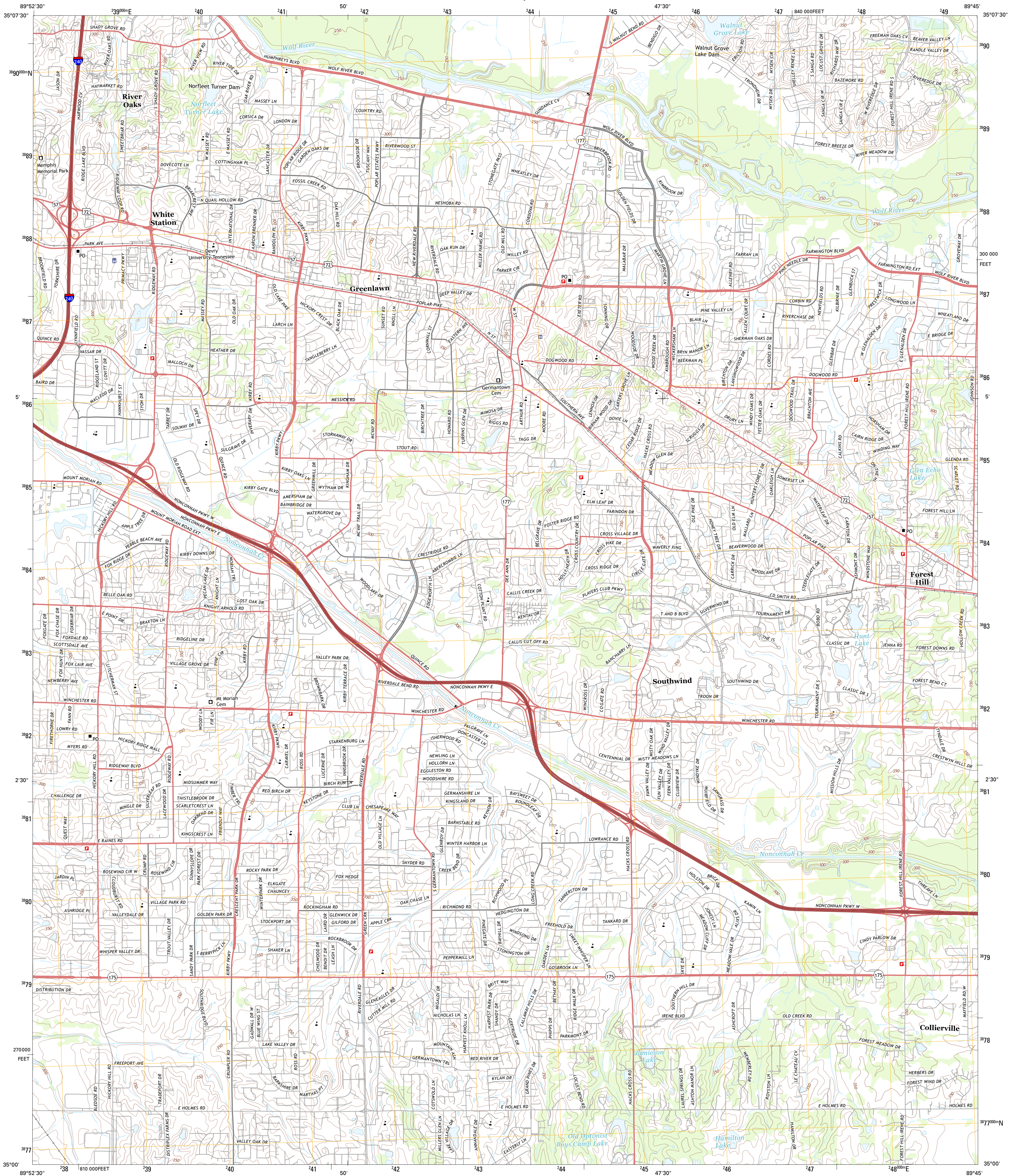




U.S. DEPARTMENT OF THE INTERIOR
U. S. GEOLOGICAL SURVEY



GERMANTOWN QUADRANGLE
TENNESSEE-SHELBY CO.
7.5-MINUTE SERIES

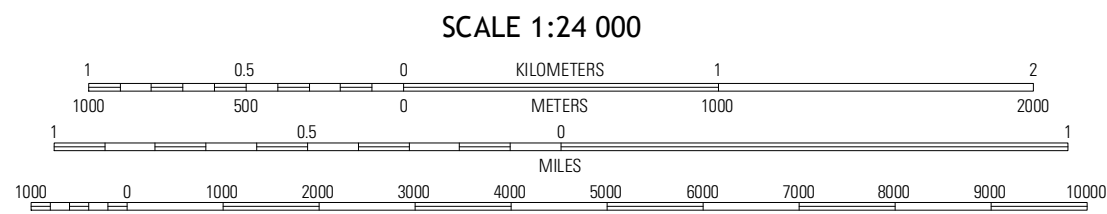


Produced by the United States Geological Survey
North American Datum of 1983 (NAD83)
World Geodetic System of 1984 (WGS84) Projection and
1 000-meter grid: Universal Transverse Mercator, Zone 16S
10 000-foot ticks: Tennessee Coordinate System of 1983

Imagery.....NAIP, June 2012
Roads.....©2006-2012 TomTom
Names.....GNIS, 2012
Hydrography.....National Hydrography Dataset, 2012
Contours.....National Elevation Dataset, 2001
Boundaries.....Census, IBWC, IBG, USGS, 1972-2012

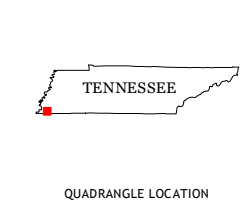
UTM GRID AND 2013 MAGNETIC NORTH
DECLINATION AT CENTER OF SHEET

U.S. National Grid
100,000-m Square ID
8D
Grid Zone Designation
16S



CONTOUR INTERVAL 10 FEET
NORTH AMERICAN VERTICAL DATUM OF 1988

This map was produced to conform with the
National Geospatial Program US Topo Product Standard, 2011.
A metadata file associated with this product is draft version 0.6.11



QUADRANGLE LOCATION		
Northeast	Memphis	Ellendale
Southeast	Memphis	Germantown
Pleasant Hill	Olive Branch	Byhalila
		Collierville

ROAD CLASSIFICATION

Expressway	Local Connector
Secondary Hwy	Local Road
Ramp	4WD
Interstate Route	US Route
	State Route

GERMANTOWN, TN
2013