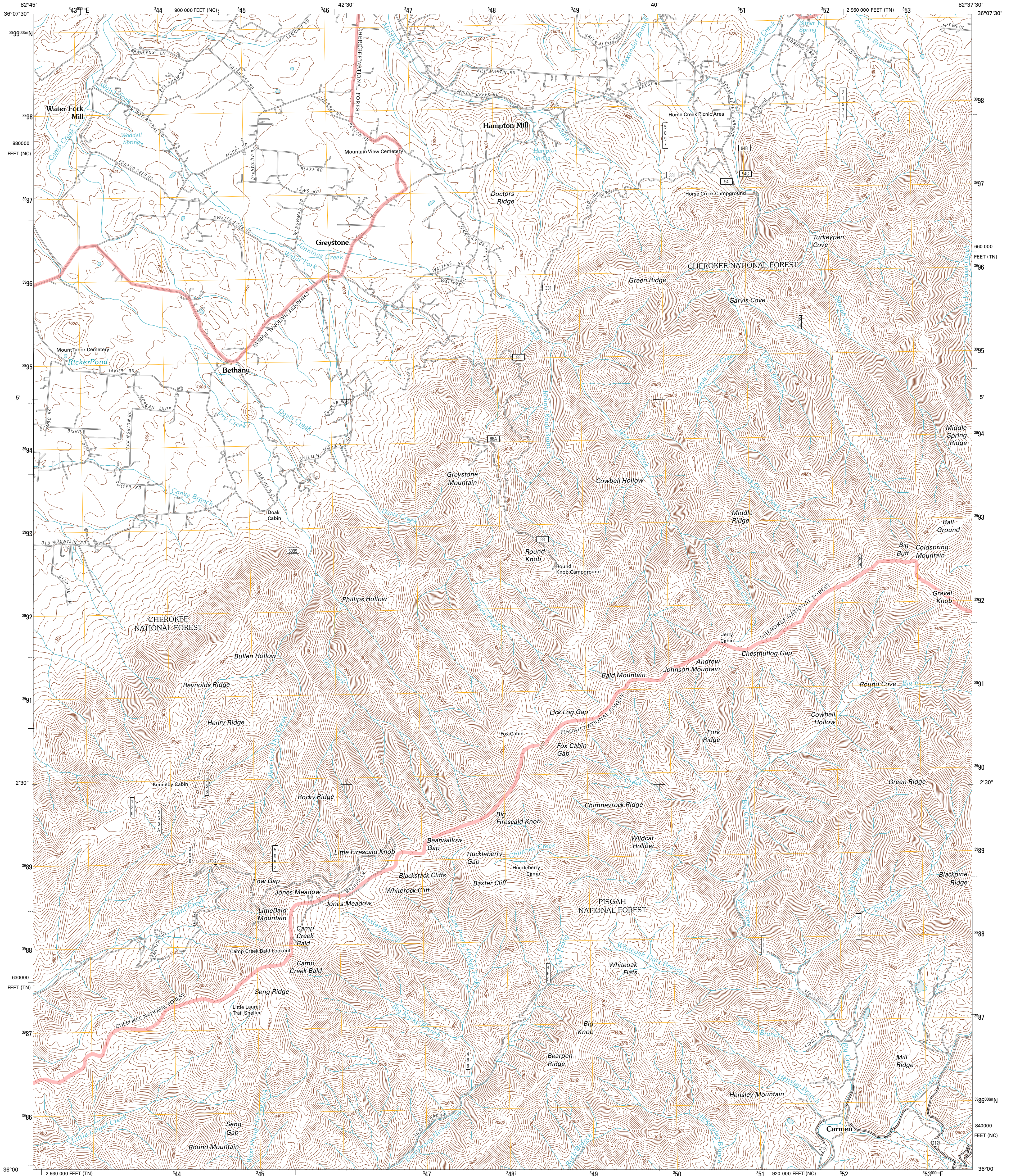




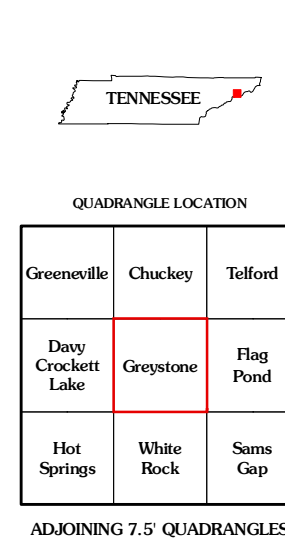
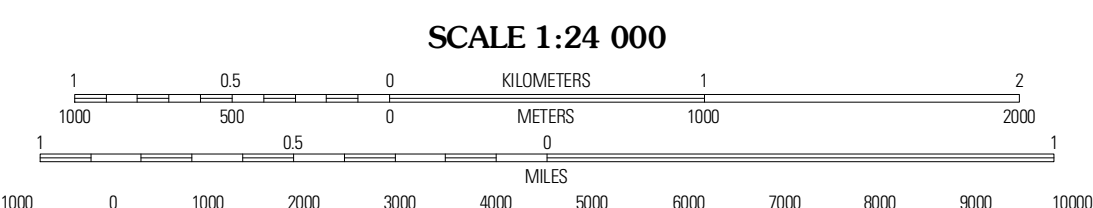
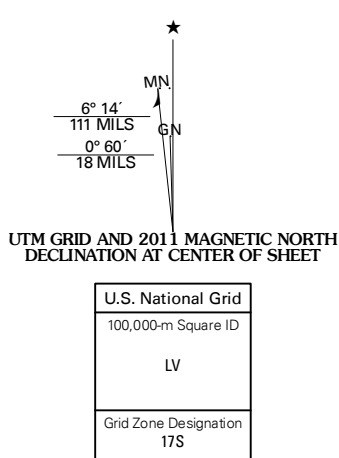
U.S. DEPARTMENT OF THE INTERIOR
U. S. GEOLOGICAL SURVEY



GREYSTONE QUADRANGLE
TENNESSEE-NORTH CAROLINA
7.5-MINUTE SERIES



Produced by the United States Geological Survey
North American Datum of 1983 (NAD83)
World Geodetic System of 1984 (WGS84). Projection and
1 000-foot ticks: Tennessee Coordinate System of 1983,
North Carolina Coordinate System of 1983



Check with local Forest Service unit
for current travel conditions and restrictions.

GREYSTONE, TN-NC
2011

ADJOINING 7.5 QUADRANGLES