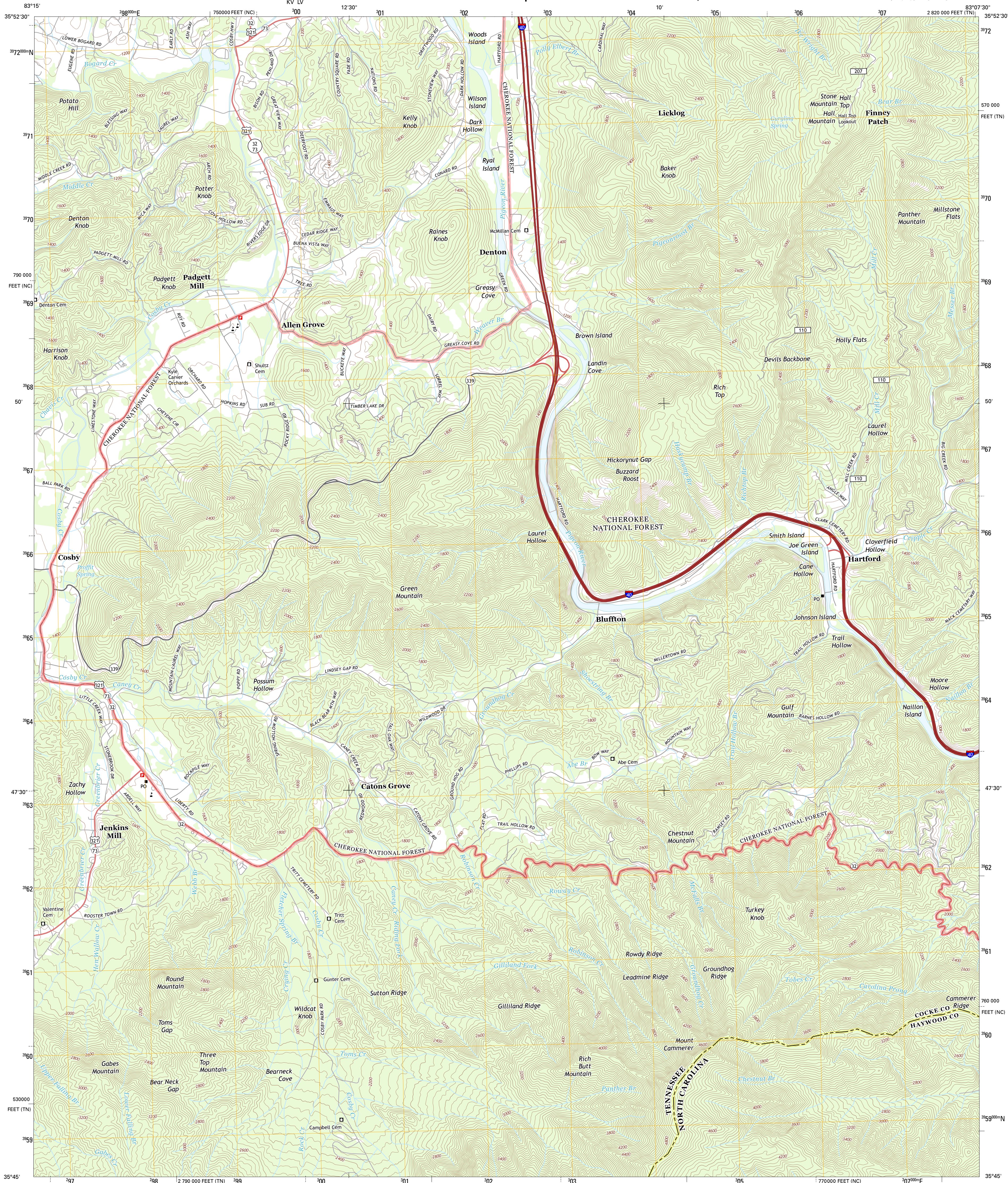




U.S. DEPARTMENT OF THE INTERIOR
U. S. GEOLOGICAL SURVEY



HARTFORD QUADRANGLE
TENNESSEE-NORTH CAROLINA
7.5-MINUTE SERIES



Produced by the United States Geological Survey
North American Datum of 1983 (NAD83)
World Geodetic System of 1984 (WGS84). Projection and
1 000-meter grid: Universal Transverse Mercator, Zone 17S
10 000-foot ticks: Tennessee Coordinate System of 1983, North
Carolina Coordinate System of 1983

Imagery.....NAIP, June 2012
Roads.....©2006-2012, TomTom
Roads within US Forest Service Lands.....FS Topo Data
with limited Forest Service updates, 2012
Names.....GNIS, 2012
Hydrography.....National Hydrography Dataset, 2012
Contours.....National Elevation Dataset, 2001
Boundaries.....Census, IBWC, IBC, USGS, 1972 - 2012

UTM GRID AND 2013 MAGNETIC NORTH
DECLINATION AT CENTER OF SHEET

U.S. National Grid
100,000-m Square ID
KV LV
Grid Zone Designation
17S

SCALE 1:24 000
1 000 000 500 000 0 500 1000 2000
KILOMETERS
1 000 000 500 000 0 500 1000 2000
METERS
1 000 000 500 000 0 500 1000 2000
MILES
1 000 000 500 000 0 500 1000 2000
FEET

CONTOUR INTERVAL 40 FEET
NORTH AMERICAN VERTICAL DATUM OF 1988
This map was produced to conform with the
National Geospatial Program US Topo Product Standard, 2011.
A metadata file associated with this product is draft version 0.6.11



QUADRANGLE LOCATION		
Chestnut Hill	Newport	Neddy Mountain
Jones Cove	Hartford	Waterville
Mount Guyot	Lufkin Knob	Cove Creek Gap

ADJOINING 7.5 QUADRANGLES

ROAD CLASSIFICATION
Expressway
Secondary Hwy
Ramp
Interstate Route
FS Primary Route
Local Connector
Local Road
4WD
US Route
FS Passenger Route
FS High Route
Clearance Route

Check with local Forest Service unit
for current travel conditions and restrictions.

HARTFORD, TN-NC
2013