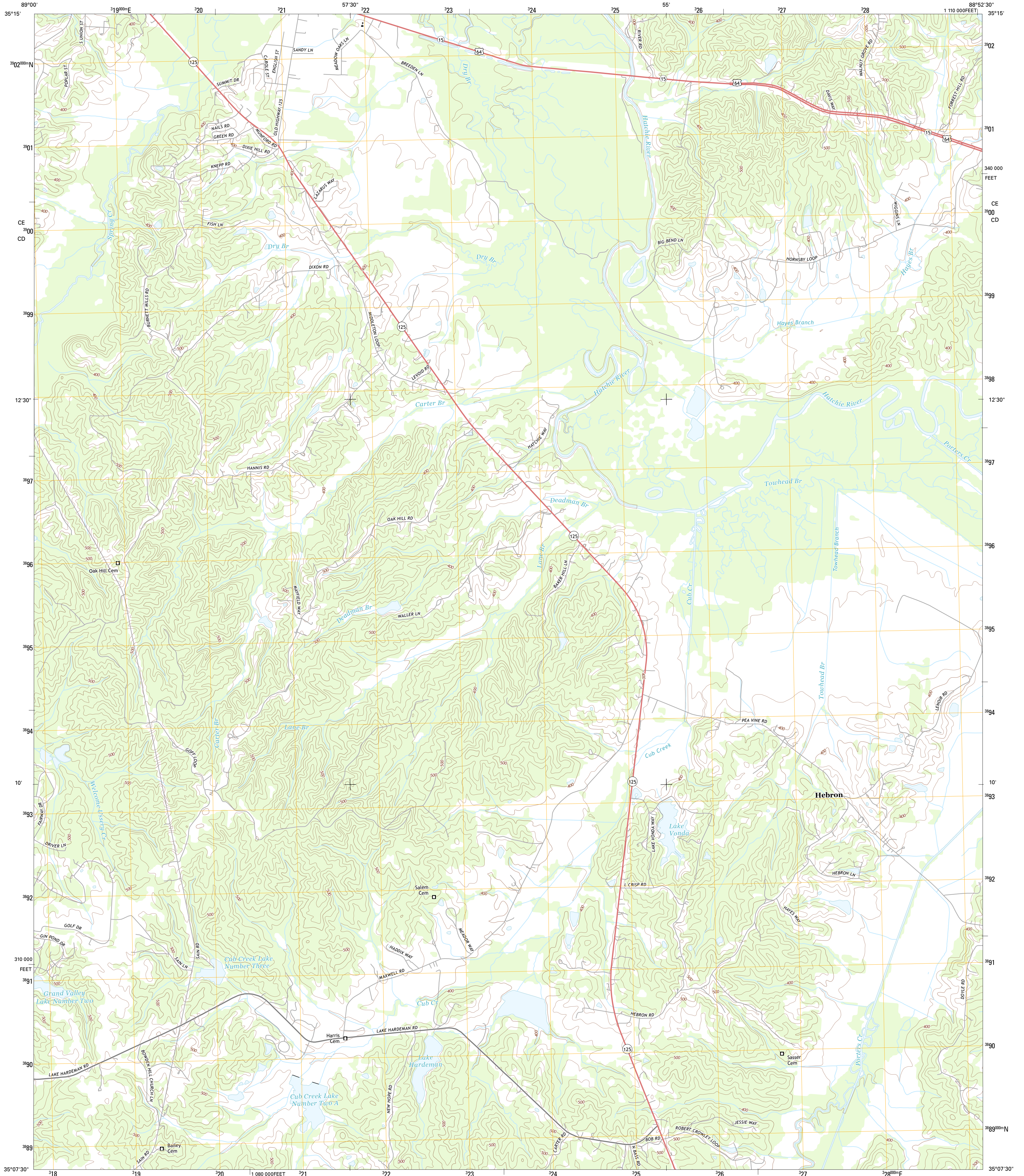




U.S. DEPARTMENT OF THE INTERIOR
U. S. GEOLOGICAL SURVEY



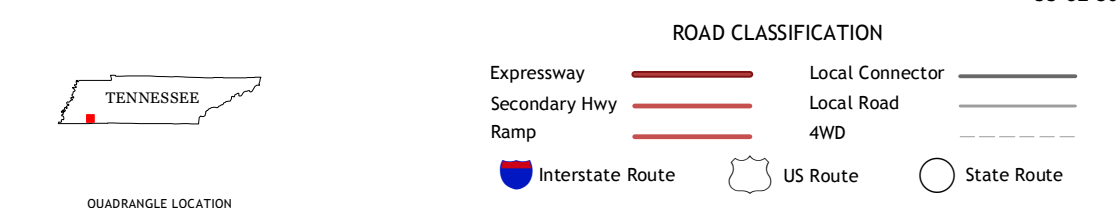
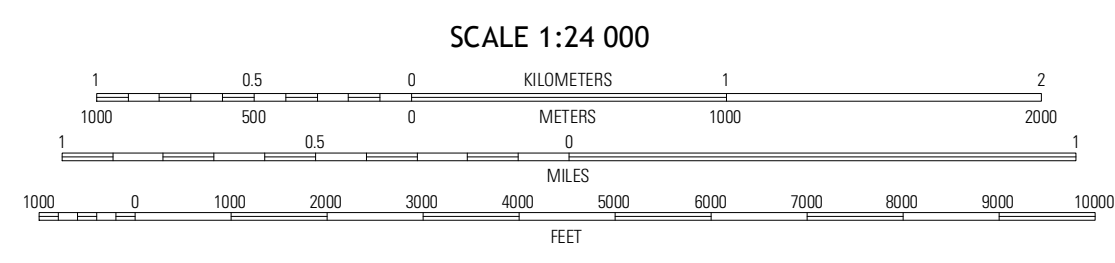
HEBRON QUADRANGLE
TENNESSEE-HARDEMAN CO.
7.5-MINUTE SERIES



Produced by the United States Geological Survey
North American Datum of 1983 (NAD83)
World Geodetic System of 1984 (WGS84) Projection and
1 000-meter grid: Universal Transverse Mercator, Zone 16S
10 000-foot ticks: Tennessee Coordinate System of 1983

UTM GRID AND 2013 MAGNETIC NORTH DECLINATION AT CENTER OF SHEET

| | | |
|-----------------------|-----|-----|
| U.S. National Grid | CE | 700 |
| 100,000-m Square ID | CD | |
| Grid Zone Designation | 16S | |



QUADRANGLE LOCATION

| | | |
|--------------|--------------|------------|
| Bolivar West | Bolivar East | Siletion |
| Middleburg | Hebron | Hornsbv |
| Salsbury | Middletn | Peachontas |

CONTOUR INTERVAL 20 FEET
NORTH AMERICAN VERTICAL DATUM OF 1988

This map was produced to conform with the National Geospatial Program US Topo Product Standard, 2011. A metadata file associated with this product is draft version 0.6.11

HEBRON, TN
2013

ADJOINING 7.5 QUADRANGLES