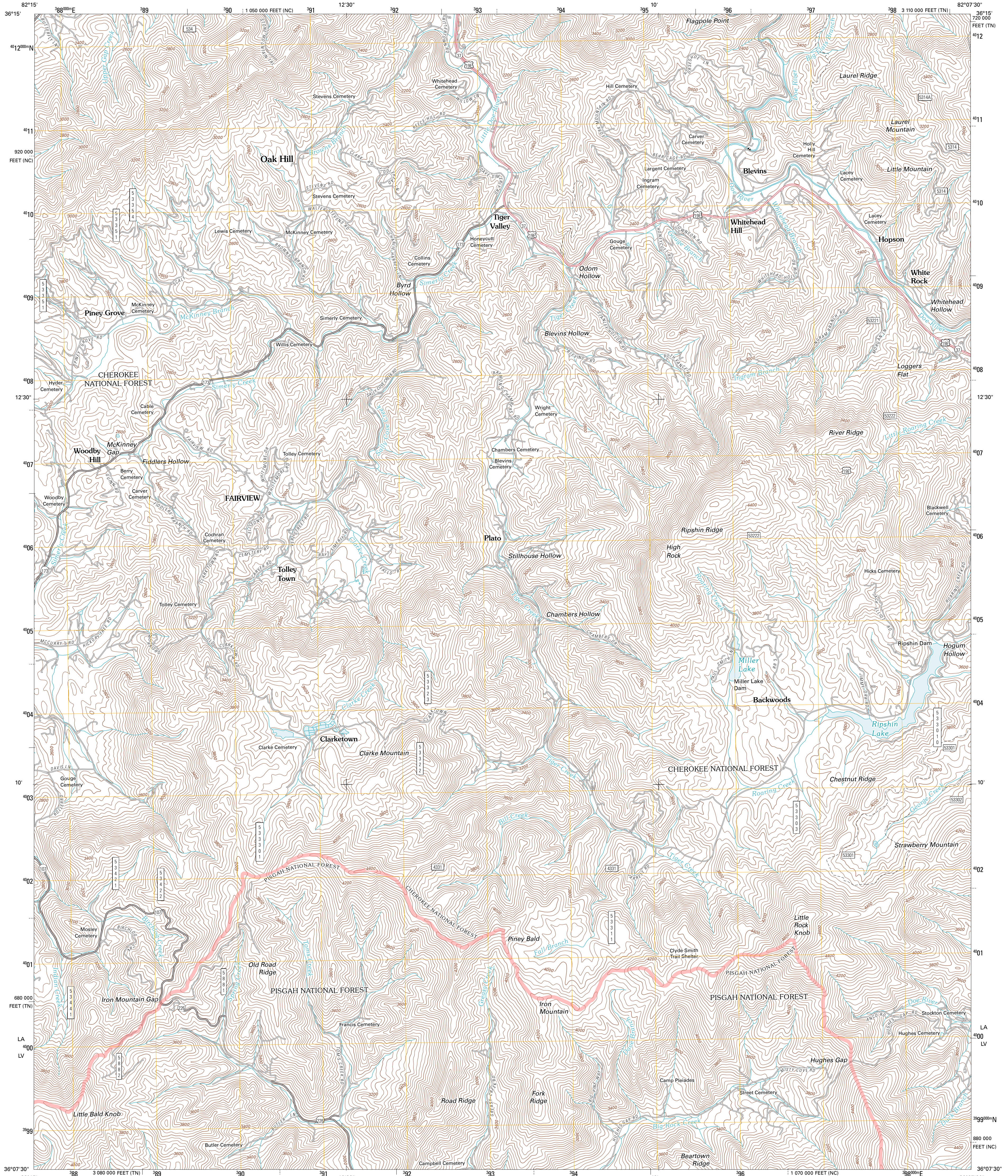




U.S. DEPARTMENT OF THE INTERIOR
U. S. GEOLOGICAL SURVEY

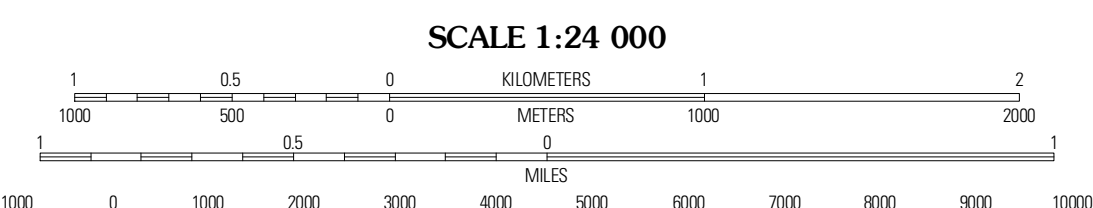
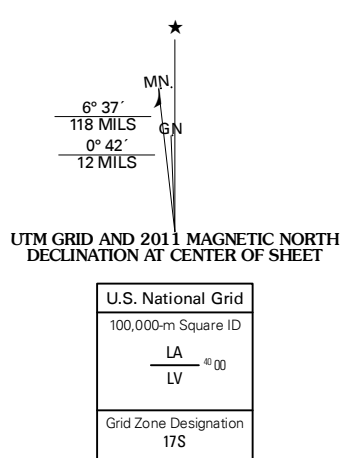


IRON MOUNTAIN GAP QUADRANGLE
TENNESSEE-NORTH CAROLINA
7.5-MINUTE SERIES



Produced by the United States Geological Survey
North American Datum of 1983 (NAD83)
World Geodetic System of 1984 (WGS84). Projection and
1000-meter grid: Universal Transverse Mercator, Zone 17S
10 000-foot ticks: Tennessee Coordinate System of 1983,
North Carolina Coordinate System of 1983

Imagery:.....NAP, April 2010
Roads:.....©2006-2010 Tele Atlas
Roads within US Forest Service Lands:.....FS Topo Data
with limited Forest Service updates, 2009
Names:.....GNIS, 2010
Hydrography:.....National Hydrography Dataset, 2010
Contours:.....National Elevation Dataset, 2001



CONTOUR INTERVAL 40 FEET
NORTH AMERICAN VERTICAL DATUM OF 1988
This map was produced to conform with version 0.5.10 of the
draft USGS Standards for 7.5-Minute Quadrangle Maps.
A metadata file associated with this product is draft version 0.5.12

ROAD CLASSIFICATION

	Interstate Route		State Route
	US Route		Local Road
	Ramp		4WD
	FS Interstate Route		FS US Route
	FS Primary Route		FS Passenger Route
	FS High Clearance Route		State Route

Check with local Forest Service unit for current travel conditions and restrictions.

QUADRANGLE LOCATION

Johnson City	Elizabeth	Watauga Dam
Unicoi	Iron Mountain Gap	White Mountain
Hendlake	Bakersville	Carvers Gap

ADJOINING 7.5 QUADRANGLES

IRON MOUNTAIN GAP, TN-NC
2011