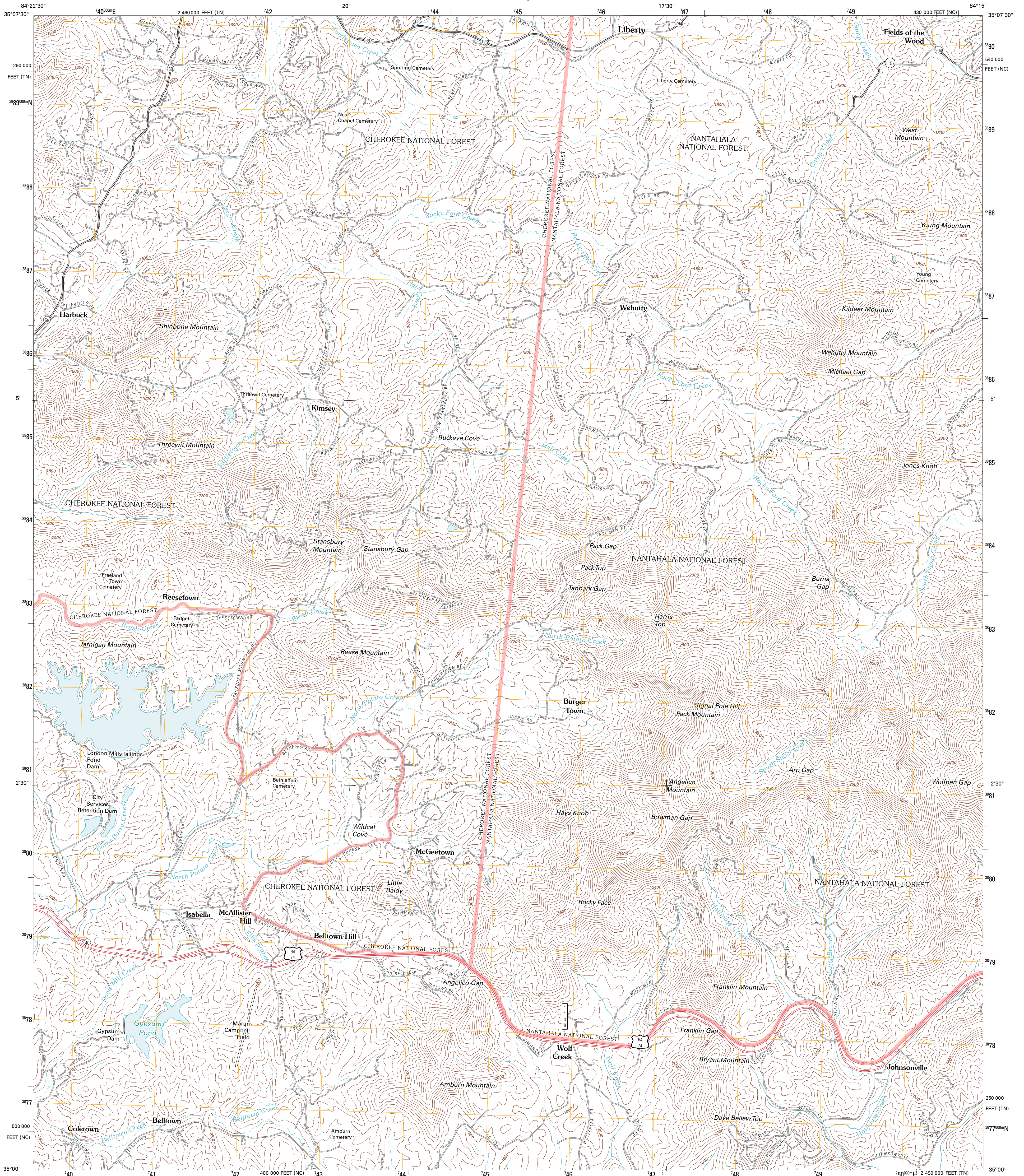




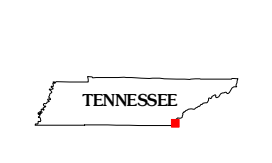
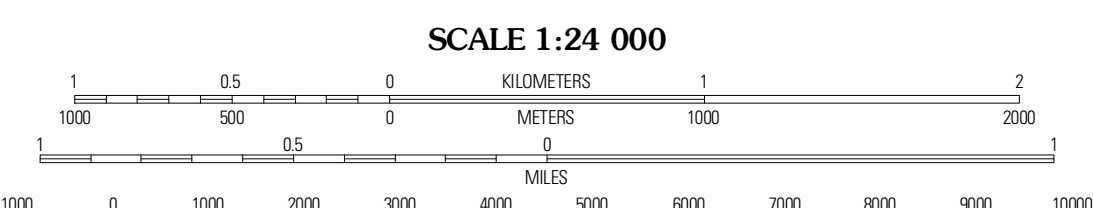
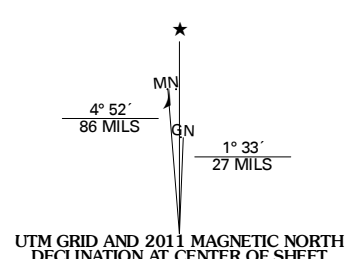
U.S. DEPARTMENT OF THE INTERIOR
U. S. GEOLOGICAL SURVEY



ISABELLA QUADRANGLE
TENNESSEE-NORTH CAROLINA
7.5-MINUTE SERIES



Produced by the United States Geological Survey
North American Datum of 1983 (NAD83)
World Geospatial System of 1984 (WGS84). Projection and
1 000-meter grid; Universal Transverse Mercator, Zone 16S
10 000-foot ticks; Tennessee Coordinate System of 1983,
North Carolina Coordinate System of 1983



ROAD CLASSIFICATION

| | | | |
|--|-------------------------|--|--------------------|
| | Interstate Route | | State Route |
| | US Route | | Local Road |
| | 4WD | | 4WD |
| | FS Primary Route | | FS Passenger Route |
| | FS High Clearance Route | | State Route |

QUADRANGLE LOCATION

| | | |
|-----------|---------------|-----------------|
| McFarland | Farmer | Ukaha |
| Ducktown | Isabella | Persimmon Creek |
| Epworth | Mineral Bluff | Colberson |

Imagery:.....NAP, April 2010
Roads:.....©2006-2010 Tele Atlas
Roads within US Forest Service Lands:.....FSTopo Data with limited Forest Service updates, 2009
Names:.....CNS, 2010
Hydrography:.....National Hydrography Dataset, 2010
Contours:.....National Elevation Dataset, 2008

U.S. National Grid
100,000-m Square ID
00
Grid Zone Designation
18S

CONTOUR INTERVAL 40 FEET
NORTH AMERICAN VERTICAL DATUM OF 1988
This map was produced to conform with version 0.5.10 of the
draft USGS Standards for 7.5-Minute Quadrangle Maps.
A metadata file associated with this product is draft version 0.5.12

ISABELLA, TN-NC
2011

ADJOINING 7.5 QUADRANGLES