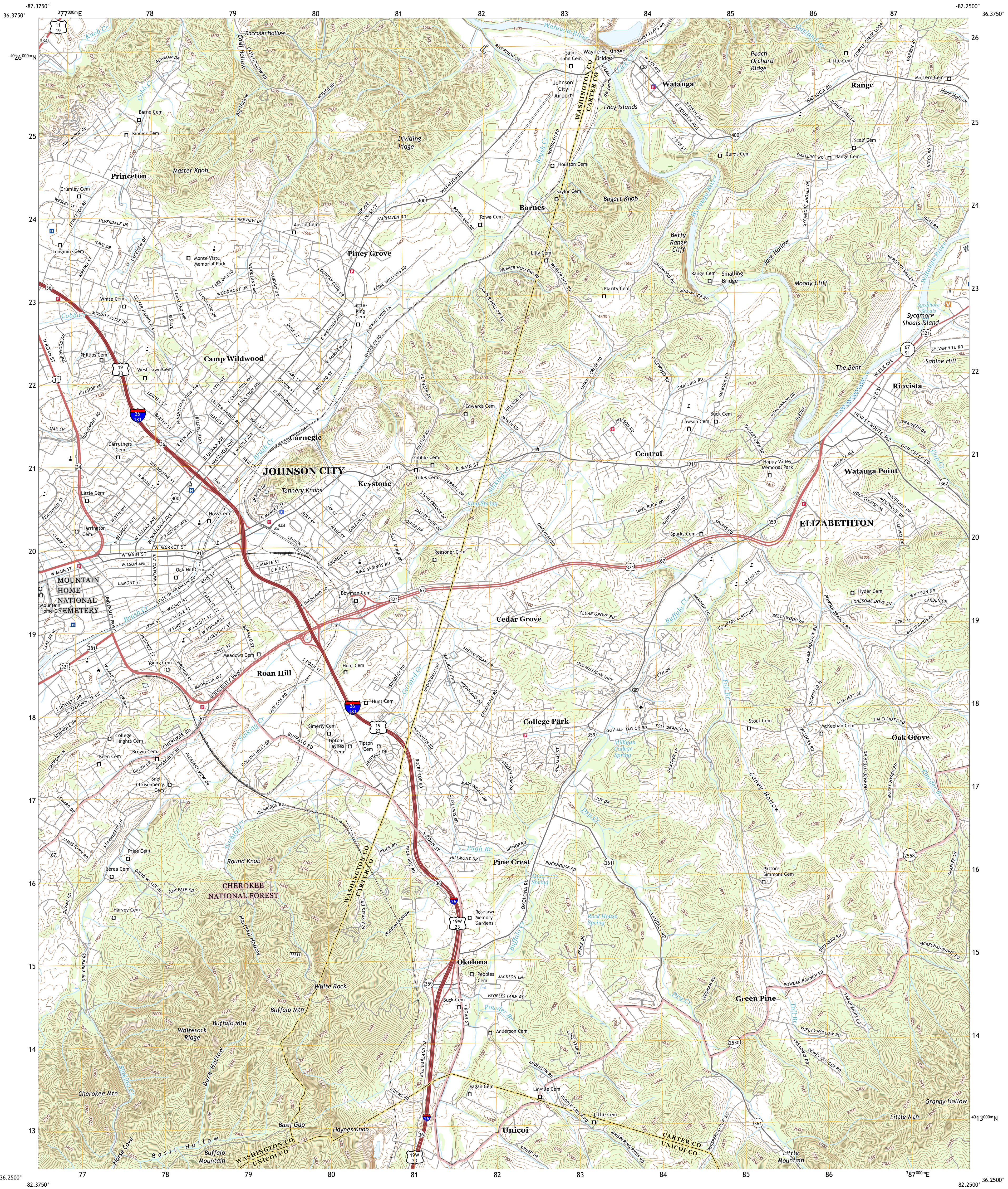




U.S. DEPARTMENT OF THE INTERIOR
U.S. GEOLOGICAL SURVEY

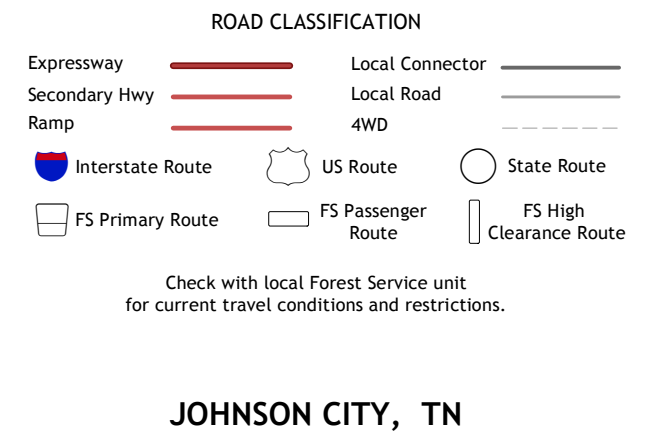
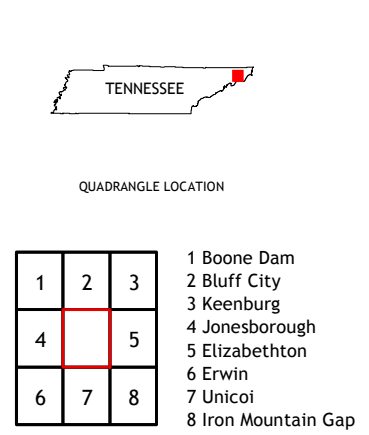
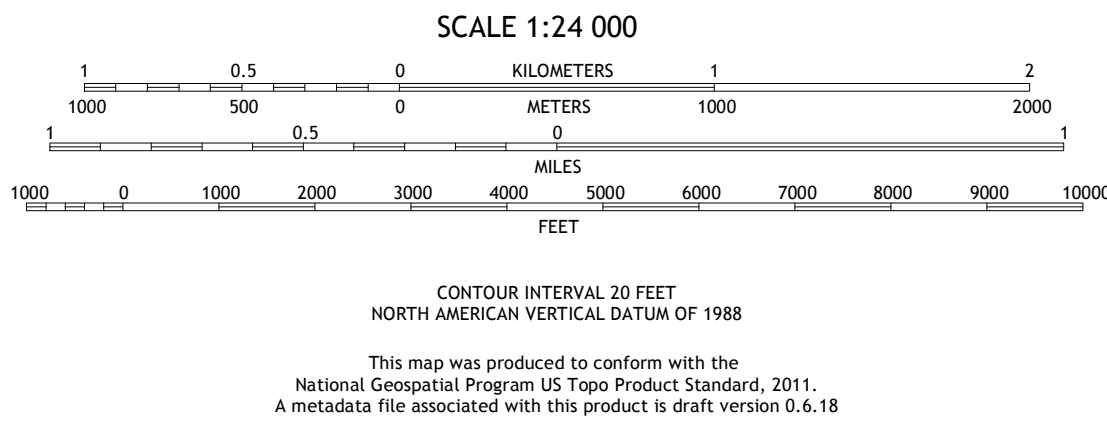
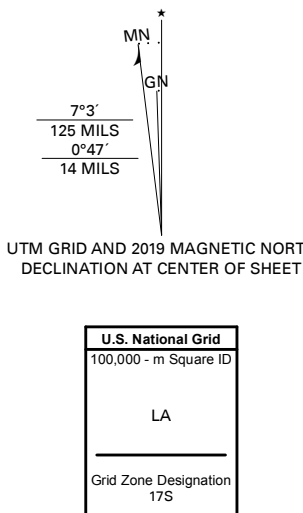


JOHNSON CITY QUADRANGLE
TENNESSEE
7.5-MINUTE SERIES



Produced by the United States Geological Survey
North American Datum of 1983 (NAD83)
World Geodetic System of 1984 (WGS84). Projection and
1 000-meter grid/Universal Transverse Mercator, Zone 17S
This map is not a legal document. Boundaries may be
generalized for this map scale. Private lands within government
reservations may not be shown. Obtain permission before
entering private lands.

Imagery.....NAIP, April 2016 - October 2016
Roads.....U.S. Census Bureau, 2016
Roads within US Forest Service Lands.....FS/Topo
Data with limited Forest Service updates, 2012
Names.....GNIS, 1980 - 2019
Hydrography.....National Hydrography Dataset, 2017
Contours.....National Elevation Dataset, 2017
Boundaries.....Multiple sources: see metadata file 2017 - 2018
Wetlands.....FWS National Wetlands Inventory 1983 - 1986



JOHNSON CITY, TN
2019

