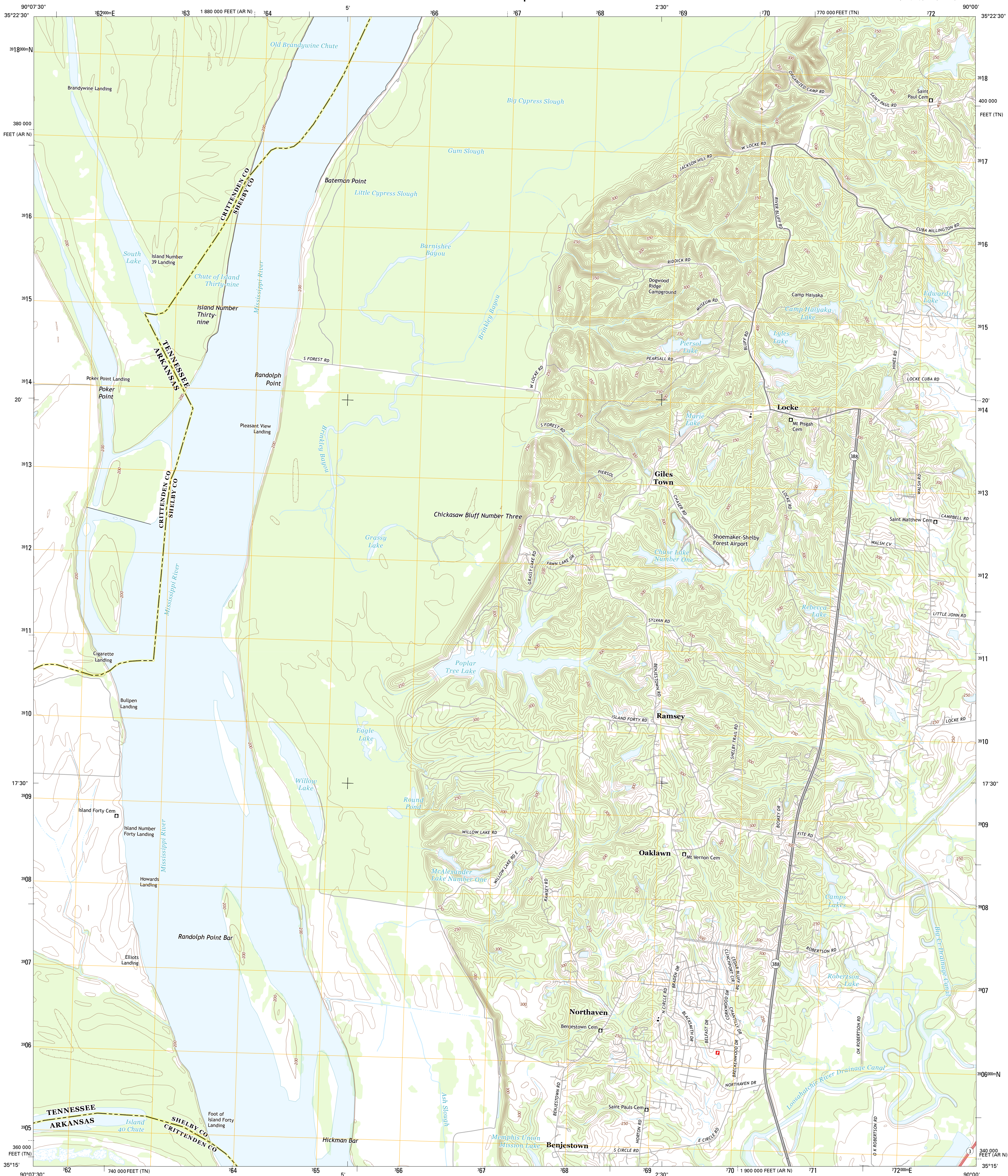




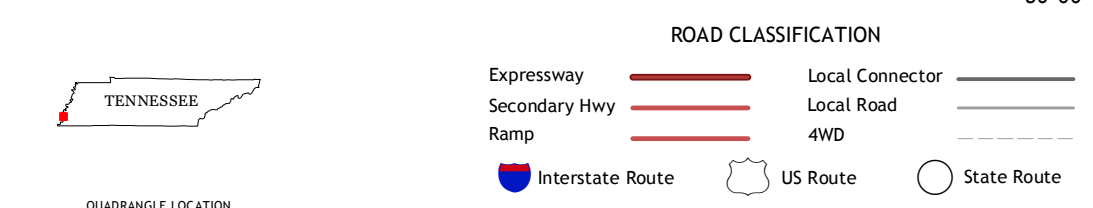
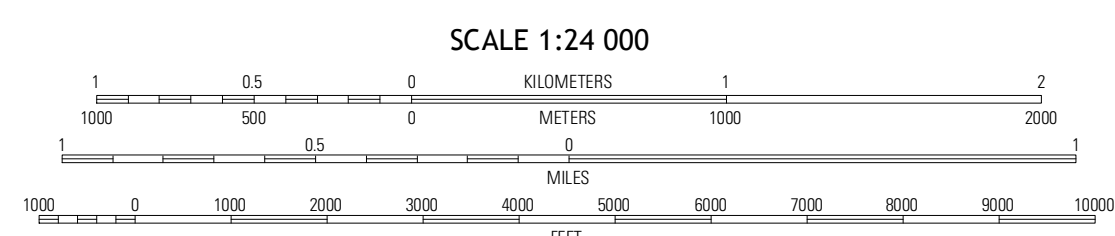
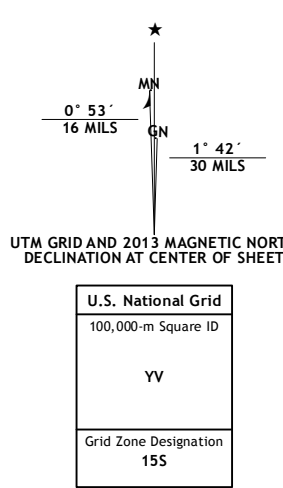
U.S. DEPARTMENT OF THE INTERIOR
U. S. GEOLOGICAL SURVEY



LOCKE QUADRANGLE
TENNESSEE-ARKANSAS
7.5-MINUTE SERIES



Produced by the United States Geological Survey
North American Datum of 1983 (NAD83)
World Geodetic System of 1984 (WGS84). Projection and
1 000-meter grid: Universal Transverse Mercator, Zone 15S
10 000-foot ticks: Tennessee Coordinate System of 1983,
Arkansas Coordinate System of 1983 (north zone)



QUADRANGLE LOCATION

Freshmans Bayou	Pean Point	Drummonds
Jericho	Locke	Millington
West Memphis	Northwest Memphis	Northeast Memphis

ADJOINING 7.5 QUADRANGLES

CONTOUR INTERVAL 10 FEET
NORTH AMERICAN VERTICAL DATUM OF 1988
This map was produced to conform with the
National Geospatial Program US Topo Product Standard, 2011.
A metadata file associated with this product is draft version 0.6.11

LOCKE, TN-AR
2013