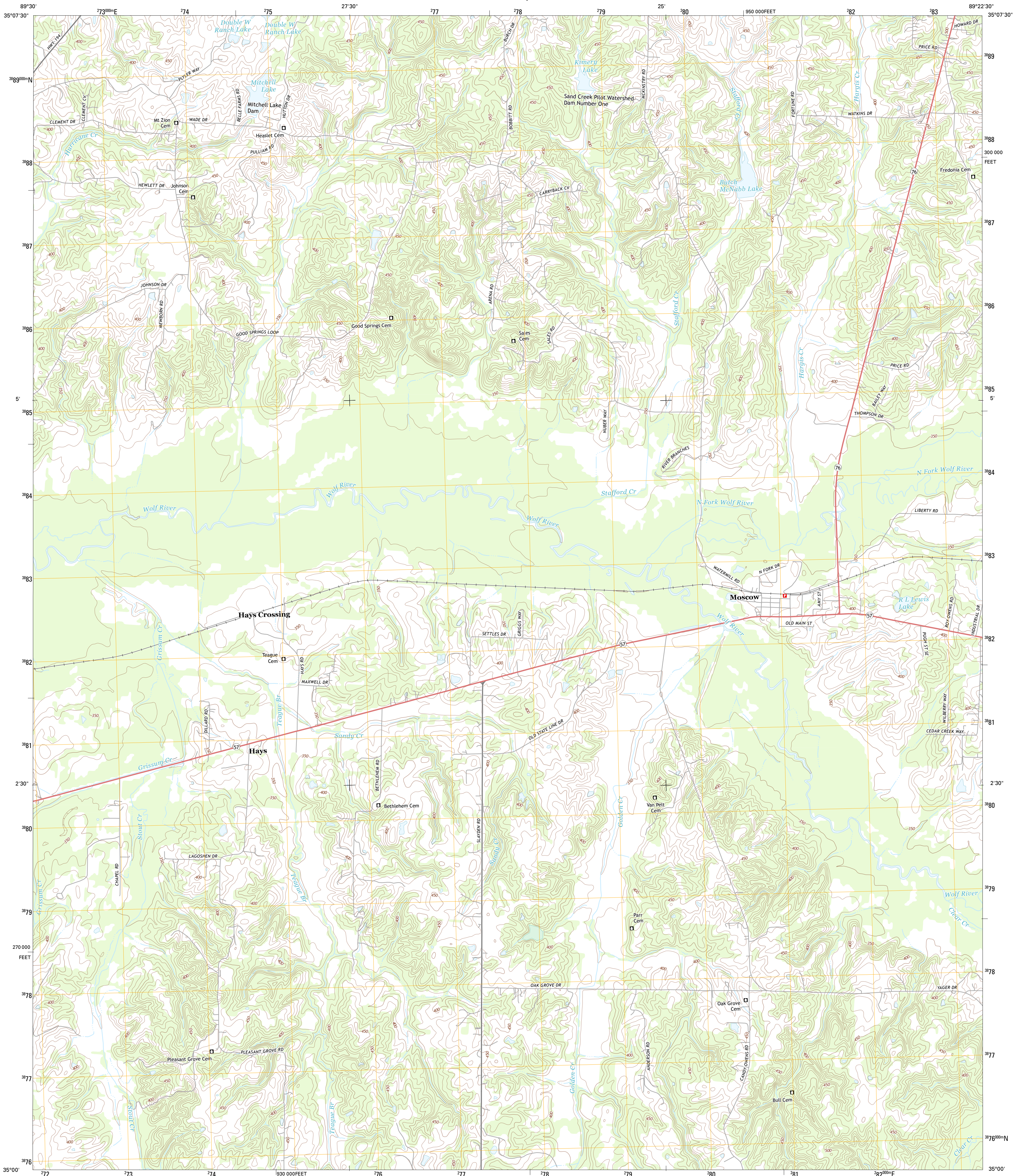




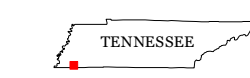
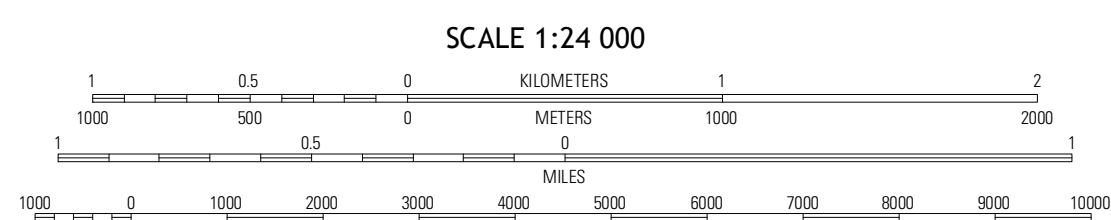
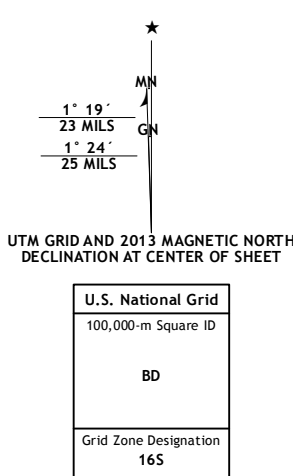
U.S. DEPARTMENT OF THE INTERIOR
U. S. GEOLOGICAL SURVEY



MOSCOW QUADRANGLE
TENNESSEE-FAYETTE CO.
7.5-MINUTE SERIES

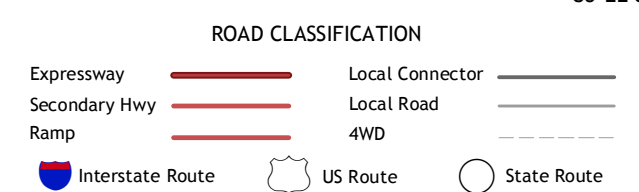


Produced by the United States Geological Survey
North American Datum of 1983 (NAD83)
World Geodetic System of 1984 (WGS84) Projection and
1 000-meter grid: Universal Transverse Mercator, Zone 16S
10 000-foot ticks: Tennessee Coordinate System of 1983



QUADRANGLE LOCATION

Oakland	Macon	Somerville
Russville	Moscow	Moscow SE
Mount Pleasant	Shayden	Lamar



CONTOUR INTERVAL 10 FEET
NORTH AMERICAN VERTICAL DATUM OF 1988
This map was produced to conform with the
National Geospatial Program US Topo Product Standard, 2011.
A metadata file associated with this product is draft version 0.6.11

MOSCOW, TN
2013

ADJOINING 7.5 QUADRANGLES