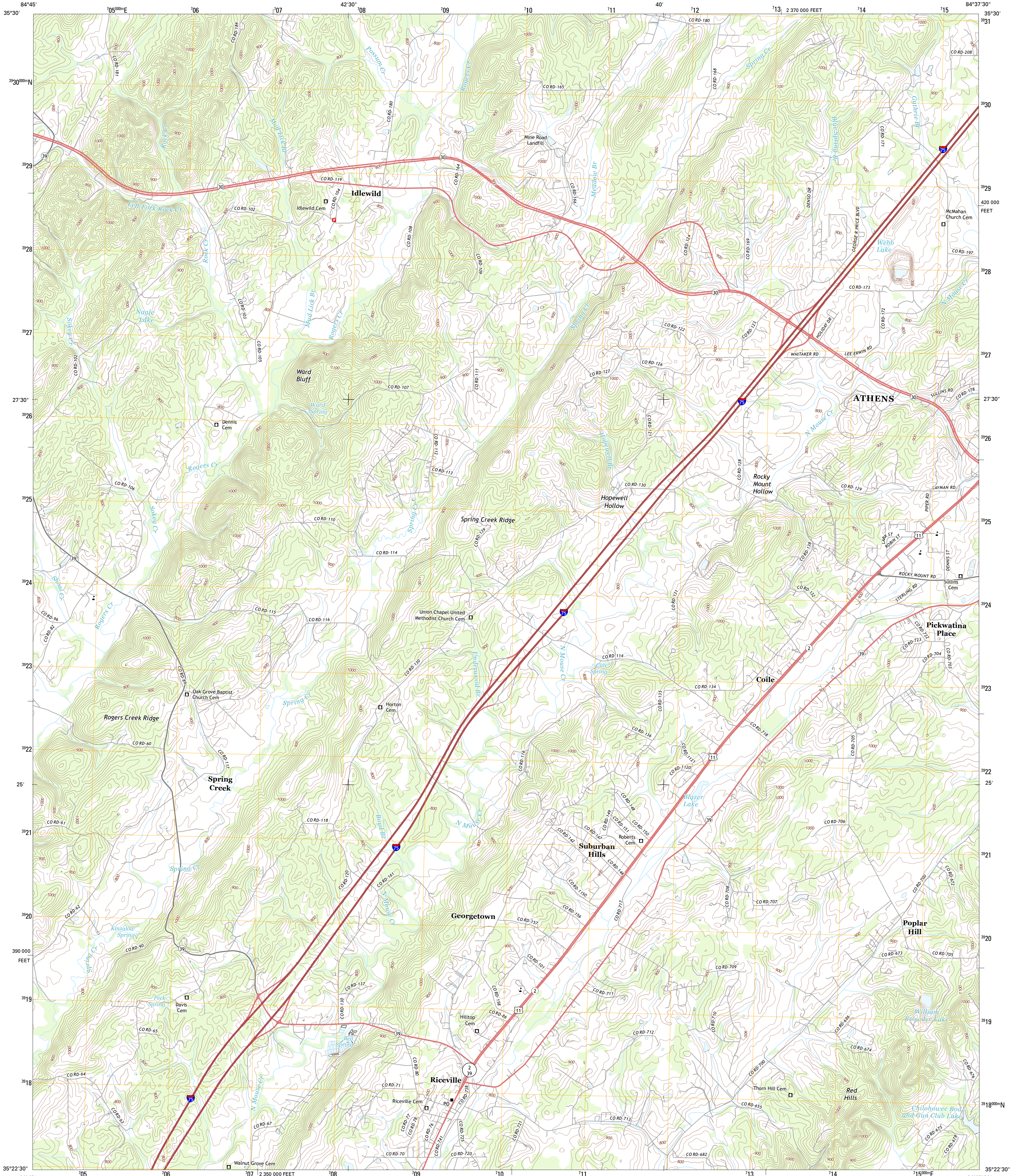




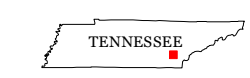
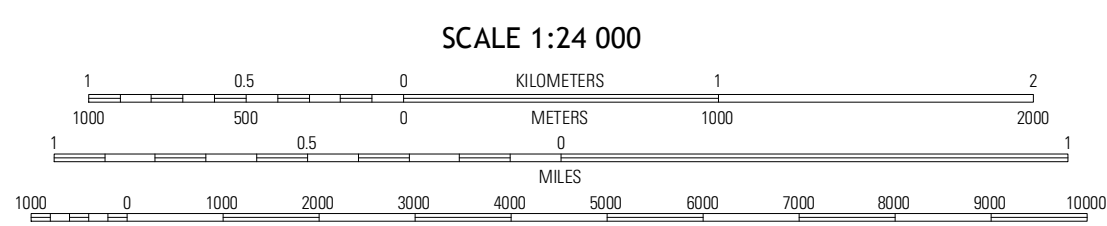
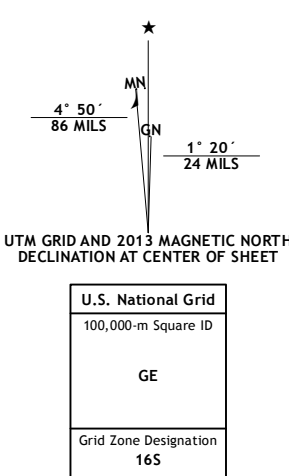
U.S. DEPARTMENT OF THE INTERIOR
U. S. GEOLOGICAL SURVEY



RICEVILLE QUADRANGLE
TENNESSEE-MCMINN CO.
7.5-MINUTE SERIES

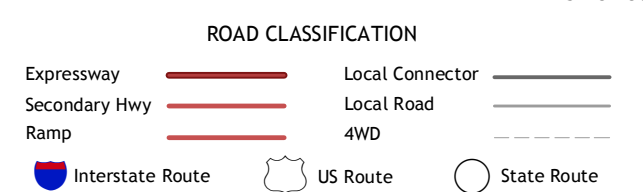


Produced by the United States Geological Survey
North American Datum of 1983 (NAD83)
World Geodetic System of 1984 (WGS84) Projection and
1 000-meter grid; Universal Transverse Mercator, Zone 16S
10 000-foot ticks; Tennessee Coordinate System of 1983



QUADRANGLE LOCATION

Decatur	Tranquillity	Niota
Goodfield	Riceville	Athens
Charlton	Calhoun	Etowah



RICEVILLE, TN
2013

ADJOINING 7.5 QUADRANGLES

This map was produced to conform with the National Geospatial Program US Topo Product Standard, 2011. A metadata file associated with this product is draft version 0.6.11