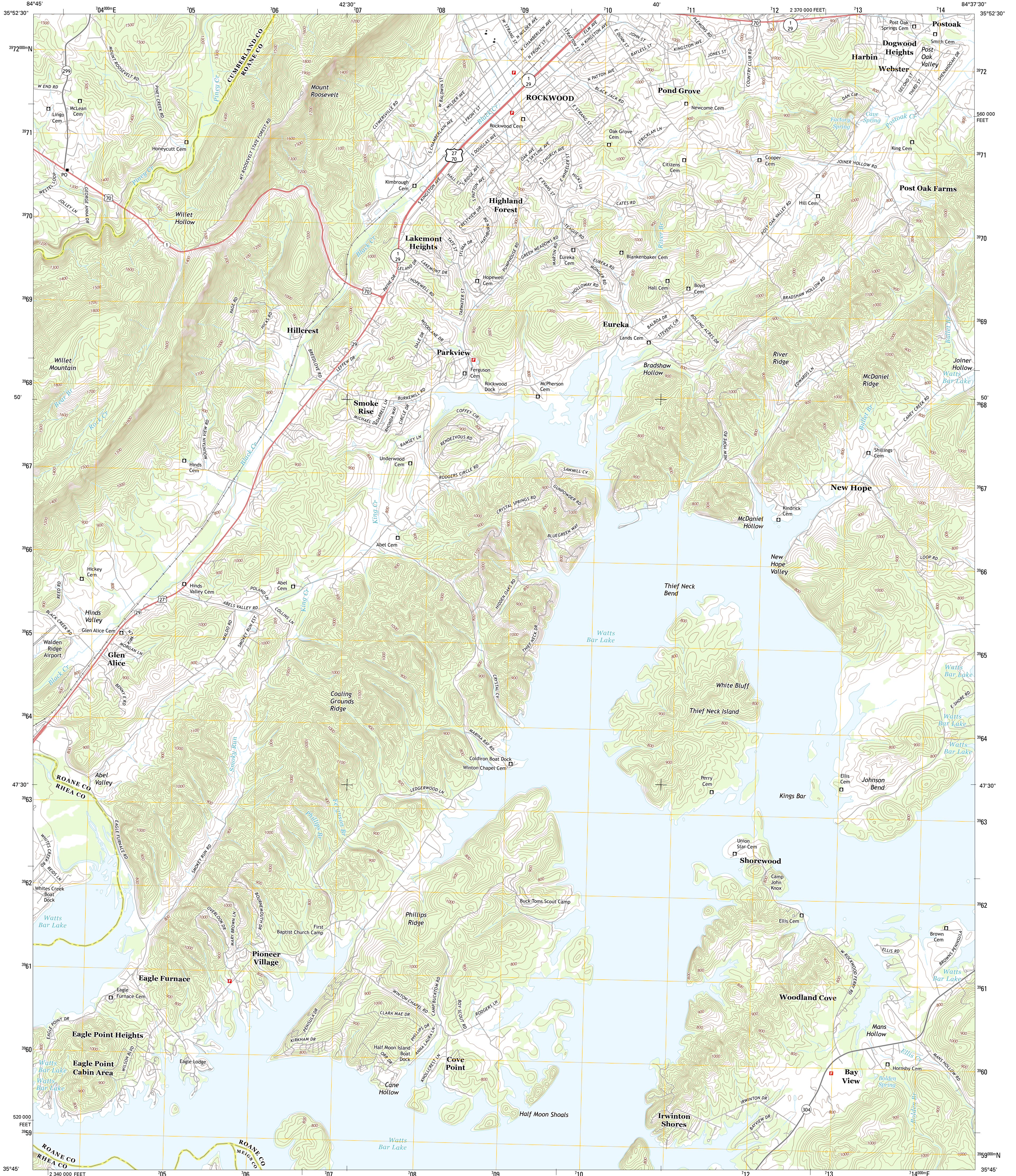




U.S. DEPARTMENT OF THE INTERIOR
U. S. GEOLOGICAL SURVEY



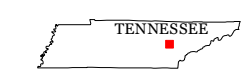
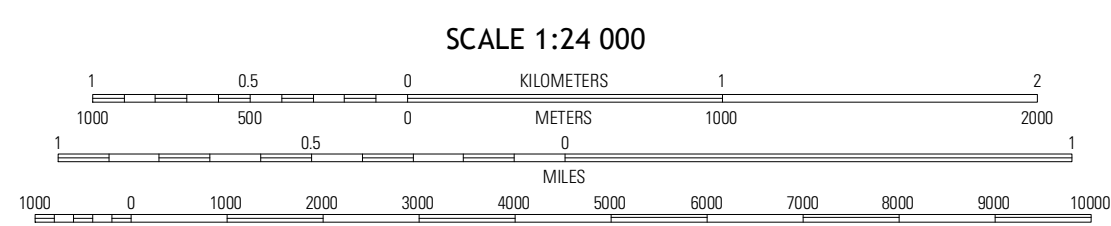
ROCKWOOD QUADRANGLE
TENNESSEE
7.5-MINUTE SERIES



Produced by the United States Geological Survey
North American Datum of 1983 (NAD83)
World Geodetic System of 1984 (WGS84). Projection and
1 000-meter grid: Universal Transverse Mercator, Zone 16S
10 000-foot ticks: Tennessee Coordinate System of 1983

UTM GRID AND 2013 MAGNETIC NORTH DECLINATION AT CENTER OF SHEET

U.S. National Grid
100,000-m Square ID
GE
Grid Zone Designation
16S



QUADRANGLE LOCATION

Onion	Cardiff	Harriman
Roddy	Rockwood	Bacon Gap
Spring City	Ten Mile	Pattie Gap

ROAD CLASSIFICATION

- Expressway
- Secondary Hwy
- Ramp
- Local Connector
- Local Road
- 4WD
- Interstate Route
- US Route
- State Route

Imagery: NAD83, May 2012
Roads: ©2006-2012 TomTom
Names: GNSS, 2012
Hydrography: National Hydrography Dataset, 2012
Contours: National Elevation Dataset, 2001
Boundaries: Census, IBWC, IBC, USGS, 1972-2012

CONTOUR INTERVAL 20 FEET
NORTH AMERICAN VERTICAL DATUM OF 1988

This map was produced to conform with the National Geospatial Program US Topo Product Standard, 2011. A metadata file associated with this product is draft version 0.6.11

ROCKWOOD, TN
2013

ADJOINING 7.5 QUADRANGLES