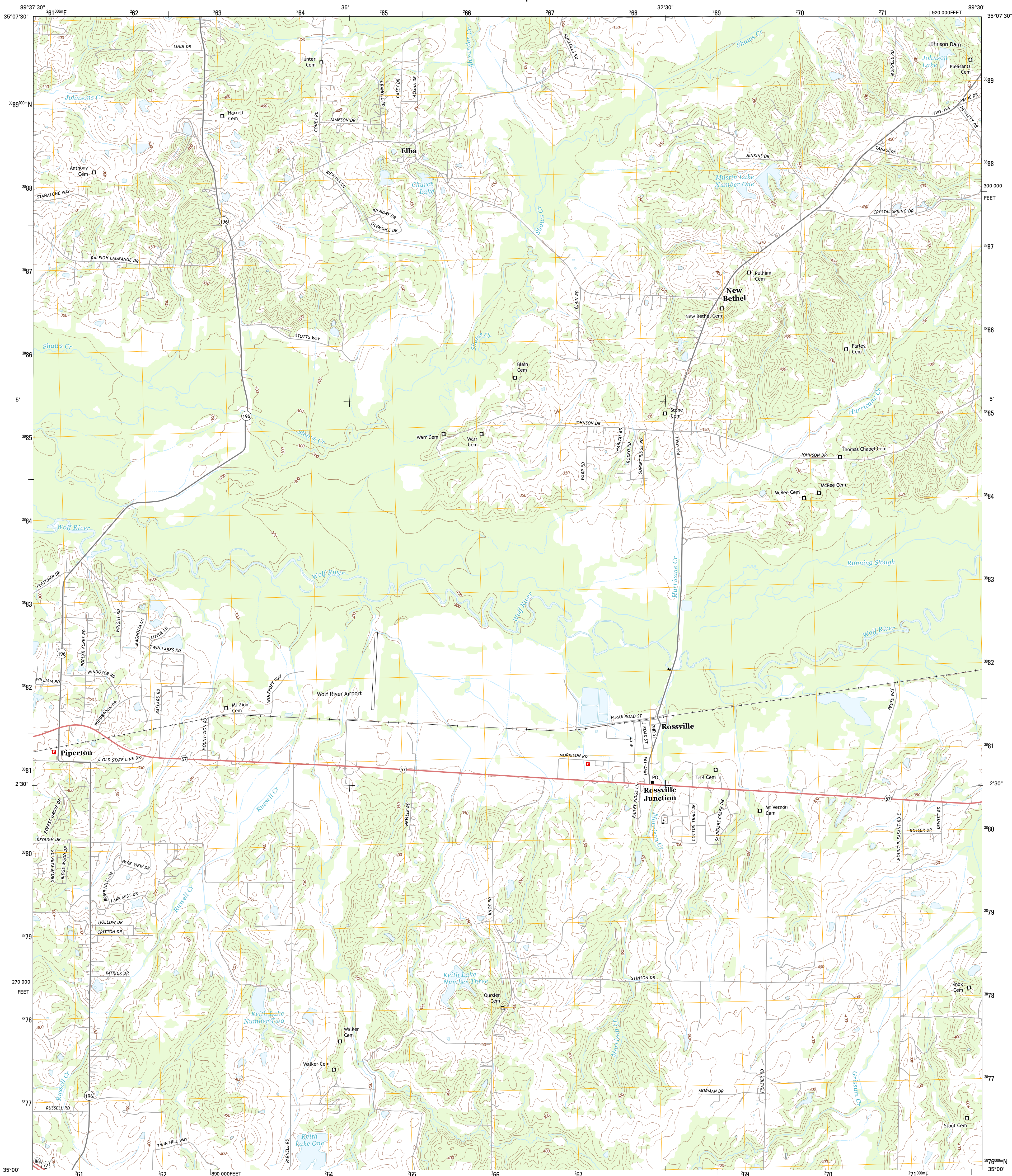




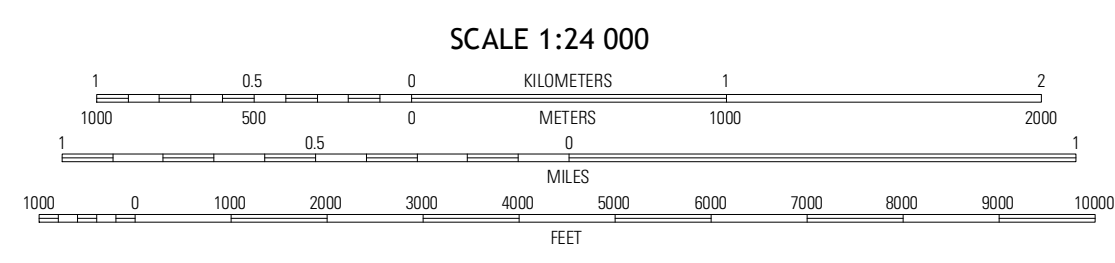
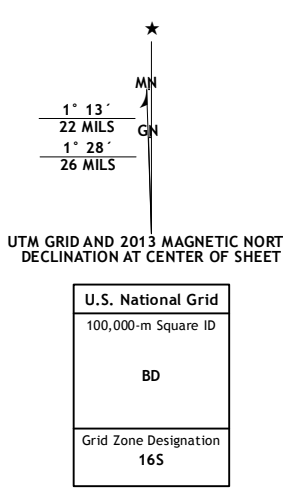
U.S. DEPARTMENT OF THE INTERIOR  
U. S. GEOLOGICAL SURVEY



ROSSVILLE QUADRANGLE  
TENNESSEE-FAYETTE CO.  
7.5-MINUTE SERIES



Produced by the United States Geological Survey  
North American Datum of 1983 (NAD83)  
World Geodetic System of 1984 (WGS84) Projection and  
1 000-meter grid; Universal Transverse Mercator, Zone 16S  
10 000-foot ticks; Tennessee Coordinate System of 1983



- ROAD CLASSIFICATION**
- Expressway
  - Secondary Hwy
  - Ramp
  - Interstate Route
  - Local Connector
  - Local Road
  - 4WD
  - US Route
  - State Route

QUADRANGLE LOCATION

Exds	Oakland	Macon
Collierville	Rossville	Moscow
Byhalia NW	Mount Pleasant	Slayden

ROSSVILLE, TN  
2013

CONTOUR INTERVAL 10 FEET  
NORTH AMERICAN VERTICAL DATUM OF 1988  
This map was produced to conform with the  
National Geospatial Program US Topo Product Standard, 2011.  
A metadata file associated with this product is draft version 0.6.11

ADJOINING 7.5 QUADRANGLES