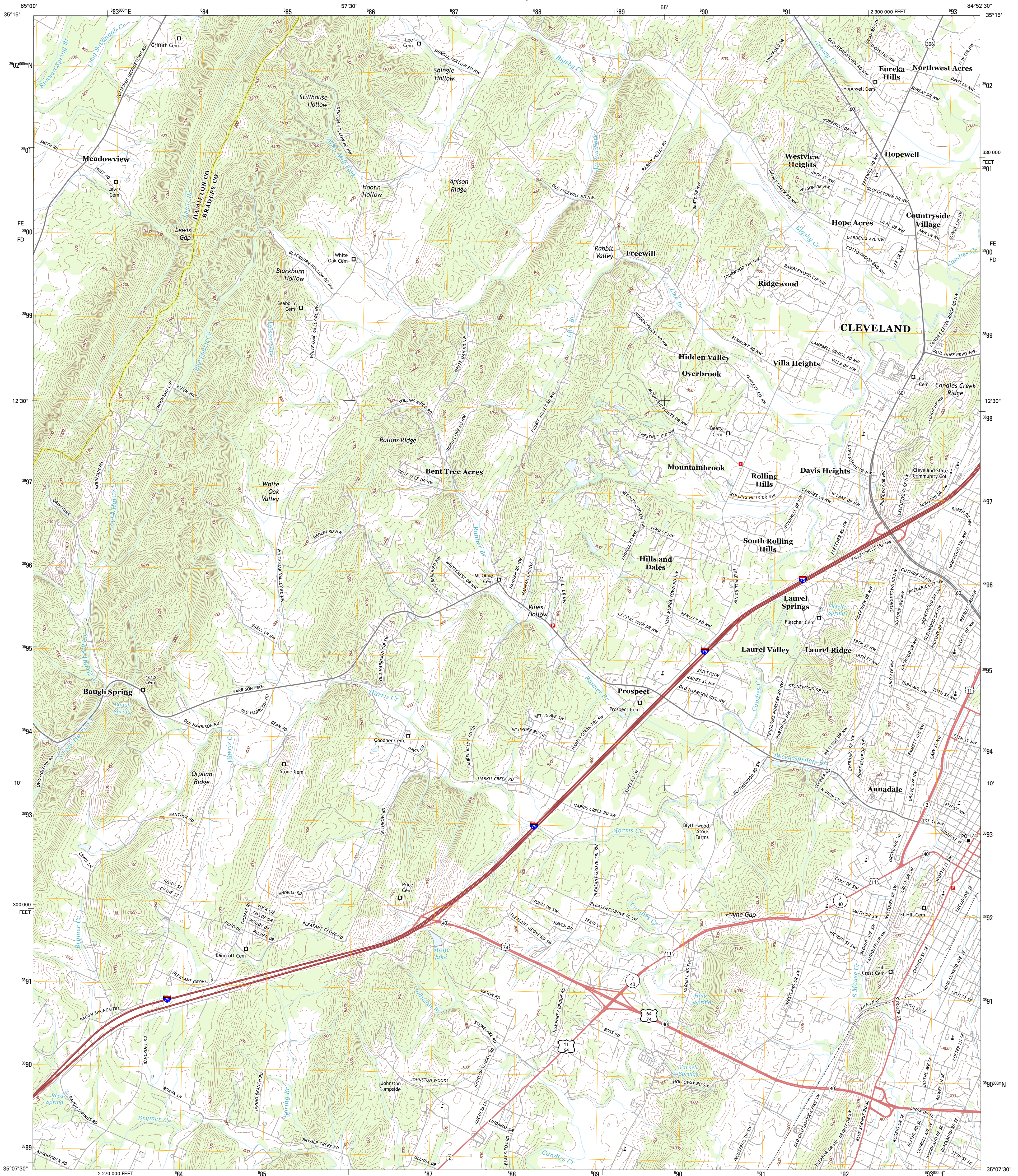




U.S. DEPARTMENT OF THE INTERIOR
U. S. GEOLOGICAL SURVEY



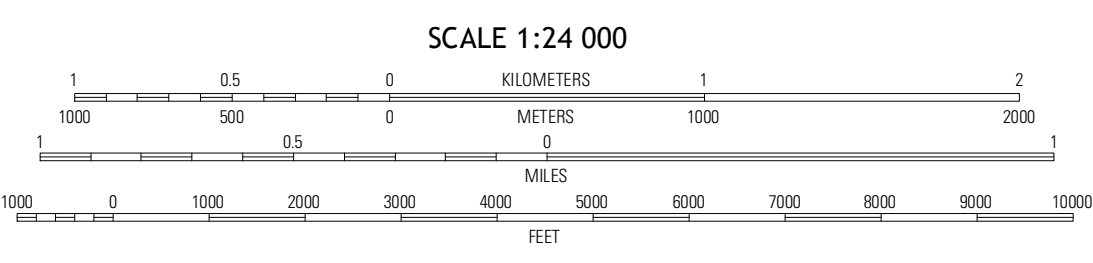
SOUTH CLEVELAND QUADRANGLE
TENNESSEE
7.5-MINUTE SERIES



Produced by the United States Geological Survey
North American Datum of 1983 (NAD83)
World Geodetic System of 1984 (WGS84). Projection and
1 000-meter grid: Universal Transverse Mercator, Zone 16S
10 000-foot ticks: Tennessee Coordinate System of 1983

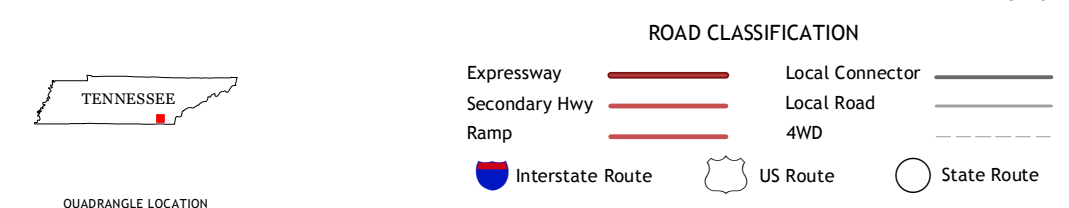
UTM GRID AND 2011 MAGNETIC NORTH
DECLINATION AT CENTER OF SHEET

| | |
|---------------------------|---------------------|
| U.S. National Grid | 100,000-m Square ID |
| FE | FD |
| Grid Zone Designation 16S | |



CONTOUR INTERVAL 20 FEET
NORTH AMERICAN VERTICAL DATUM OF 1988

This map was produced to conform with the
National Geospatial Program US Topo Product Standard, 2011.
A metadata file associated with this product is draft version 0.6.11



QUADRANGLE LOCATION

| | | |
|-------------------|-----------------|----------------|
| Grasshopper Creek | Birchwood | Charleston |
| Snow Hill | South Cleveland | East Cleveland |
| Ooltwah | McDonald | Pelzer |

SOUTH CLEVELAND, TN
2013

ADJOINING 7.5 QUADRANGLES