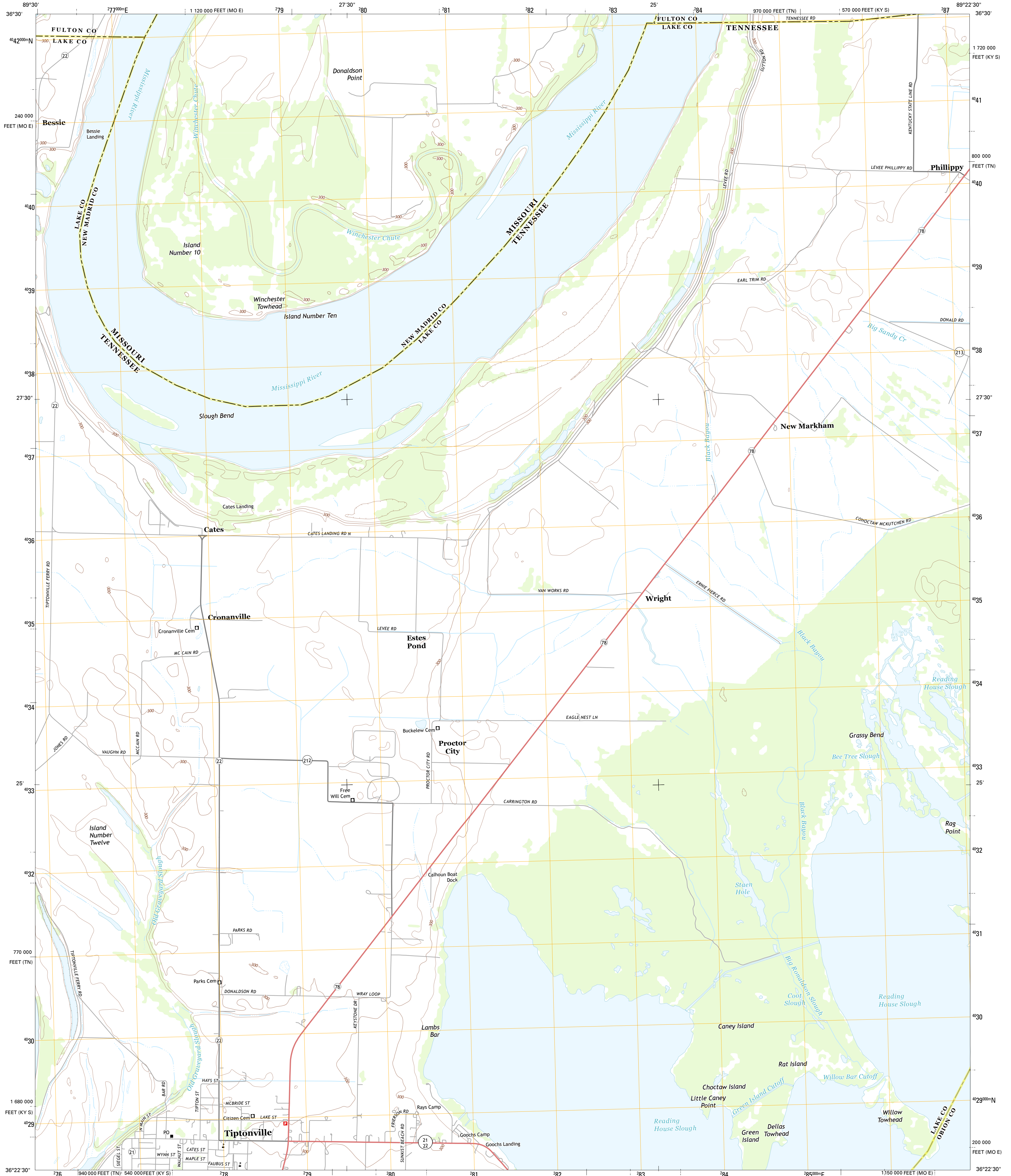




U.S. DEPARTMENT OF THE INTERIOR  
U. S. GEOLOGICAL SURVEY

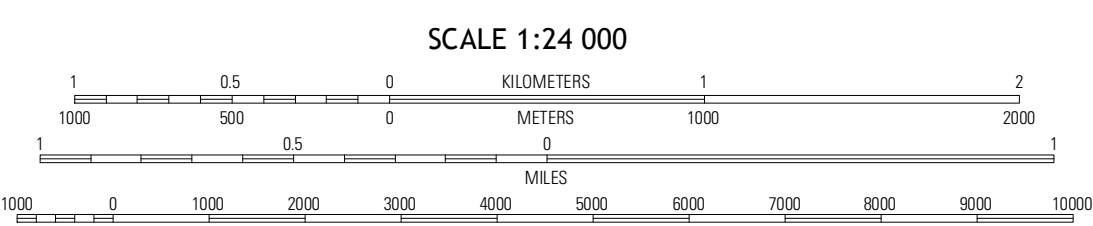
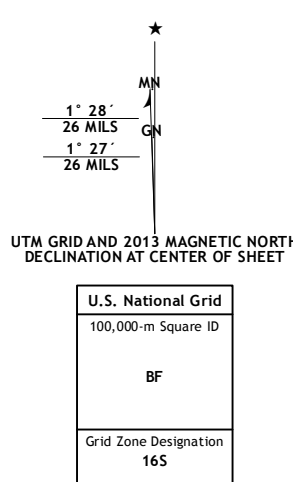


TIPTONVILLE QUADRANGLE  
TENNESSE-MISSOURI-KENTUCKY  
7.5-MINUTE SERIES



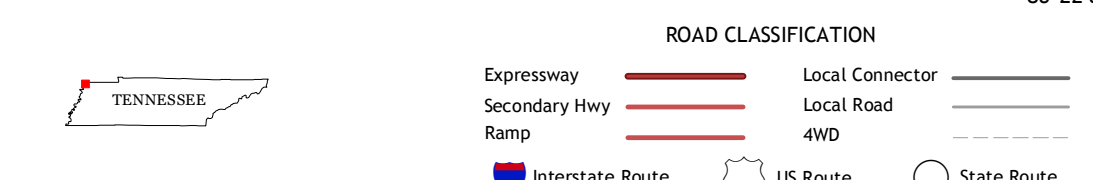
Produced by the United States Geological Survey  
North American Datum of 1983 (NAD83)  
World Geodetic System of 1984 (WGS84)  
1:000-meter grid: Universal Transverse Mercator, Zone 16S  
10 000-foot ticks: Tennessee Coordinate System of 1983,  
Missouri Coordinate System of 1983 (east zone), Kentucky  
Coordinate System of 1983 (south zone)

Imagery: N/AIP, June 2012  
Roads: ©2006-2012 TomTom  
Names: GNIS, 2012  
Hydrography: National Hydrography Dataset, 2012  
Contours: National Elevation Dataset, 2008  
Boundaries: Census, IBWC, IBG, USGS, 1972-2012



CONTOUR INTERVAL 10 FEET  
NORTH AMERICAN VERTICAL DATUM OF 1988

This map was produced to conform with the National Geospatial Program US Topo Product Standard, 2011. A metadata file associated with this product is draft version 0.6.11



QUADRANGLE LOCATION

New Madrid	Hubbard Lake	Bondurant
Point Pleasant	Tiptonville	Samburg
Mooring	Ridgely	Hornbeak

ADJOINING 7.5 QUADRANGLES

TIPTONVILLE, TN-MO-KY  
2013