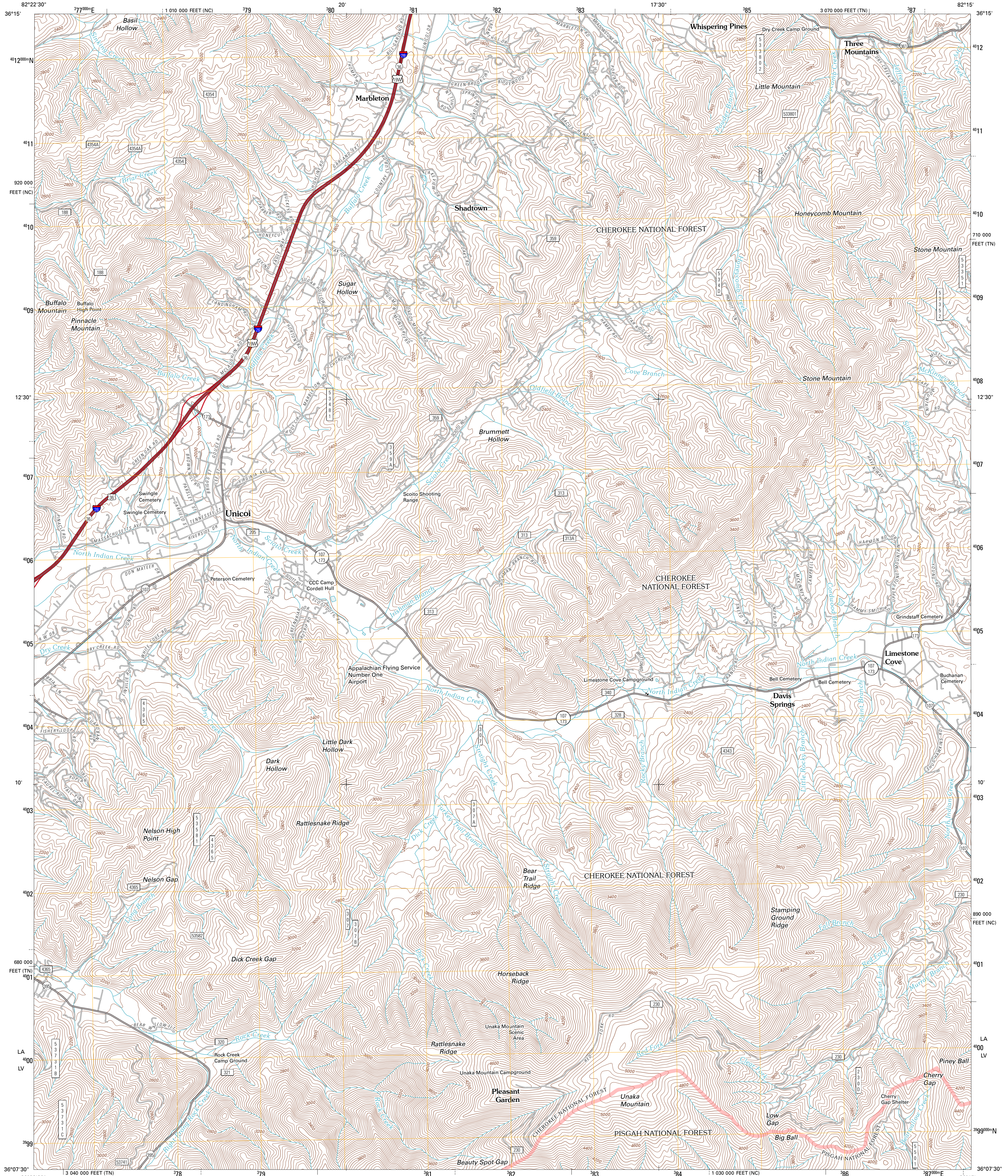




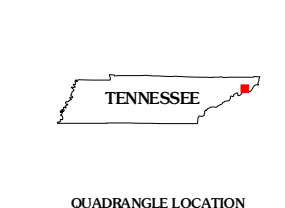
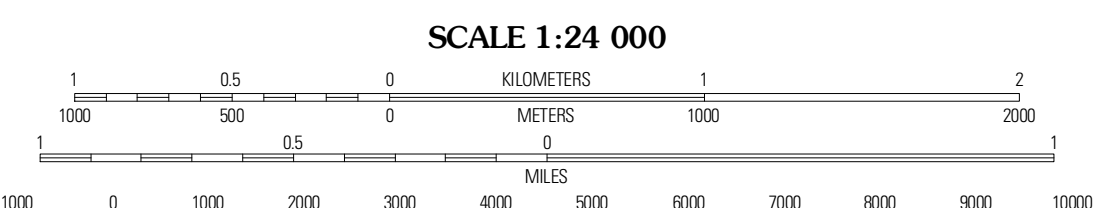
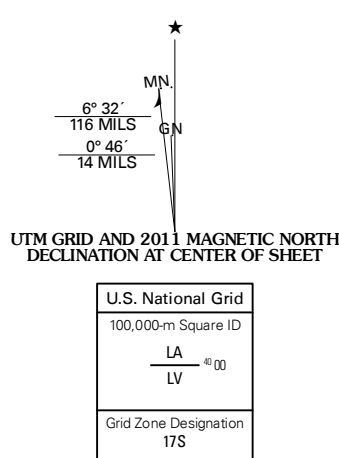
U.S. DEPARTMENT OF THE INTERIOR
U. S. GEOLOGICAL SURVEY



UNICOI QUADRANGLE
TENNESSEE-NORTH CAROLINA
7.5-MINUTE SERIES



Produced by the United States Geological Survey
North American Datum of 1983 (NAD83)
World Geodetic System of 1984 (WGS84). Projection and
1 000-meter grid: Universal Transverse Mercator, Zone 17S
10 000-foot ticks: Tennessee Coordinate System of 1983,
North Carolina Coordinate System of 1983



ROAD CLASSIFICATION

Interstate Route
US Route
Ramp
State Route
Local Road
4WD
FS Primary Route
FS Passenger Route
FS High Clearance Route

QUADRANGLE LOCATION

Jonesborough	Johnson City	Elizabethton
Erwin	Unicoi	Iron Mountain Gap
Chestnut	Hurdale	Bakersville

Check with local Forest Service unit for current travel conditions and restrictions.

UNICOI, TN-NC
2011

CONTOUR INTERVAL 40 FEET
NORTH AMERICAN VERTICAL DATUM OF 1988

This map was produced to conform with version 0.5.10 of the draft USGS Standards for 7.5-Minute Quadrangle Maps. A metadata file associated with this product is draft version 0.5.12

Imagery: NADP, April 2010
Roads: ©2006-2010 Tele Atlas
Roads within US Forest Service Lands: FS Topo Data with limited Forest Service updates, 2009
Names: ©2010 GNS, 2010
Hydrography: National Hydrography Dataset, 2010
Contours: National Elevation Dataset, 2001