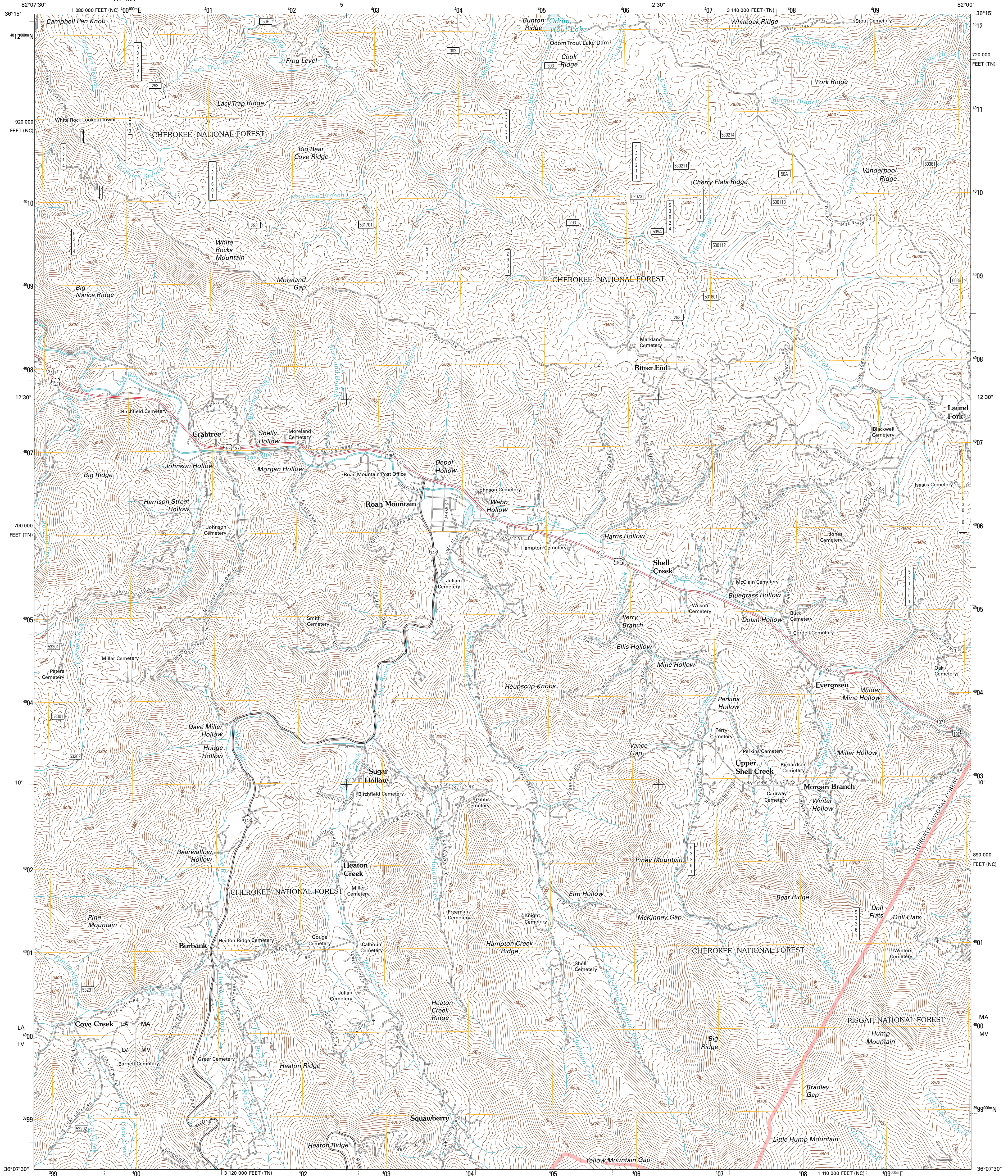




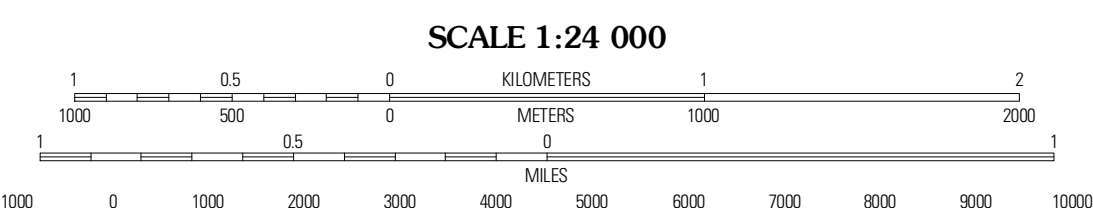
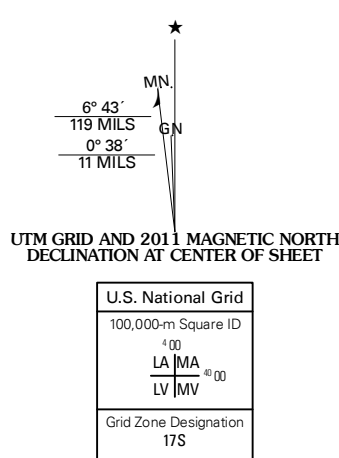
U.S. DEPARTMENT OF THE INTERIOR
U. S. GEOLOGICAL SURVEY



WHITE ROCKS MOUNTAIN QUADRANGLE
TENNESSEE-NORTH CAROLINA
7.5-MINUTE SERIES



Produced by the United States Geological Survey
North American Datum of 1983 (NAD83)
World Geodetic System of 1984 (WGS84). Projection and
1 000-meter grid: Universal Transverse Mercator, Zone 17S
10 000-foot ticks: Tennessee Coordinate System of 1983,
North Carolina Coordinate System of 1983



ROAD CLASSIFICATION

- Interstate Route
- US Route
- Ramp
- State Route
- Local Road
- 4WD
- FS Route
- FS Passenger Route
- FS High Clearance Route

Check with local Forest Service unit for current travel conditions and restrictions.

QUADRANGLE LOCATION

Elizabeth	Watauga Dam	Elk Mills
Iron Mountain Gap	White Rock Mountain	Elk Park
Bakersville	Carvers Gap	Newland

Imagery: NIP, April 2010
Roads: ©2006-2010 Tele Atlas
Roads within US Forest Service Lands: FSTopo Data with limited Forest Service updates, 2009
Names: ©2010
Hydrography: National Hydrography Dataset, 2010
Contours: National Elevation Dataset, 2008

CONTOUR INTERVAL 40 FEET
NORTH AMERICAN VERTICAL DATUM OF 1988
This map was produced to conform with version 0.5.10 of the draft USGS Standards for 7.5-Minute Quadrangle Maps. A metadata file associated with this product is draft version 0.5.12

WHITE ROCKS MOUNTAIN, TN-NC
2011

ADJOINING 7.5 QUADRANGLES