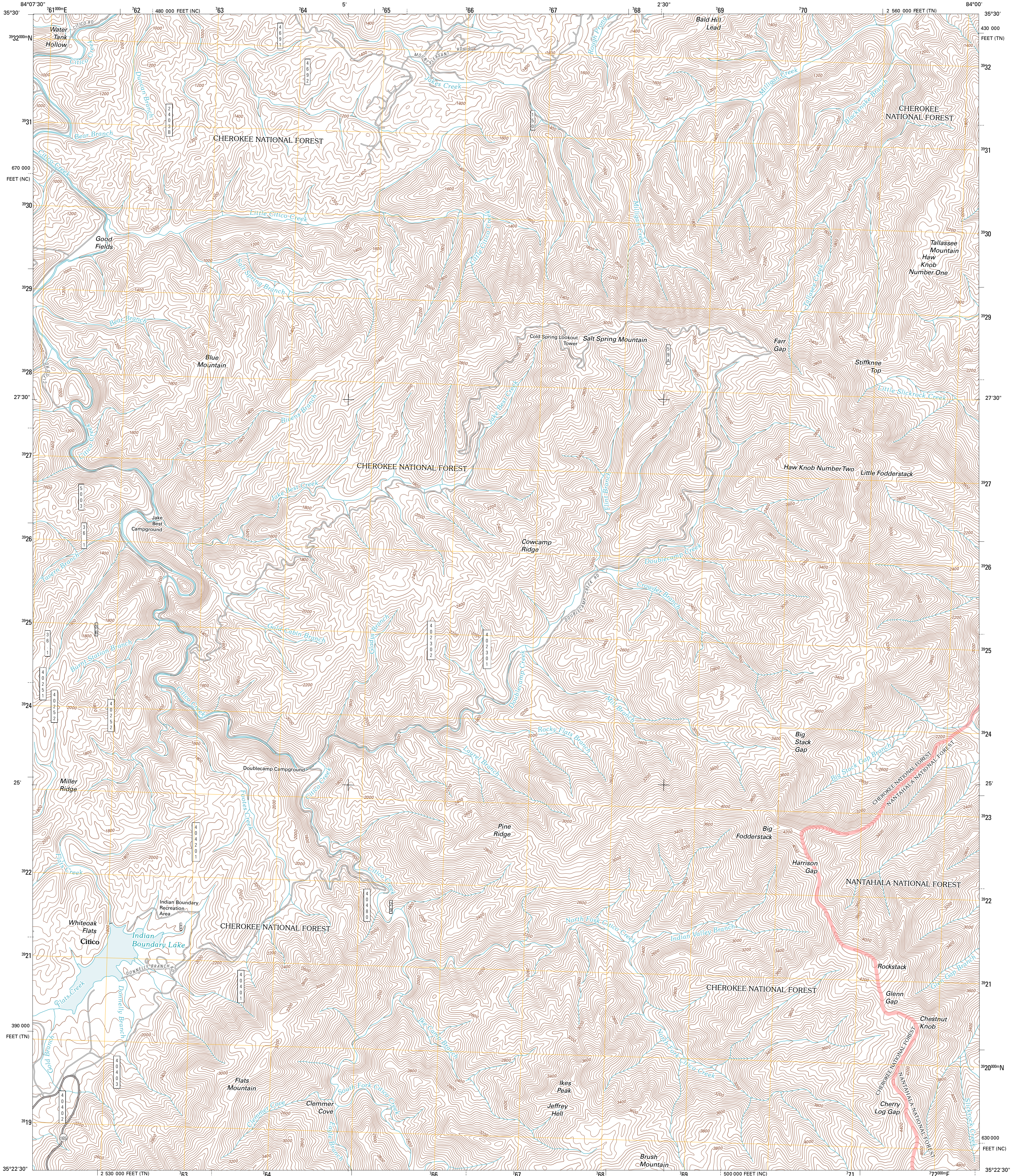




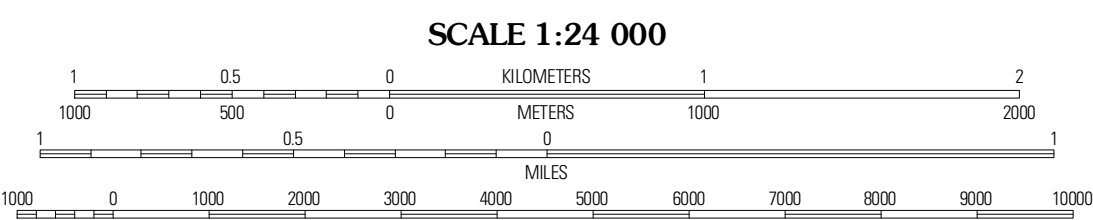
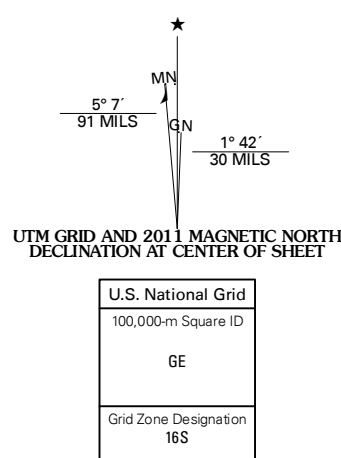
U.S. DEPARTMENT OF THE INTERIOR
U. S. GEOLOGICAL SURVEY



WHITEOAK FLATS QUADRANGLE
TENNESSEE-NORTH CAROLINA
7.5-MINUTE SERIES



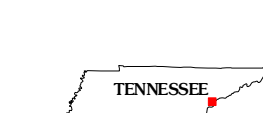
Produced by the United States Geological Survey
North American Datum of 1983 (NAD83)
World Geodetic System of 1984 (WGS84) Projection and
1 000-meter grid. Universal Transverse Mercator, Zone 16S
10 000-foot ticks: Tennessee Coordinate System of 1983,
North Carolina Coordinate System of 1983



CONTOUR INTERVAL 40 FEET
NORTH AMERICAN VERTICAL DATUM OF 1988

This map was produced to conform with version 0.5.10 of the
draft USGS Standards for 7.5-Minute Quadrangle Maps.
A metadata file associated with this product is draft version 0.5.12

Imagery: NADIP, April 2010
Roads: ©2006-2010 Tele Atlas
Roads within US Forest Service Lands: FSTopo Data
with limited Forest Service updates, 2009
Names: GNS, 2010
Hydrography: National Hydrography Dataset, 2010
Contours: National Elevation Dataset, 2008



QUADRANGLE LOCATION

Vonore	Talasee	Calderwood
Rafter	Whiteoak Flats	Tapoco
Bald River Falls	Big Junction	Sawtooth Creek

ROAD CLASSIFICATION

Interstate Route	State Route
US Route	Local Road
Ramp	4WD
FS Primary Route	US Route
	FS Passenger Route
	FS High Clearance Route

Check with local Forest Service unit for current travel conditions and restrictions.

WHITEOAK FLATS, TN-NC
2011

ADJOINING 7.5 QUADRANGLES