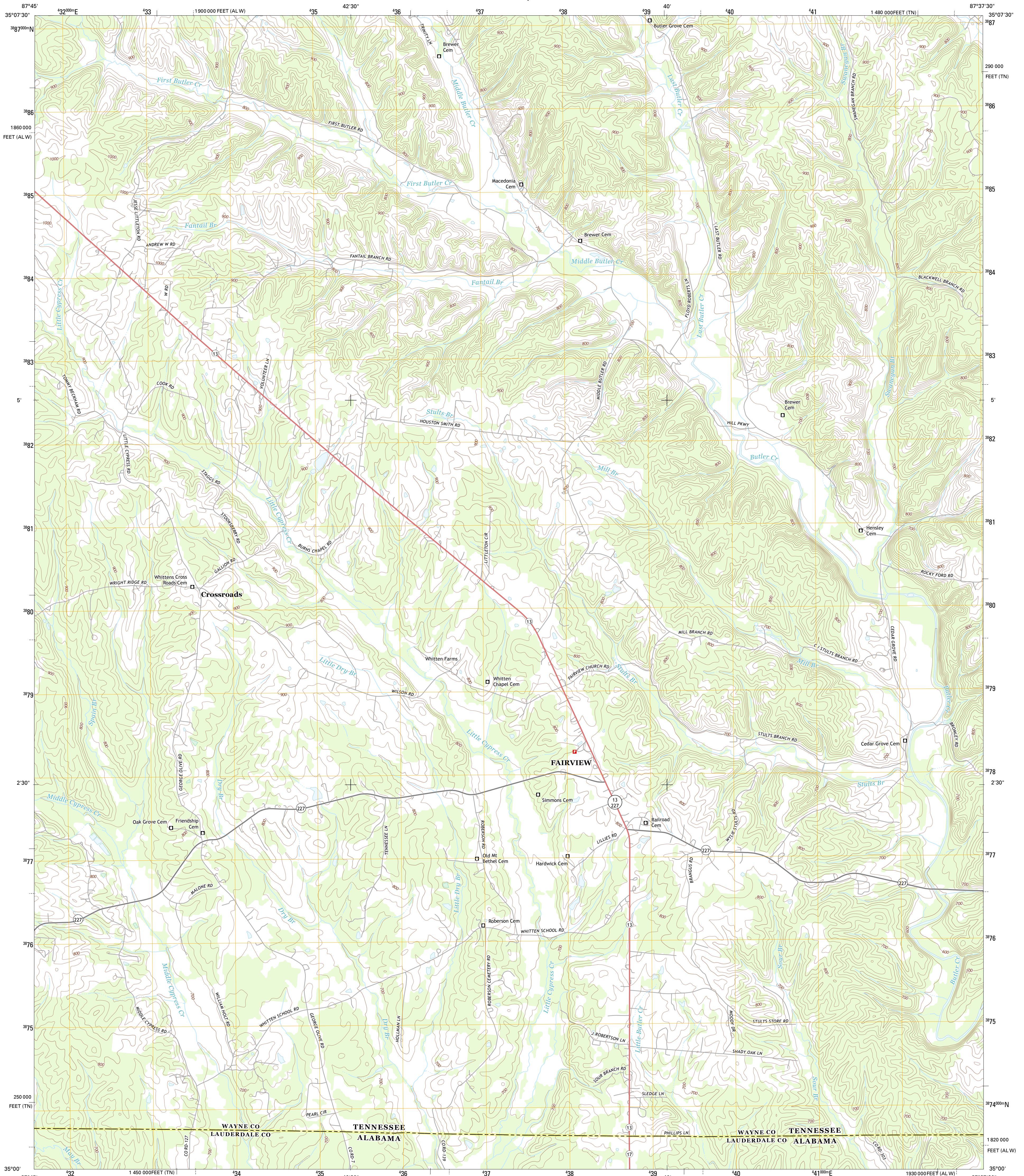




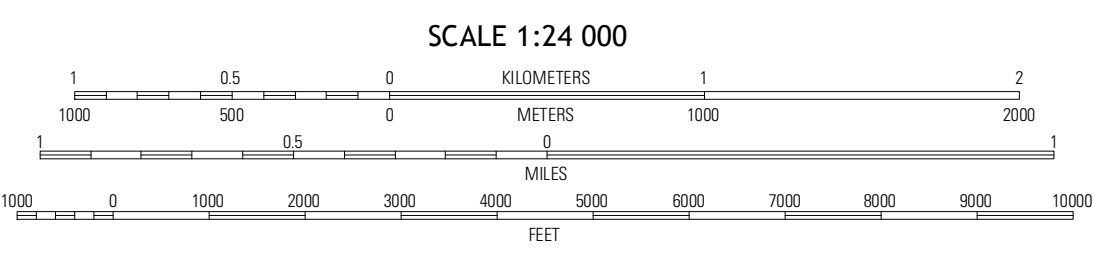
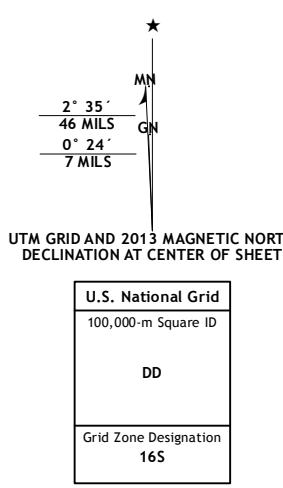
U.S. DEPARTMENT OF THE INTERIOR
U. S. GEOLOGICAL SURVEY



WHITTEN QUADRANGLE
TENNESSEE-ALABAMA
7.5-MINUTE SERIES

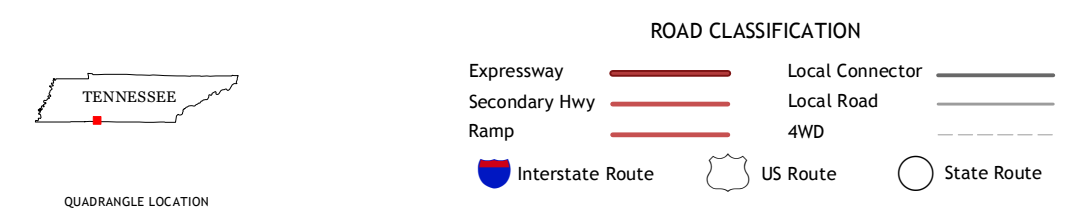


Produced by the United States Geological Survey
North American Datum of 1983 (NAD83)
World Geodetic System of 1984 (WGS84) Projection and
1 000-meter grid; Universal Transverse Mercator, Zone 16S
10 000-foot ticks; Tennessee Coordinate System of 1983,
Alabama Coordinate System of 1983 (west zone)



CONTOUR INTERVAL 20 FEET
NORTH AMERICAN VERTICAL DATUM OF 1988

This map was produced to conform with the
National Geospatial Program US Topo Product Standard, 2011.
A metadata file associated with this product is draft version 0.6.11



QUADRANGLE LOCATION

Three Churches	Collinswood	Westpoint
Cypress Inn	Whitten	Saint Joseph
Threet	Blackburn	Fruitton

ADJOINING 7.5 QUADRANGLES

WHITTEN, TN-AL
2013