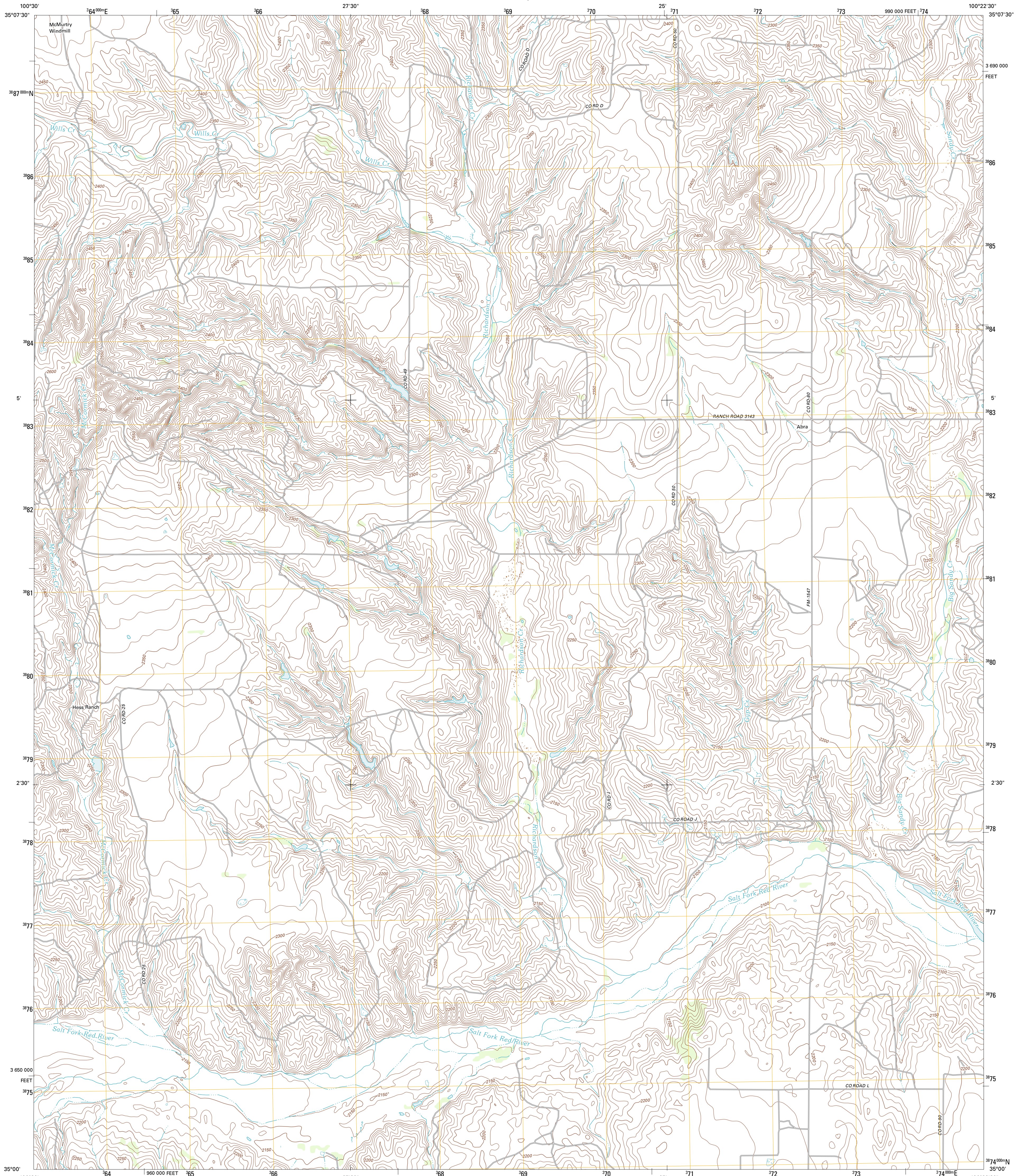




U.S. DEPARTMENT OF THE INTERIOR  
U. S. GEOLOGICAL SURVEY

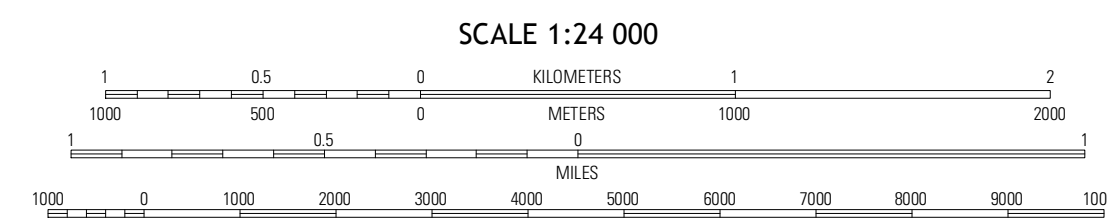
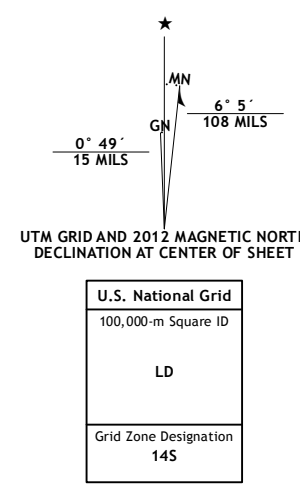


ABRA QUADRANGLE  
TEXAS-COLLINGSWORTH CO.  
7.5-MINUTE SERIES



Produced by the United States Geological Survey  
North American Datum of 1983 (NAD83)  
World Geodetic System of 1984 (WGS84). Projection and  
1 000-meter grid: Universal Transverse Mercator, Zone 14S  
10 000 foot ticks: Texas Coordinate System of 1983 (north zone)

Imagery.....NAIP, August 2010  
Roads.....©2006-2012 TomTom  
Names.....GNIS, 2012  
Hydrography.....National Hydrography Dataset, 2010  
Contours.....National Elevation Dataset, 2002  
Boundaries.....Census, IBWC, IBC, USGS, 1972 - 2012



SCALE 1:24 000  
CONTOUR INTERVAL 10 FEET  
NORTH AMERICAN VERTICAL DATUM OF 1988

This map was produced to conform with the  
National Geospatial Program US Topo Product Standard, 2011.  
A metadata file associated with this product is draft version 0.6.7



QUADRANGLE LOCATION

McLean	Ramsdell	Shamrock West
Spears Lake	Abra	Dosier
McKnight	Quail	Rolla NE

ROAD CLASSIFICATION  
Interstate Route (thick red line)  
US Route (red line)  
Ramp (red line with blue triangle)  
State Route (thin black line)  
Local Road (dashed black line)  
4WD (dashed black line with cross-ticks)  
US Route (circle with number)  
State Route (circle with number)

ABRA, TX  
2012