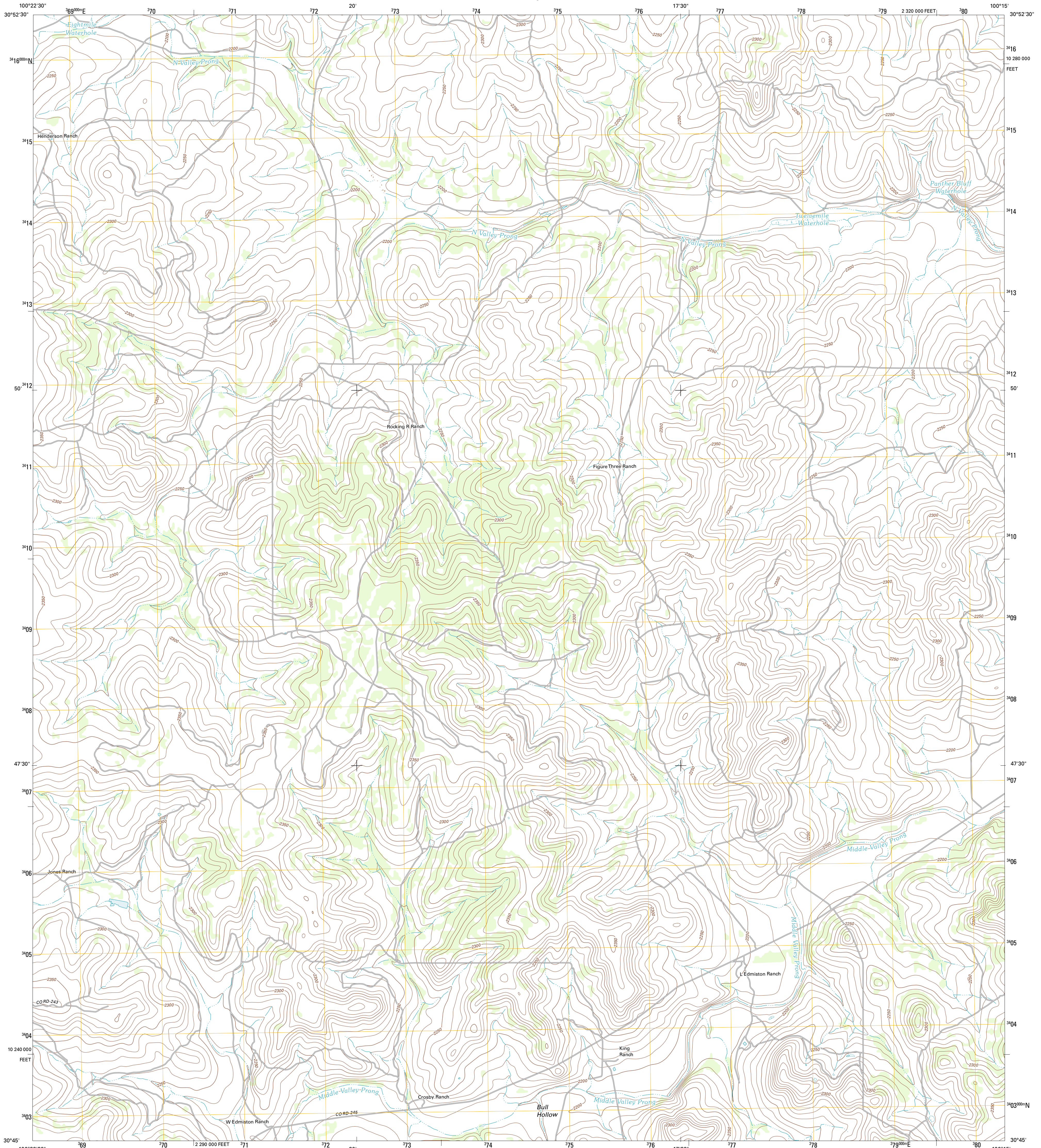




U.S. DEPARTMENT OF THE INTERIOR
U. S. GEOLOGICAL SURVEY

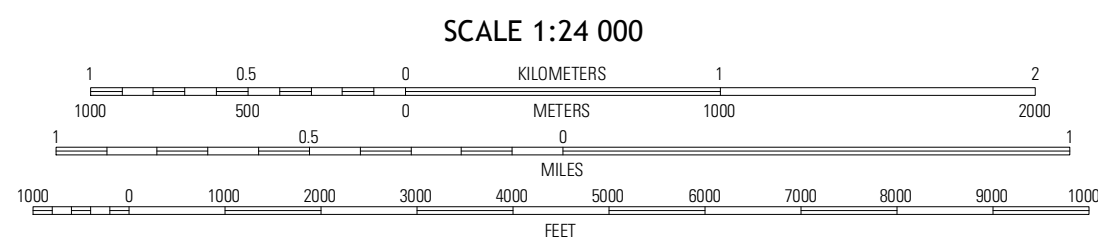
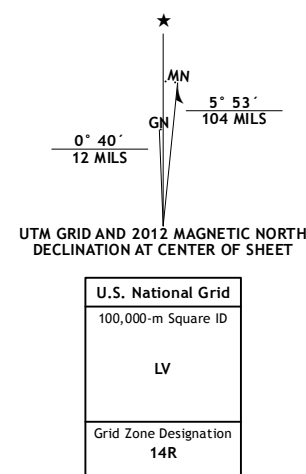


ADAMS SE QUADRANGLE
TEXAS-SCHLEICHER CO.
7.5-MINUTE SERIES



Produced by the United States Geological Survey
North American Datum of 1983 (NAD83)
World Geodetic System of 1984 (WGS84), Projection and
1 000-meter grid: Universal Transverse Mercator, Zone 14R
10 000-foot ticks: Texas Coordinate System of 1983 (central zone)

Imagery.....NAIP, May 2010 - August 2010
Roads.....©2006-2012 TomTom
Names.....©2006-2012 TomTom
Hydrography.....National Hydrography Dataset, 2010
Contours.....National Elevation Dataset, 2006
Boundaries.....Census, IBWC, IBC, USGS, 1972 - 2012



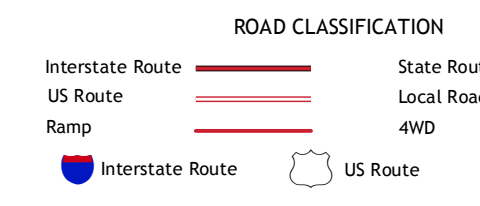
CONTOUR INTERVAL 10 FEET
NORTH AMERICAN VERTICAL DATUM OF 1988

This map was produced to conform with the
National Geospatial Program US Topo Product Standard, 2011.
A metadata file associated with this product is draft version 0.6.7



QUADRANGLE LOCATION

| | | |
|-----------------|--------------|------------------|
| Adams NW | Adams | Fort McKavett NW |
| Adams SW | Adams SE | Ovalina Ranch |
| Buffalo Well NW | Buffalo Well | Coal Mine Draw |



ADAMS SE, TX
2012

ADJOINING 7.5 QUADRANGLES