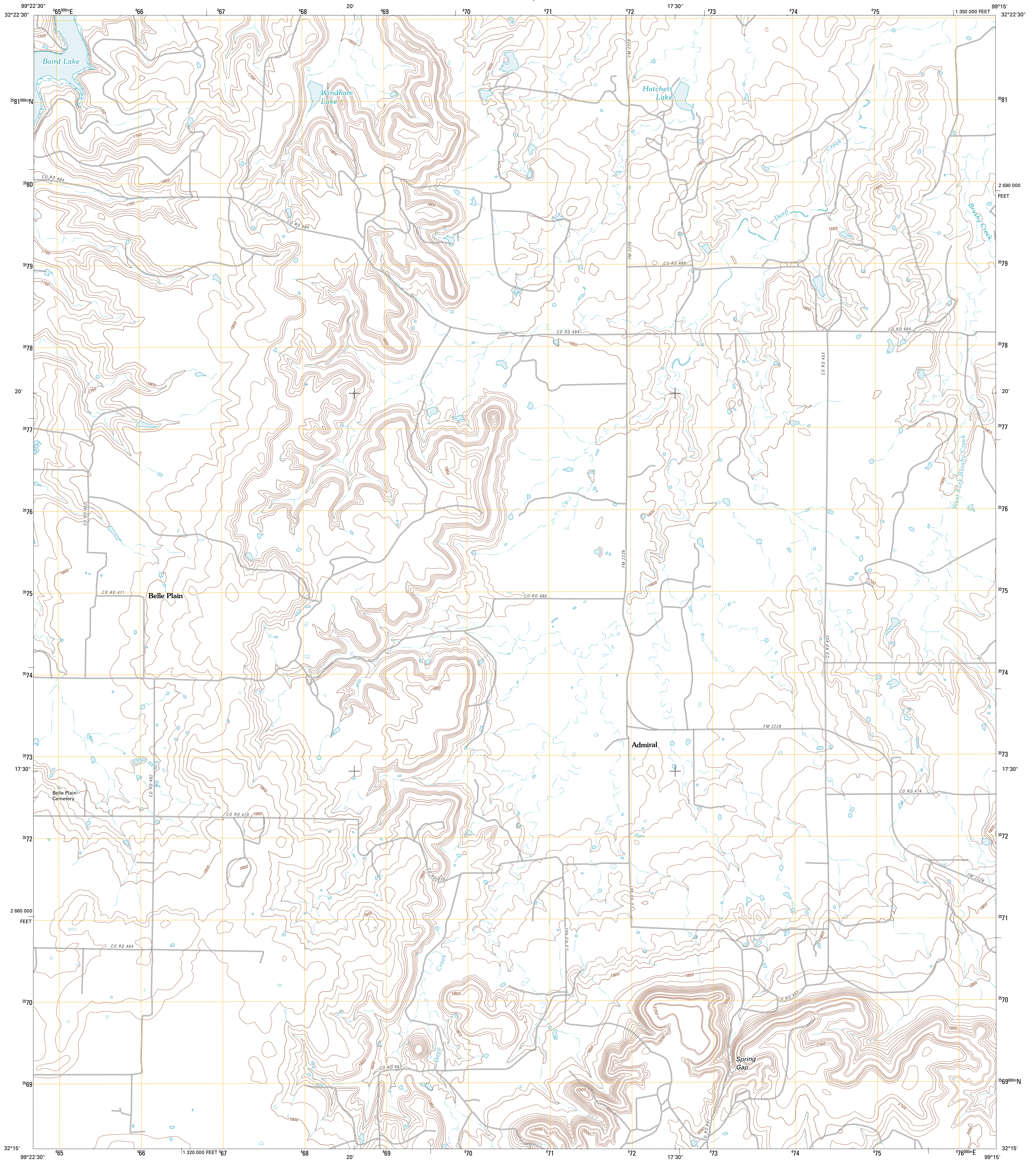




U.S. DEPARTMENT OF THE INTERIOR
U. S. GEOLOGICAL SURVEY

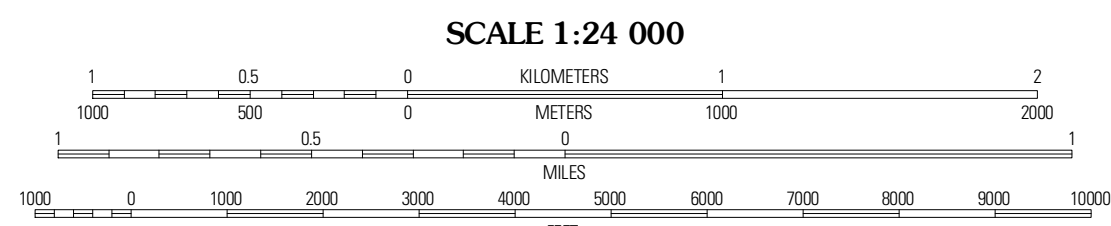
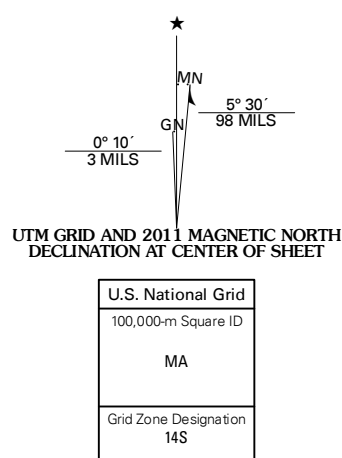


ADMIRAL QUADRANGLE
TEXAS
7.5-MINUTE SERIES



Produced by the United States Geological Survey
North American Datum of 1983 (NAD83)
World Geodetic System of 1984 (WGS84) Projection and
1 000-meter grid: Universal Transverse Mercator, Zone 14S
10 000-foot ticks: Texas Coordinate System of 1983 (north
central zone)

Imagery: NAIP, September 2008
Roads: ©2006-2010 Tele Atlas
Names: GNS, 2010
Hydrography: National Hydrography Dataset, 2008
Contours: National Elevation Dataset, 2005



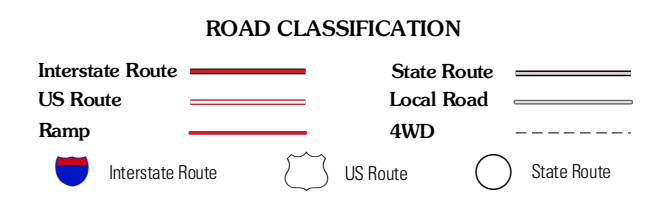
CONTOUR INTERVAL 10 FEET
NORTH AMERICAN VERTICAL DATUM OF 1988
This map was produced to conform with version 0.5.10 of the
draft USGS Standards for 7.5-Minute Quadrangle Maps.
A metadata file associated with this product is draft version 0.5.11



QUADRANGLE LOCATION

Baird	Joyell	Putnam North
Club Hollow	Admiral	Putnam South
Rowden NW	Rowden	Cross Plains North

ADJOINING 7.5 QUADRANGLES



ADMIRAL, TX
2011