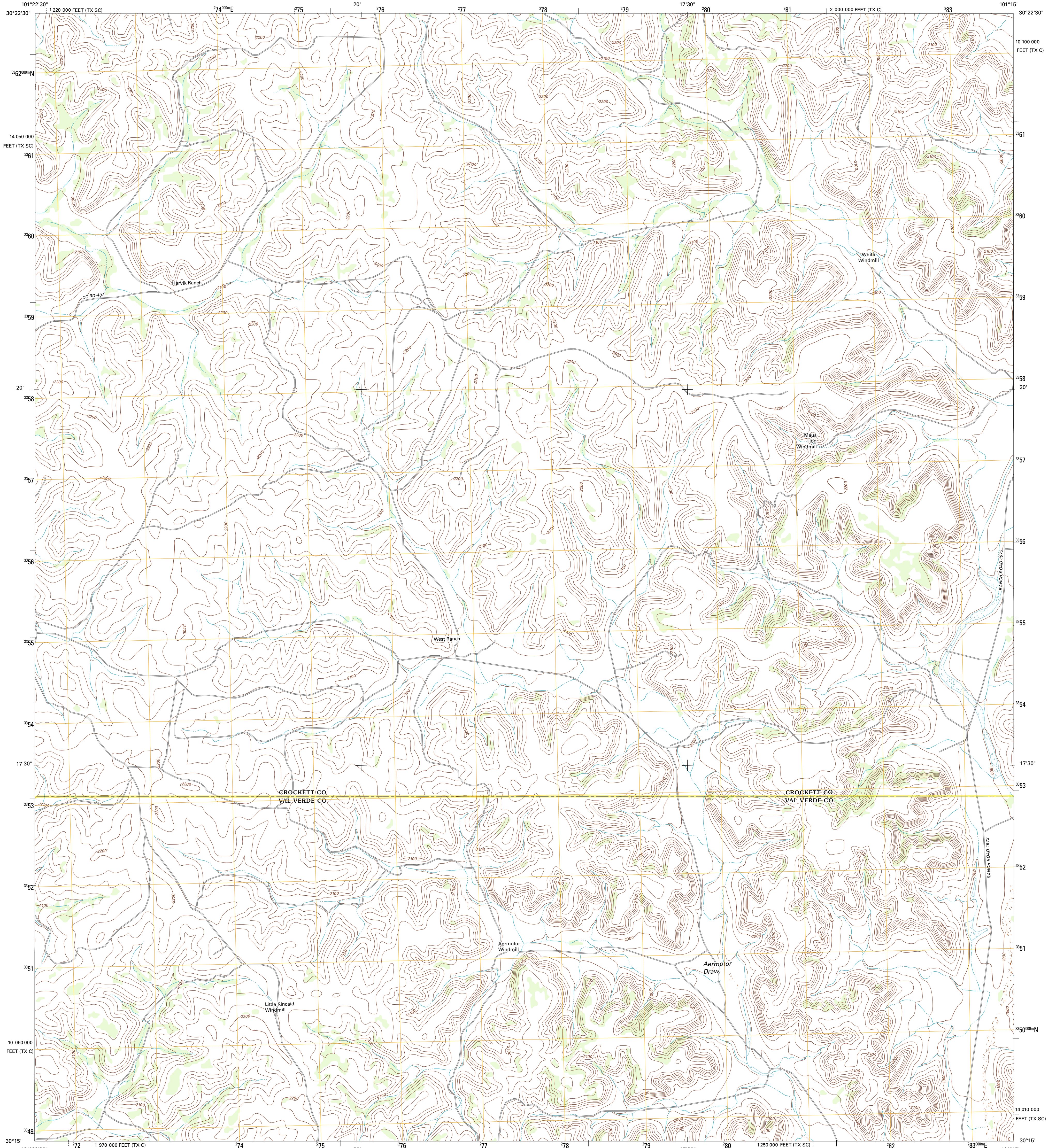




U.S. DEPARTMENT OF THE INTERIOR
U. S. GEOLOGICAL SURVEY

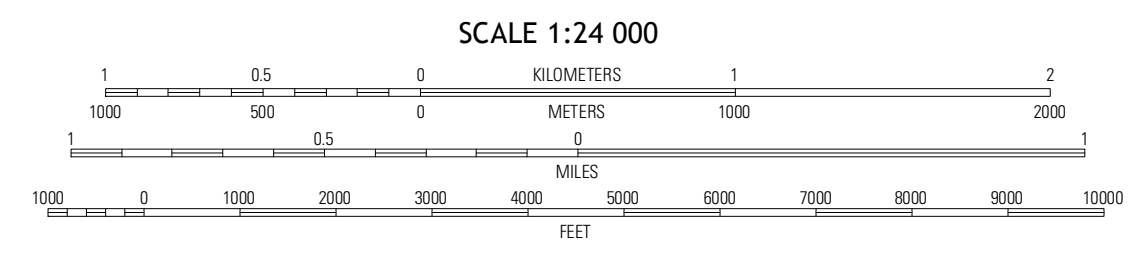
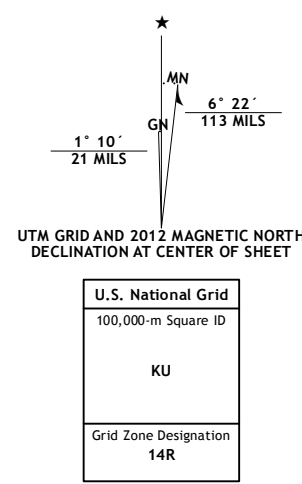


AERMOTOR DRAW QUADRANGLE
TEXAS
7.5-MINUTE SERIES



Produced by the United States Geological Survey
North American Datum of 1983 (NAD83)
World Geodetic System of 1984 (WGS84). Projection and
1 000-meter grid: Universal Transverse Mercator, Zone 14R,
10 000-foot ticks: Texas Coordinate System of 1983 (central and
south central zones)

Imagery.....NAP, May 2010
Roads.....©2006-2012 TomTom
Names.....GNIS, 2012
Hydrography.....National Hydrography Dataset, 2010
Contours.....National Elevation Dataset, 2006
Boundaries.....Census, IBWC, USGS, 1972 - 2012

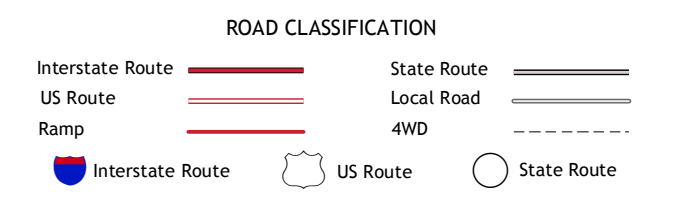


SCALE 1:24 000
CONTOUR INTERVAL 20 FEET
NORTH AMERICAN VERTICAL DATUM OF 1988
This map was produced to conform with the
National Geospatial Program US Topo Product Standard, 2011.
A metadata file associated with this product is draft version 0.6.7



QUADRANGLE LOCATION

Howards Well	Howards Well NE	Harrell Canyon
Howards Well SW	Aermotor Draw	Indian Draw
Divide Well Draw	Steel Star Draw	Bee Canyon



AERMOTOR DRAW, TX
2012