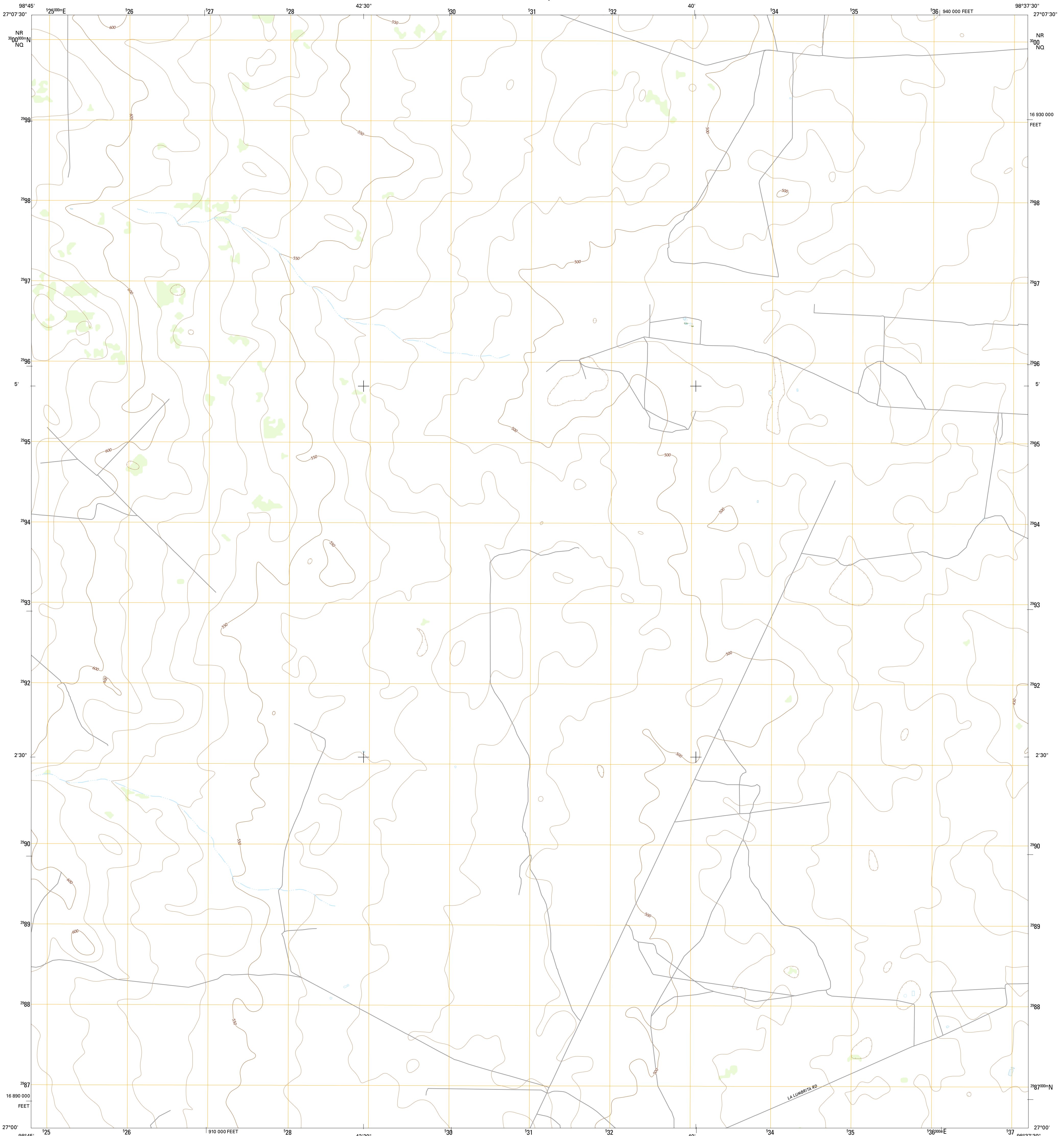




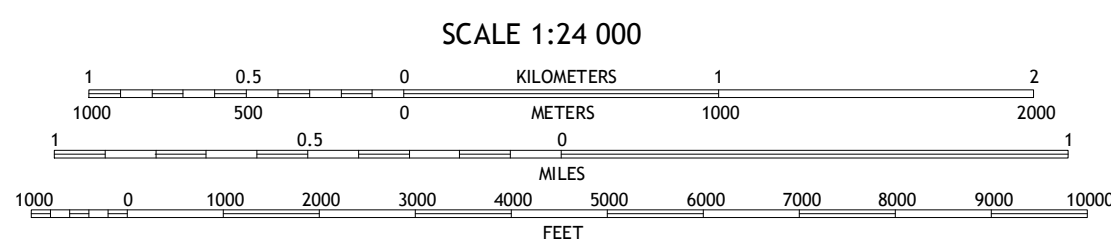
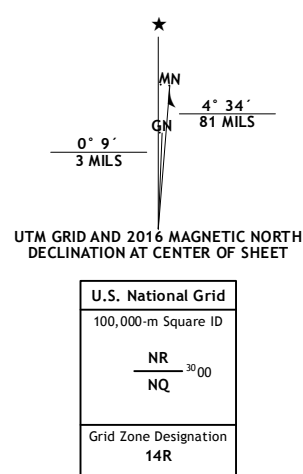
U.S. DEPARTMENT OF THE INTERIOR
U.S. GEOLOGICAL SURVEY



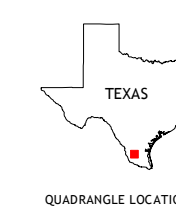
ALTA VISTA RANCH SW QUADRANGLE
TEXAS-JIM HOGG CO.
7.5-MINUTE SERIES



Produced by the United States Geological Survey
 North American Datum of 1983 (NAD83)
 World Geodetic System of 1984 (WGS84) Projection and
 1 000-meter grid: Universal Transverse Mercator, Zone 14R
 10 000-foot ticks: Texas Coordinate System of 1983 (south zone)
 This map is not a legal document. Boundaries may be
 generalized for this map scale. Private lands within government
 reservations may not be shown. Obtain permission before
 entering private lands.
 Imagery:.....NAIP, May 2014
 Roads:.....U.S. Census Bureau, 2014 - 2015
 Names:.....GNIS, 2015
 Hydrography:.....National Hydrography Dataset, 2014
 Contours:.....National Elevation Dataset, 2008
 Boundaries:.....Multiple sources; see metadata file 1972 - 2015
 Wetlands:.....FWS National Wetlands Inventory 1977 - 2014



SCALE 1:24 000
 CONTOUR INTERVAL 10 FEET
 NORTH AMERICAN VERTICAL DATUM OF 1988
 This map was produced to conform with the
 National Geospatial Program US Topo Product Standard, 2011.
 A metadata file associated with this product is draft version 0.6.19



1	2	3	1 Armstrong Ranch
4	5	5	2 McCampbell Ranch
6	7	8	3 Balzarre Ranch
			4 San Pablo Ranch
			5 Alta Vista Ranch
			6 San Antonio Viejo
			7 Agua Nueva NW
			8 Agua Nueva

ROAD CLASSIFICATION	
Expressway	Local Connector
Secondary Hwy	Local Road
Ramp	4WD
Interstate Route	US Route
	State Route

ALTA VISTA RANCH SW, TX
2016

