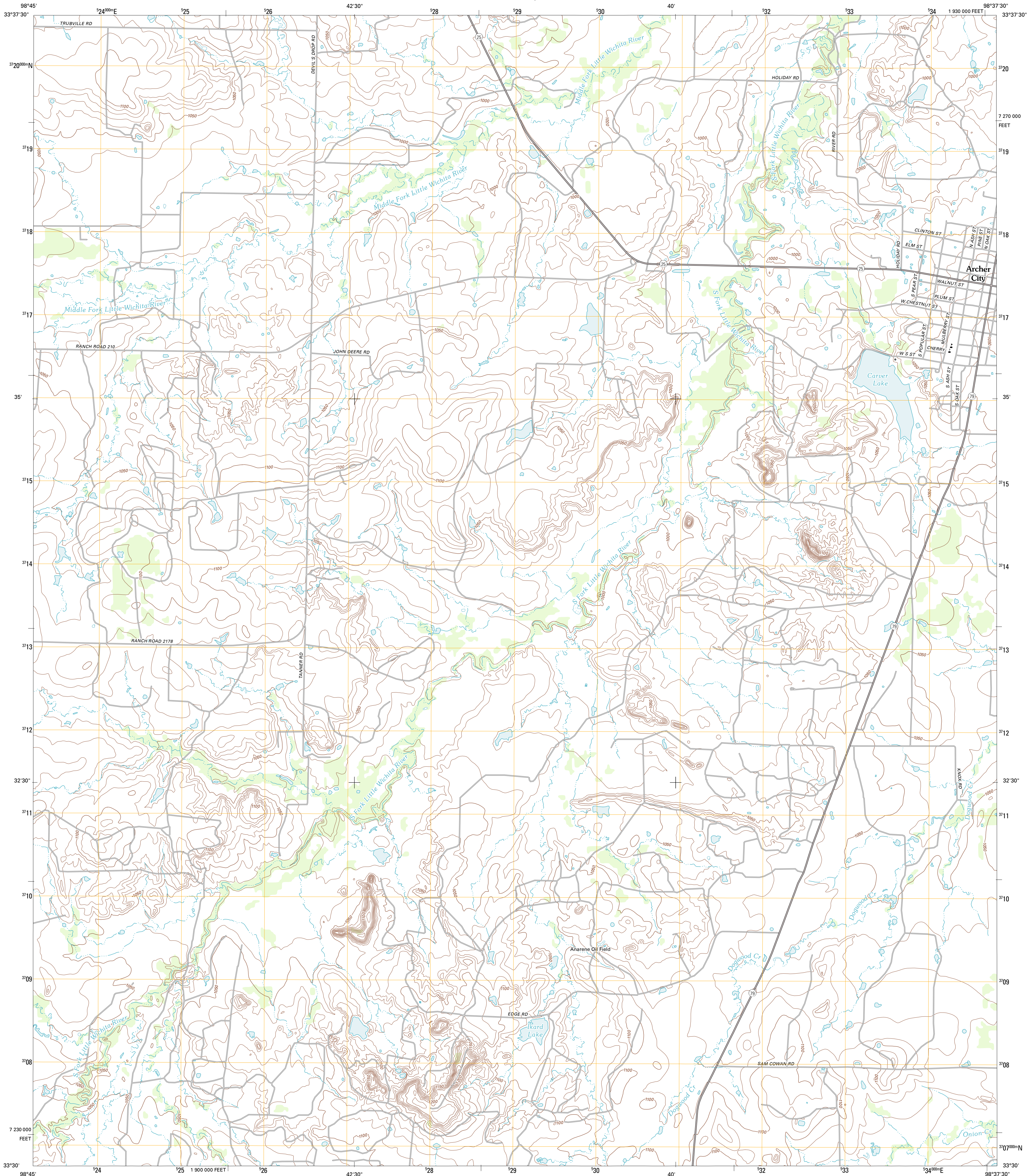




U.S. DEPARTMENT OF THE INTERIOR
U. S. GEOLOGICAL SURVEY



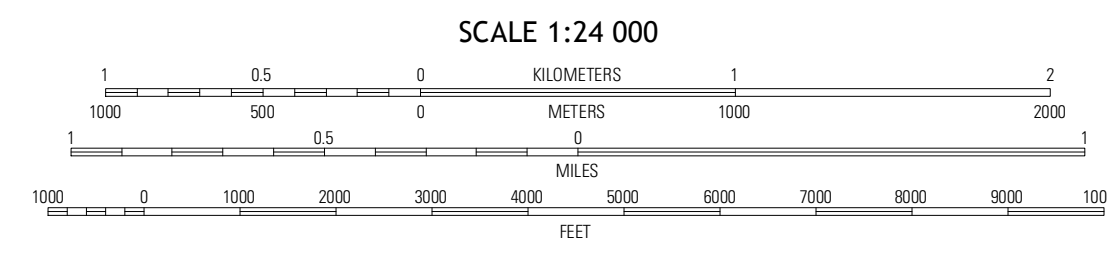
ARCHER CITY WEST QUADRANGLE
TEXAS-ARCHER CO.
7.5-MINUTE SERIES



Produced by the United States Geological Survey
North American Datum of 1983 (NAD83)
World Geodetic System of 1984 (WGS84). Projection and
1 000-meter grid: Universal Transverse Mercator, Zone 14S
10 000-foot tick: Texas Coordinate System of 1983 (north
central zone)

UTM GRID AND 2012 MAGNETIC NORTH
DECLINATION AT CENTER OF SHEET

U.S. National Grid 100,000 = Square ID
NC
Grid Zone Designation 14S



CONTOUR INTERVAL 10 FEET
NORTH AMERICAN VERTICAL DATUM OF 1988

This map was produced to conform with the
National Geospatial Program US Topo Product Standard, 2011.
A metadata file associated with this product is draft version 0.6.7



QUADRANGLE LOCATION

Lake Kickapoo	Dads Corner	Archer City NE
Dundee SE	Archer City West	Archer City East
Lake Olney	Bobbat Bluff	Prickly Pear Branch

ROAD CLASSIFICATION

Interstate Route
US Route
Ramp

State Route
Local Road
4WD
US Route
State Route

ARCHER CITY WEST, TX
2012

ADJOINING 7.5 QUADRANGLES