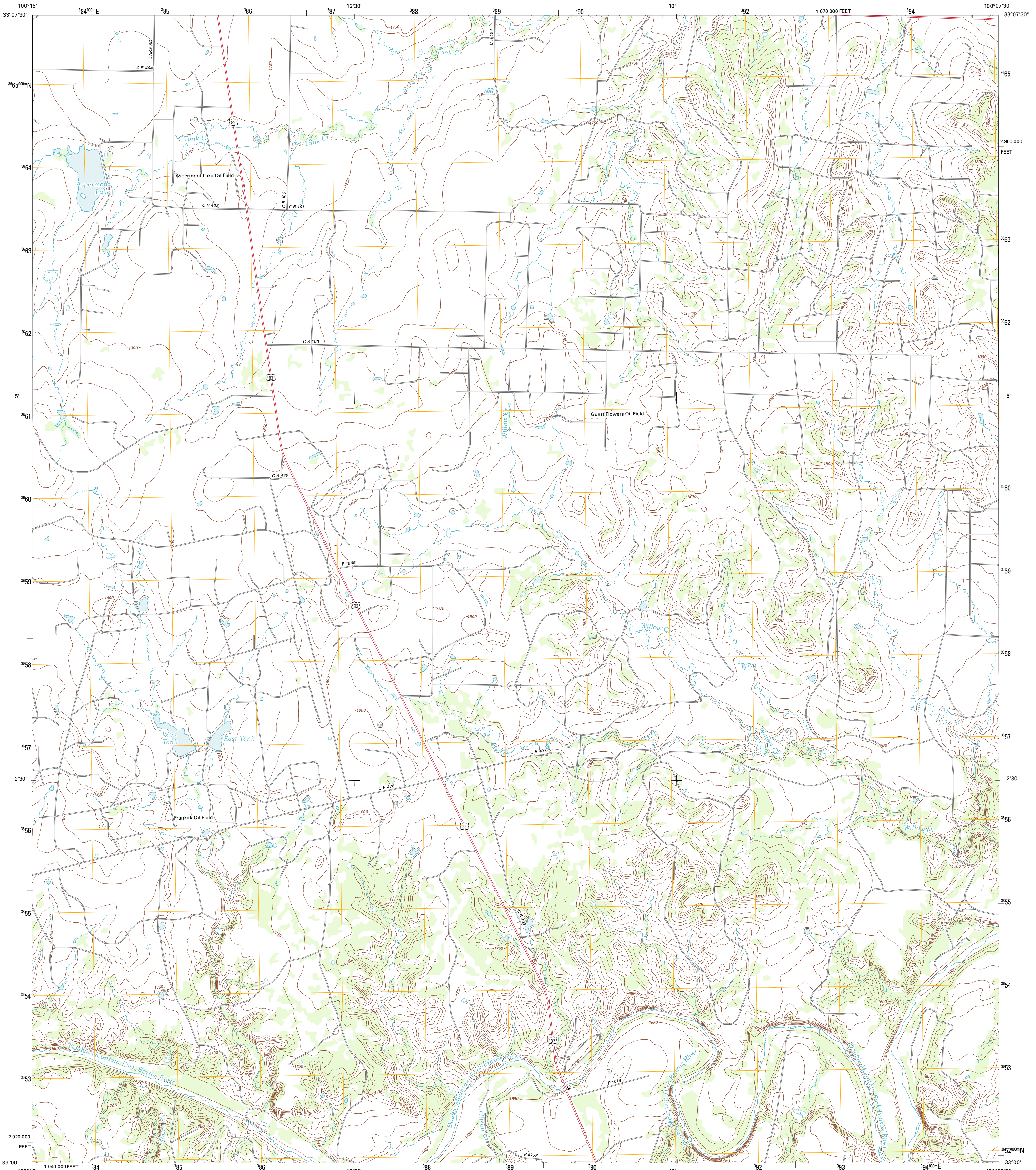




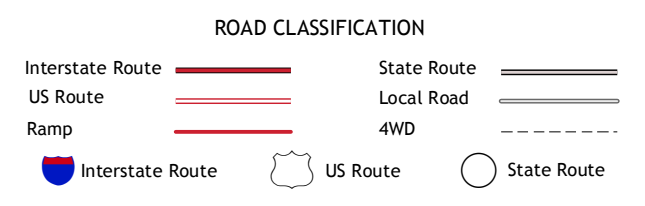
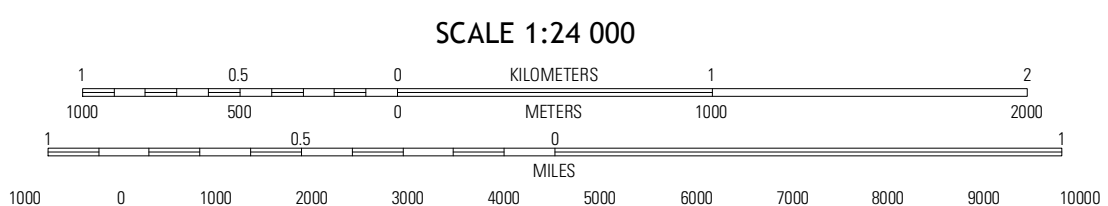
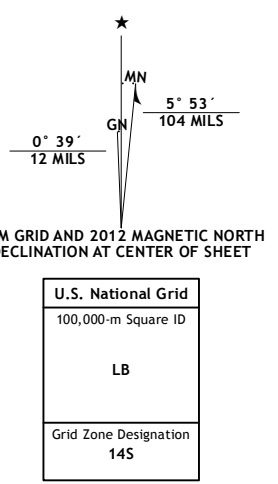
U.S. DEPARTMENT OF THE INTERIOR  
U. S. GEOLOGICAL SURVEY



ASPERMONT LAKE QUADRANGLE  
TEXAS-STONEWALL CO.  
7.5-MINUTE SERIES



Produced by the United States Geological Survey  
North American Datum of 1983 (NAD83)  
World Geodetic System of 1984 (WGS84), Projection and  
1 000-meter grid: Universal Transverse Mercator, Zone 14S  
10 000-foot ticks: Texas Coordinate System of 1983 (north  
central zone)



Imagery.....NAIP, August 2010  
Roads.....©2006-2012 TomTom  
Names.....GNIS, 2012  
Hydrography.....National Hydrography Dataset, 2010  
Contours.....National Elevation Dataset, 2010  
Boundaries.....Census, IBWC, IBC, USGS, 1972 - 2012

CONTOUR INTERVAL 10 FEET  
NORTH AMERICAN VERTICAL DATUM OF 1988  
This map was produced to conform with the  
National Geospatial Program US Topo Product Standard, 2011.  
A metadata file associated with this product is draft version 0.6.7

QUADRANGLE LOCATION

|               |                |               |
|---------------|----------------|---------------|
| Swenson       | Aspermont      | Old Glory     |
| Ocon Hollow   | Aspermont Lake | Prng Mountain |
| Poke Mountain | Hamlin NW      | Hamlin NE     |

ASPERMONT LAKE, TX  
2012

ADJOINING 7.5 QUADRANGLES