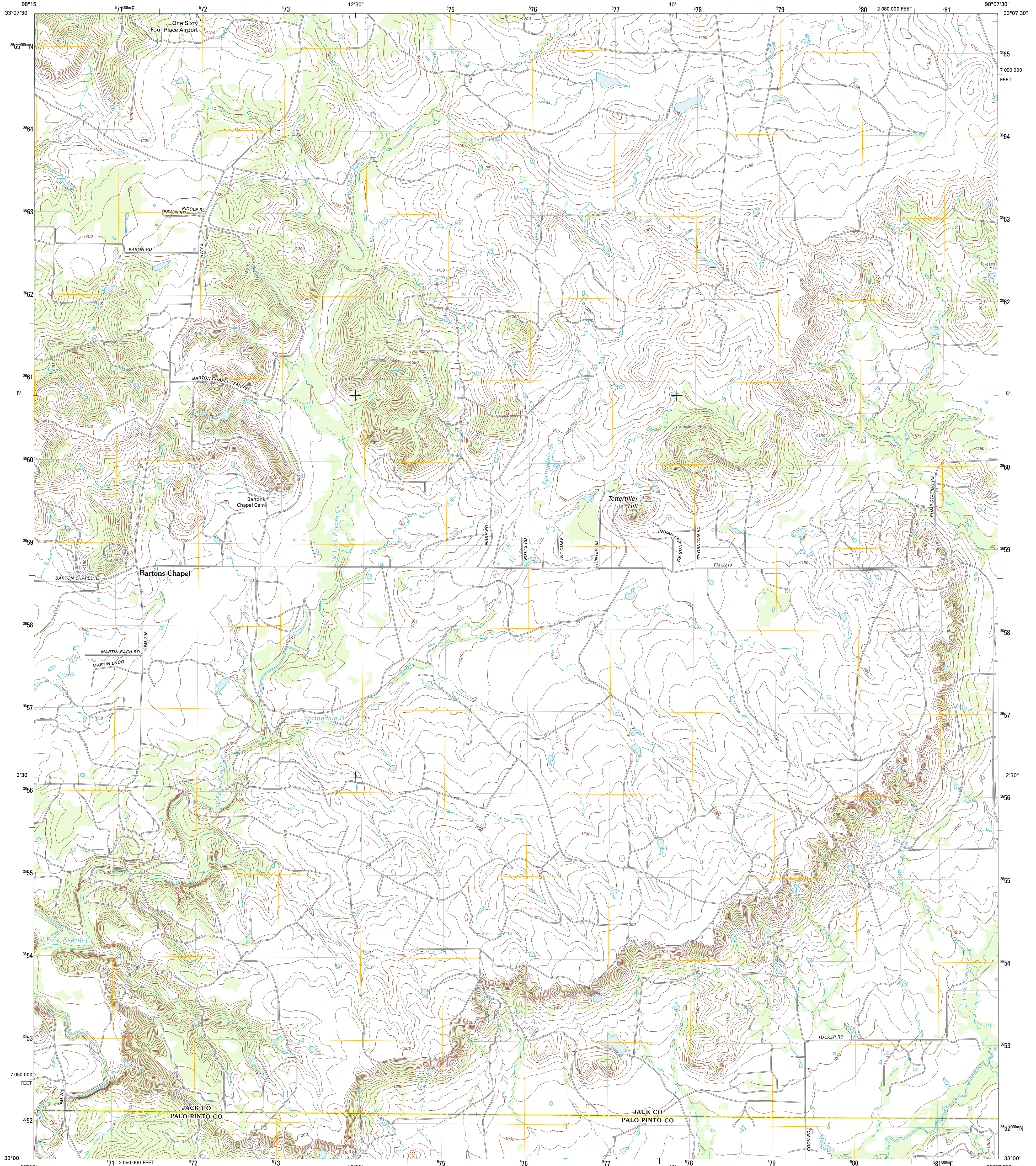




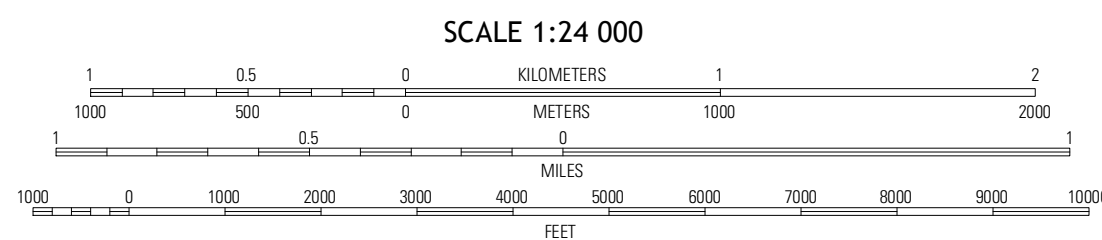
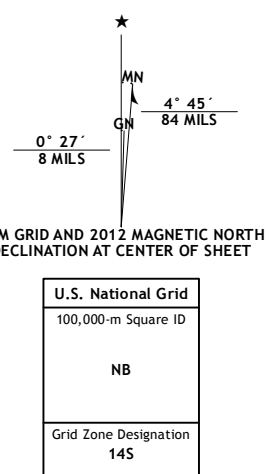
U.S. DEPARTMENT OF THE INTERIOR
U. S. GEOLOGICAL SURVEY



BARTONS CHAPEL QUADRANGLE
TEXAS
7.5-MINUTE SERIES



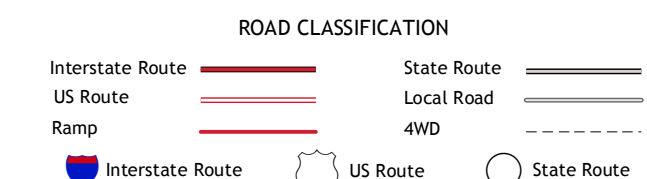
Produced by the United States Geological Survey
North American Datum of 1983 (NAD83)
World Geodetic System of 1984 (WGS84), Projection and
1 000-meter grid; Universal Transverse Mercator, Zone 14S
10 000-foot ticks; Texas Coordinate System of 1983 (north
central zone)



QUADRANGLE LOCATION

Senate	Jackson	Jackson NE
Long Hollow	Bartons Chapel	Perrin
Crawford West	Crawford East	What

ADJOINING 7.5 QUADRANGLES



BARTONS CHAPEL, TX
2012