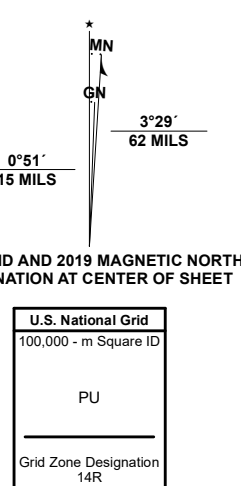


Produced by the United States Geological Survey

North American Datum of 1983 (NAD83)
World Geodetic System of 1984 (WGS84)
Projection and 1000-meter grid/Universal Transverse Mercator, Zone 14R
This map is not a legal document. Boundaries may be generalized for this map scale. Private lands within government reservations may not be shown. Obtain permission before entering private lands.

Imagery: N/AIP, September 2016 - November 2016
Roads: U.S. Census Bureau, 2015 - 2019
Names: GNS, 1975 - 2022
Hydrography: National Hydrography Dataset, 2000 - 2018
Contours: National Elevation Dataset, 2019
Boundaries: Multiple sources; see metadata file 2019 - 2021
Wetlands: FWS National Wetlands Inventory, Not Available



CONTOUR INTERVAL 10 FEET
NORTH AMERICAN VERTICAL DATUM OF 1988
This map was produced to conform with the National Geospatial Program US Topo Product Standard.



QUADRANGLE LOCATION

Table with 3 columns and 3 rows showing the 8-neighborhood grid system around the central quadrangle. The central quadrangle is marked with a red '5'.

- 1 Uley
2 Lake Bastrop
3 Smithville NW
4 Bastrop SW
5 Smithville
6 Red Rock
7 Rosanky
8 Topo

ROAD CLASSIFICATION legend table with symbols for Expressway, Secondary Hwy, Ramp, Interstate Route, Local Connector, Local Road, 4WD, US Route, and State Route.

