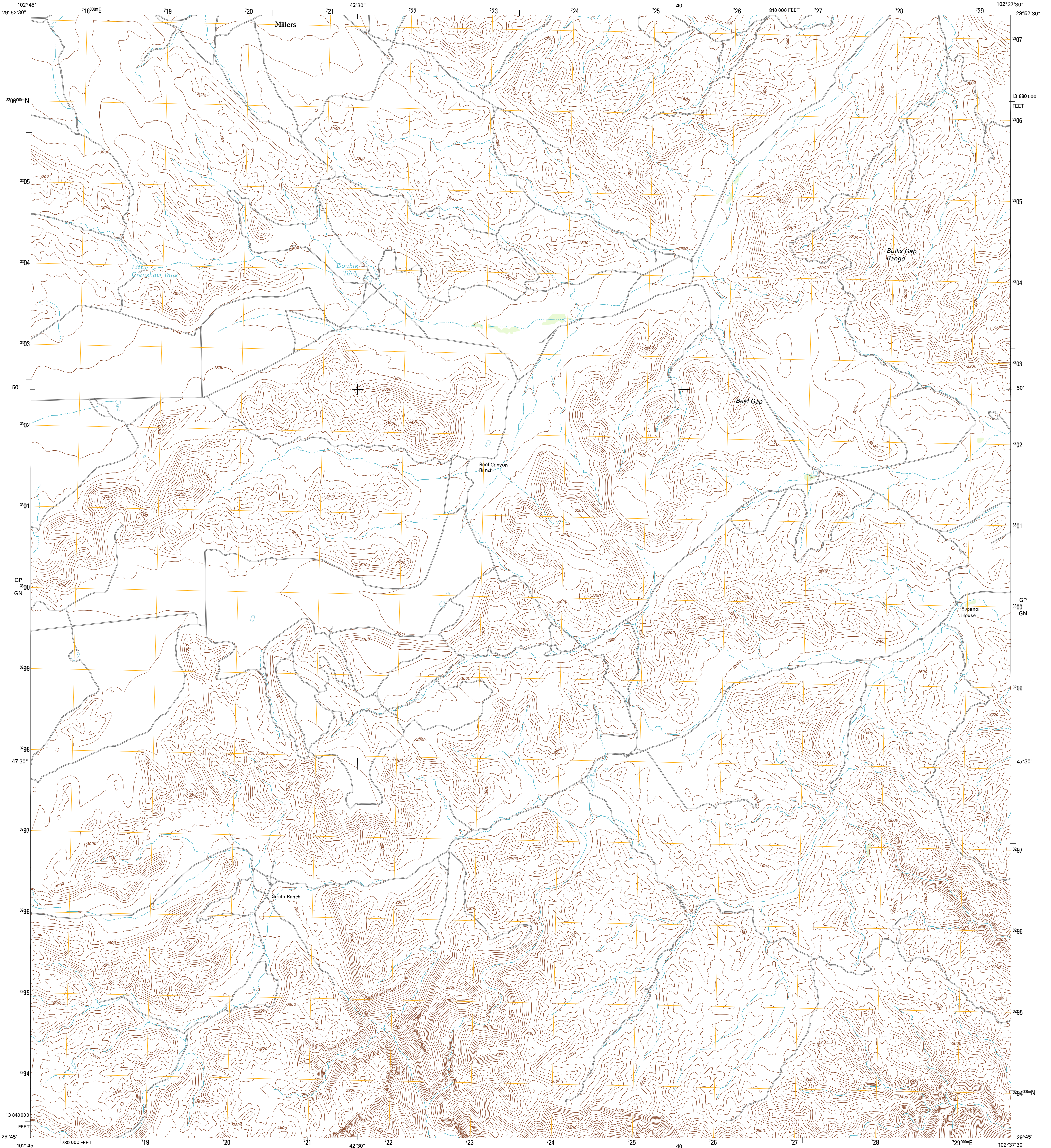




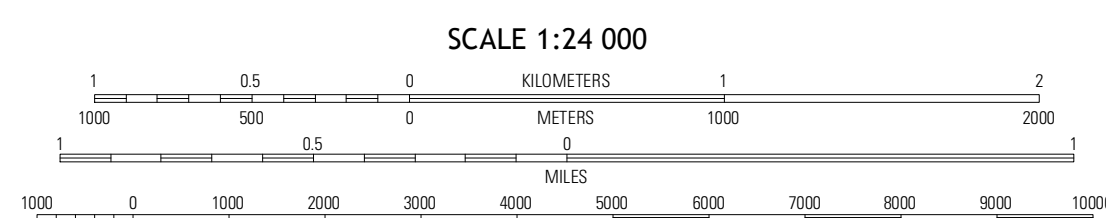
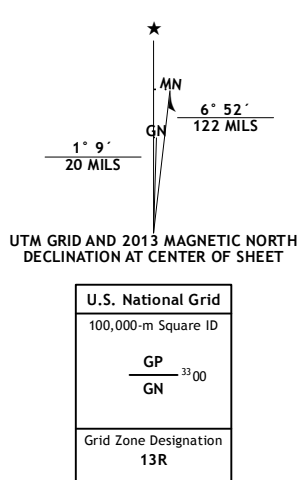
U.S. DEPARTMENT OF THE INTERIOR  
U. S. GEOLOGICAL SURVEY



**BEEF GAP QUADRANGLE**  
TEXAS-BREWSTER CO.  
7.5-MINUTE SERIES



Produced by the United States Geological Survey  
North American Datum of 1983 (NAD83)  
World Geodetic System of 1984 (WGS84), Projection and  
1 000-meter grid: Universal Transverse Mercator, Zone 13R  
10 000-foot ticks: Texas Coordinate System of 1983 (south  
central zone)

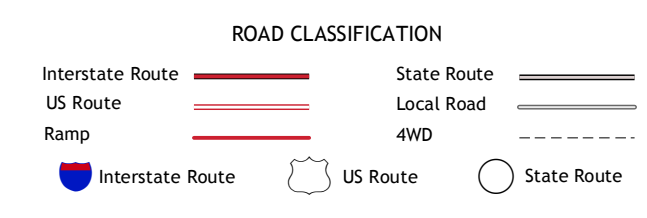


CONTOUR INTERVAL 40 FEET  
NORTH AMERICAN VERTICAL DATUM OF 1988  
This map was produced to conform with the  
National Geospatial Program US Topo Product Standard, 2011.  
A metadata file associated with this product is draft version 0.6.7



QUADRANGLE LOCATION

Pine Mountain East	San Francisco Shutspe	Bullis Gap NE
Dove Mountain	Beef Gap	Bullis Gap
Cupola Mountain	Las Vegas De Las Ladrones	San Rosendo



Imagery.....N.A.I.P., August 2010  
Roads.....C2006-2012 TomTom  
Names.....GNIS, 2012  
Hydrography.....National Hydrography Dataset, 2010  
Contours.....National Elevation Dataset, 2006  
Boundaries.....Census, IBWC, IBC, USGS, 1972 - 2012

**BEEF GAP, TX**  
2013

ADJOINING 7.5 QUADRANGLES