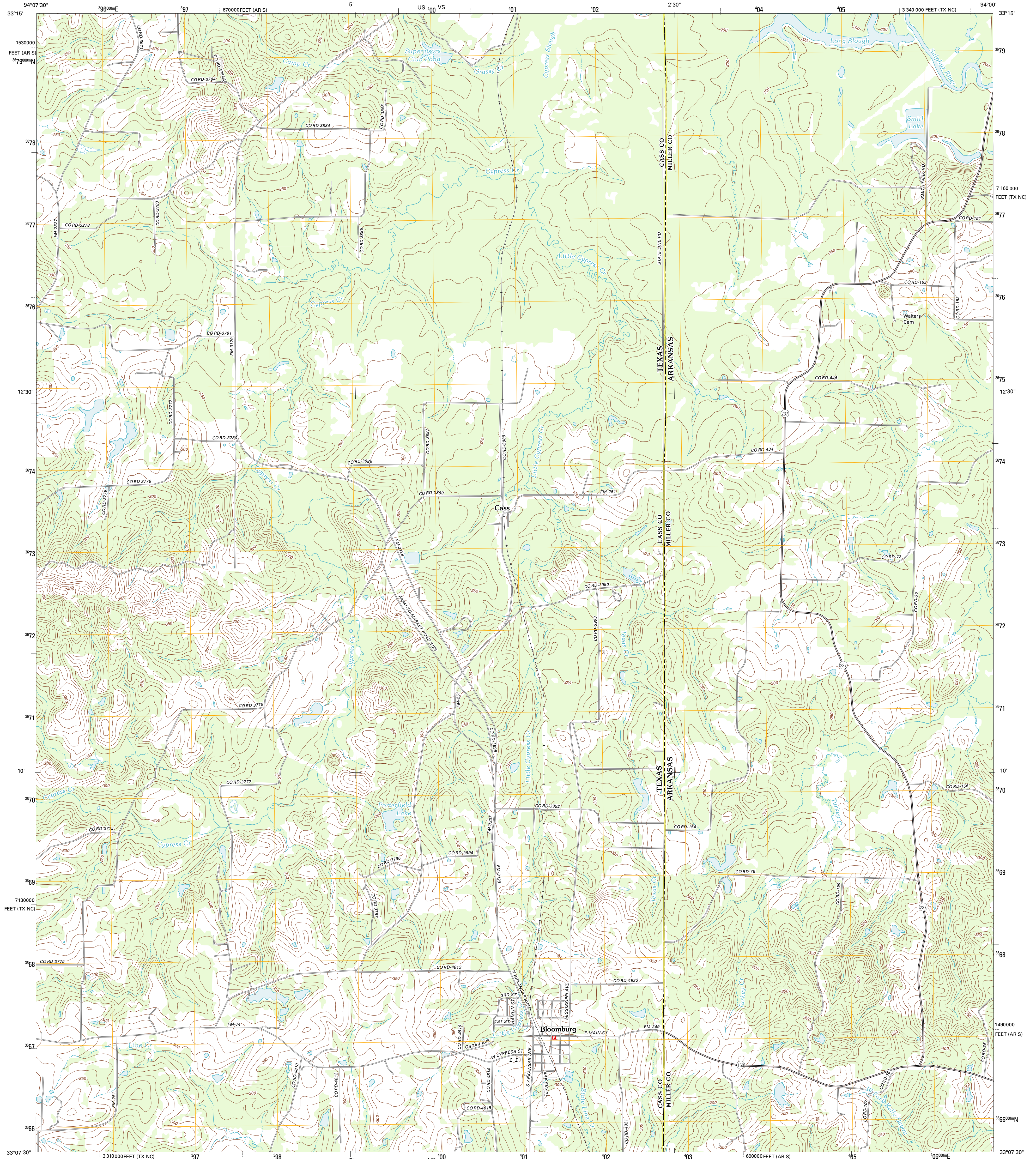




U.S. DEPARTMENT OF THE INTERIOR  
U. S. GEOLOGICAL SURVEY



BLOOMBURG QUADRANGLE  
TEXAS-ARKANSAS  
7.5-MINUTE SERIES

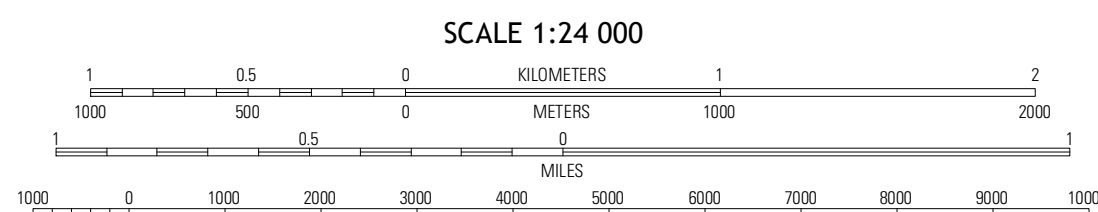


Produced by the United States Geological Survey  
North American Datum of 1983 (NAD83)  
World Geodetic System of 1984 (WGS84), Projection and  
1 000-meter grid; Universal Transverse Mercator, Zone 15S  
10 000-foot ticks; Texas Coordinate System of 1983 (north  
central zone), Arkansas Coordinate System of 1983 (south zone)

Imagery.....NAIP, August 2010  
Roads.....©2006-2012 TomTom  
Names.....GNS, 2012  
Hydrography.....National Hydrography Dataset, 2010  
Contours.....National Elevation Dataset, 2004  
Boundaries.....Census, IBW, IBC, USGS, 1972 - 2012

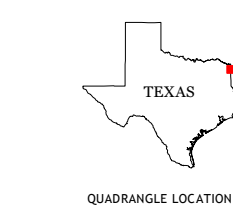
UTM GRID AND 2013 MAGNETIC NORTH  
DECLINATION AT CENTER OF SHEET

U.S. National Grid 100,000-m Square ID	100 US VS
Grid Zone Designation	15S



CONTOUR INTERVAL 10 FEET  
NORTH AMERICAN VERTICAL DATUM OF 1988

This map was produced to conform with the  
National Geospatial Program US Topo Product Standards, 2011.  
A metadata file associated with this product is draft version 0.6.7



QUADRANGLE LOCATION

Wright Palmer Lake	Domino	Fouke
Atlanta North	Bloomburg	Doddridge NW
Atlanta South	Ravanna	Doddridge

ADJOINING 7.5 QUADRANGLES

ROAD CLASSIFICATION

Interstate Route	State Route
US Route	Local Road
Ramp	4WD

Interstate Route  
 US Route  
 State Route

BLOOMBURG, TX-AR  
2013