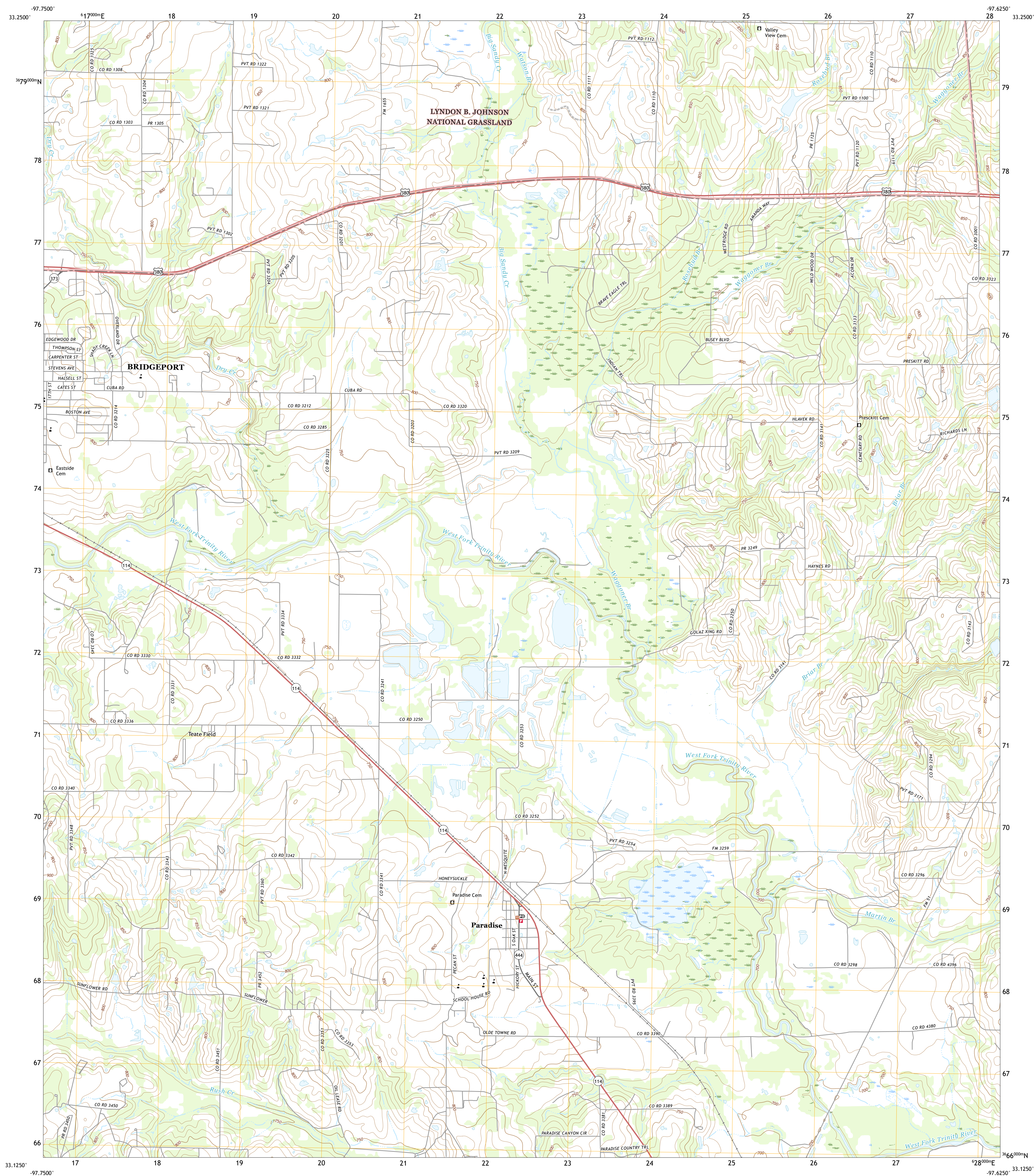




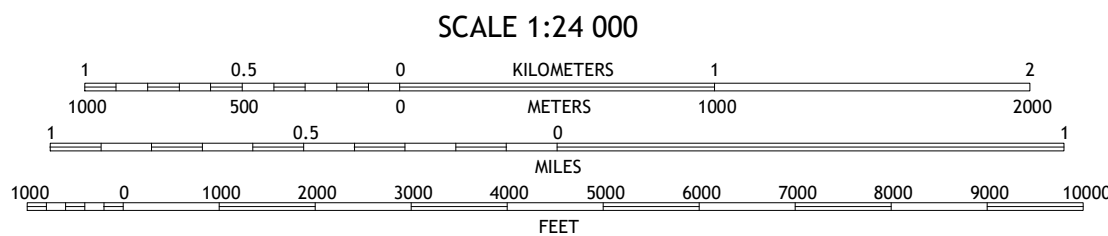
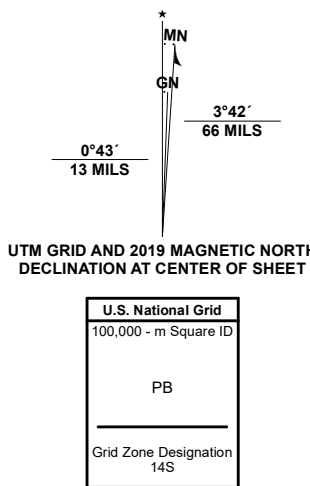
BRIDGEPORT EAST QUADRANGLE
TEXAS - WISE COUNTY
7.5-MINUTE SERIES



North American Datum of 1983 (NAD83)
World Geodetic System of 1984 (WGS84). Projection and
1 000 meter grid interval (UTM Zone 14S)
This map is not a legal document. Boundaries may be
generalized for this map scale. Private lands within government
reservations may not be shown. Omit permission before
entering private lands.

Imagery	NAP, October 2016 - November 2016
Roads	U.S. Census Bureau, 2015
Roads within US Forest	US Forest Service, 2015
.....	with limited Forest Service updates, Not Available
Names, GNS, 2008 - 2021
.....	National Hydrographic Survey, 2016
Contours	National Elevation Dataset, 2002
Boundaries	Multiple sources; see metadata file 2017 - 2021

Wetlands	FWS	National Wetlands Inventory	Not Available
----------	-------	-----	-----------------------------	---------------



CONTOUR INTERVAL 10 FEET
NORTH AMERICAN VERTICAL DATUM OF 1988

This map was produced to conform with the
National Geospatial Program US Topo Product Standard.



1	2	3
4		5
6	7	8

- 1 Chico
- 2 Alvord
- 3 Pecan Creek
- 4 Bridgeport West
- 5 Decatur
- 6 Boonsville
- 7 Cottondale
- 8 Boyd

ROAD CLASSIFICATION

<p>Expressway </p> <p>Secondary Hwy </p> <p>Ramp </p>	<p>Local Connector </p> <p>Local Road </p> <p>4WD </p>
<p> Interstate Route</p> <p> FS Primary Route</p>	<p> US Route</p> <p> FS Passenger Route</p>
	<p> State Route</p> <p> FS High Clearance Route</p>

Check with local Forest Service unit
for current travel conditions and restrictions.

BRIDGEPORT EAST, TX
2022

