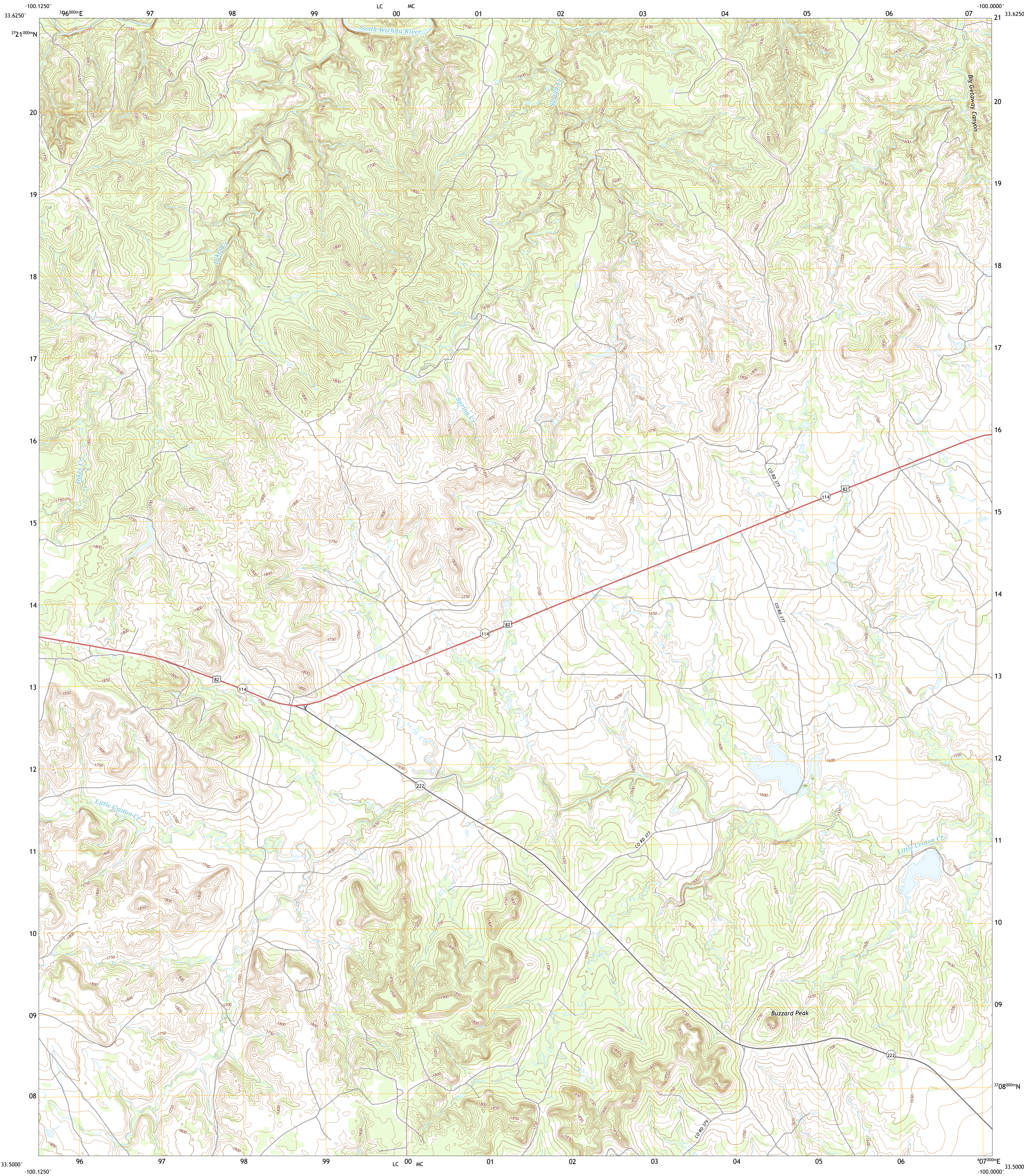




U.S. DEPARTMENT OF THE INTERIOR
U.S. GEOLOGICAL SURVEY



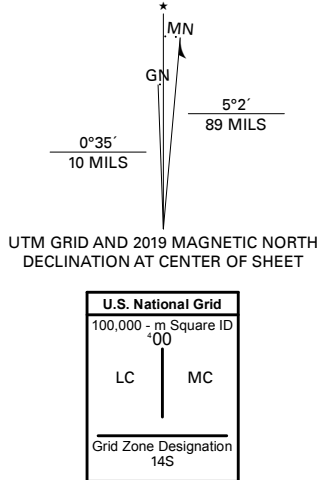
BUZZARD PEAK QUADRANGLE
TEXAS - KING COUNTY
7.5-MINUTE SERIES



Produced by the United States Geological Survey

North American Datum of 1983 (NAD83)
World Geodetic System of 1984 (WGS84), Projection and
1 000-meter grid/Universal Transverse Mercator, Zone 14S
This map is not a legal document. Boundaries may be
generalized for this map scale. Private lands within government
reservations may not be shown. Obtain permission before
entering private lands.

Imagery.....NAIP, October 2016 - November 2016
Roads.....U.S. Census Bureau, 2015 - 2018
Names.....GNIS, 1979 - 2015
Hydrography.....National Hydrography Dataset, 2002 - 2018
Contours.....National Elevation Dataset, 2005 - 2010
Boundaries.....Multiple sources; see metadata file 2016 - 2017
Wetlands.....FWS National Wetlands Inventory 1984



QUADRANGLE LOCATION

1	2	3
4	5	6
7	8	9

1 J Y Ranch
2 Ox Yoke Creek
3 Maverick Flat
4 Dark Canyon
5 Cedar Mountain
6 Kiowa Peak NW
7 Kiowa Peak NE
8 Knox City NW

ROAD CLASSIFICATION		
Expressway	Local Connector	
Secondary Hwy	Local Road	
Ramp	4WD	
Interstate Route	US Route	State Route

BUZZARD PEAK, TX
2019



NSN 75643016305324
NSA REF NO. USGS X 2 4 K 6 5 2 6