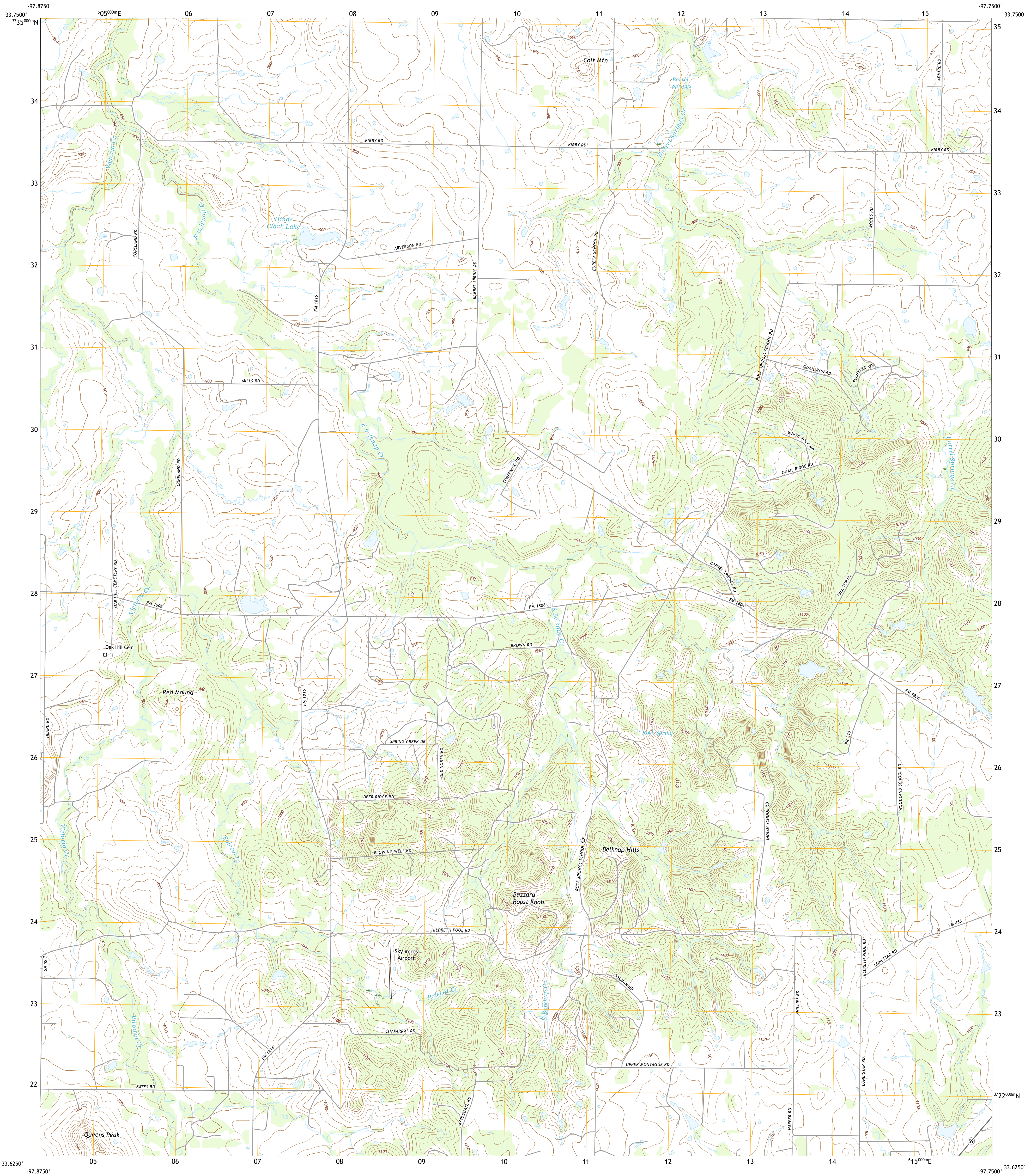




U.S. DEPARTMENT OF THE INTERIOR  
U.S. GEOLOGICAL SURVEY



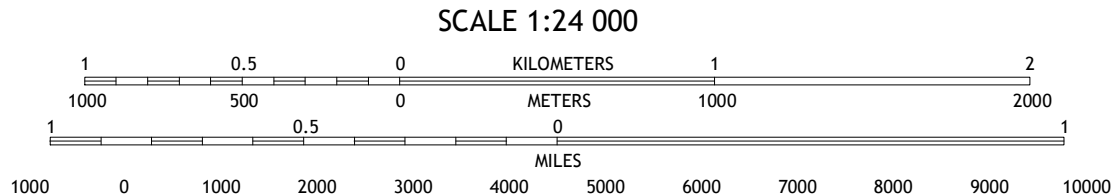
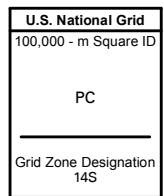
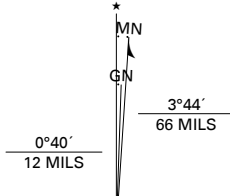
BUZZARD ROOST KNOB QUADRANGLE  
TEXAS - MONTAGUE COUNTY  
7.5-MINUTE SERIES



Produced by the United States Geological Survey

North American Datum of 1983 (NAD83)  
World Geodetic System of 1984 (WGS84). Projection and  
1 000-meter grid/Universal Transverse Mercator, Zone 14S  
This map is not a legal document. Boundaries may be  
generalized for this map scale. Private lands within government  
reservations may not be shown. Obtain permission before  
entering private lands.

Imagery.....NAIP, September 2016 - November 2016  
Roads.....U.S. Census Bureau, 2015 - 2018  
Names.....GNIS, 1979 - 2011  
Hydrography.....National Hydrography Dataset, 2000 - 2018  
Contours.....National Elevation Dataset, 2004  
Boundaries.....Multiple sources; see metadata file 2016 - 2017  
Wetlands.....FWS National Wetlands Inventory 1981



CONTOUR INTERVAL 10 FEET  
NORTH AMERICAN VERTICAL DATUM OF 1988  
This map was produced to conform with the  
National Geospatial Program US Topo Product Standard, 2011.  
A metadata file associated with this product is draft version 0.6.18



1	2	3
4	5	6
7	8	9

1 Ringgold  
2 Belcherville  
3 Nocona  
4 Stoneburg  
5 Montague  
6 Brushy Mound  
7 Bowie  
8 Salina

ROAD CLASSIFICATION	
Expressway	Local Connector
Secondary Hwy	Local Road
Ramp	4WD
Interstate Route	US Route
	State Route

BUZZARD ROOST KNOB, TX

2019

