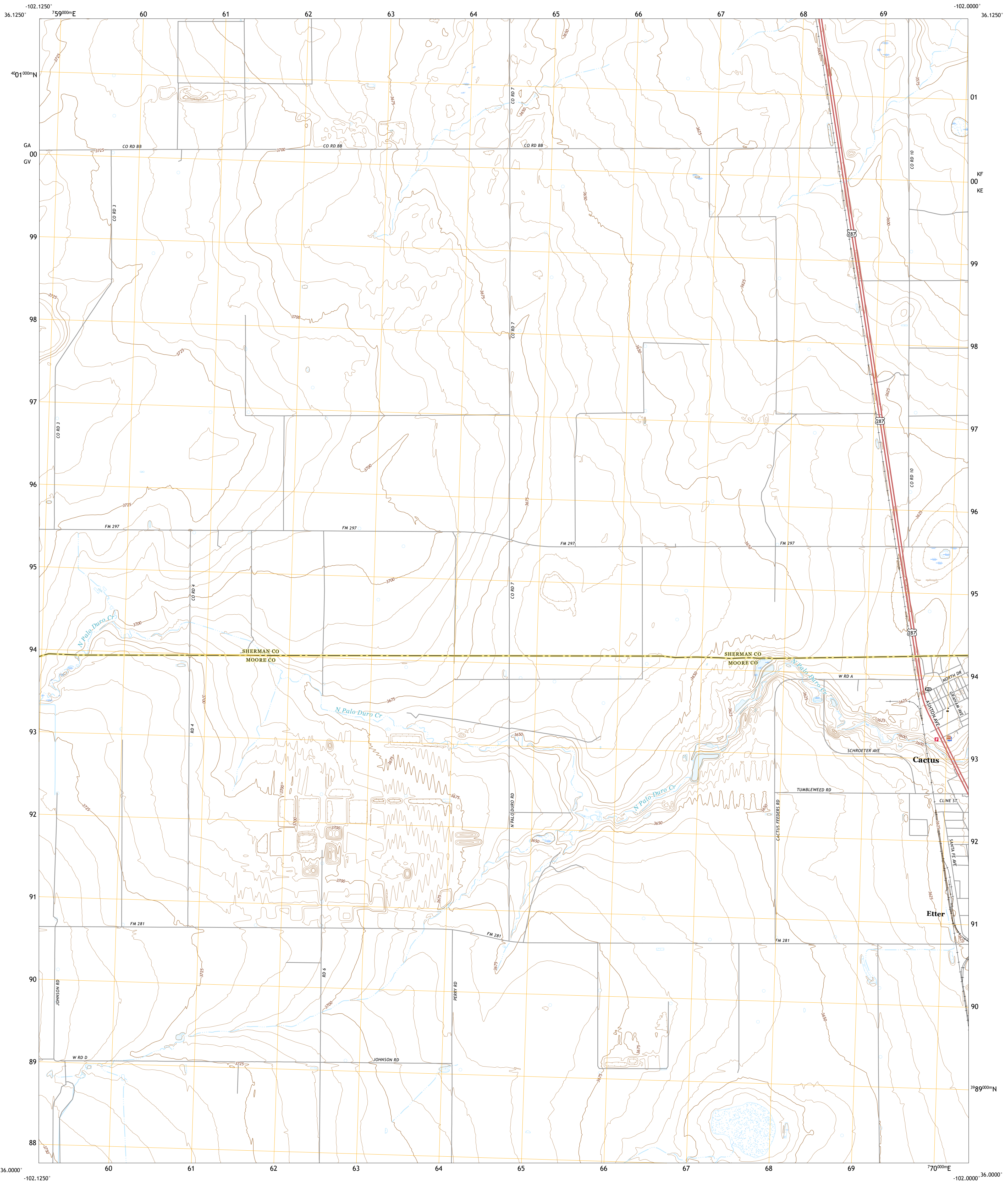




U.S. DEPARTMENT OF THE INTERIOR  
U.S. GEOLOGICAL SURVEY



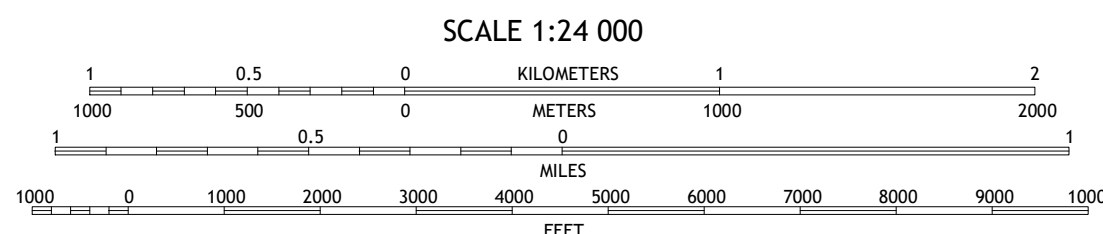
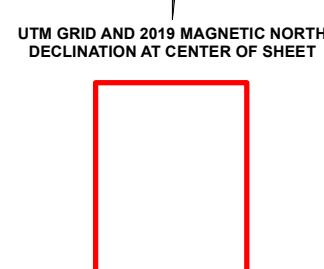
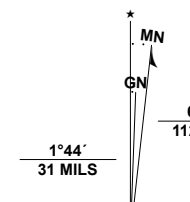
CACTUS WEST QUADRANGLE  
TEXAS  
7.5-MINUTE SERIES



**Produced by the United States Geological Survey**

North American Datum of 1983 (NAD83)  
World Geodetic System of 1984 (WGS84). Projection and  
1 000-meter grid/Universal Transverse Mercator, Zone 13S  
This map is not a legal document. Boundaries may be  
generalized for this map scale. Private lands within government  
reservations may not be shown. Obtain permission before  
entering private lands.

Imagery.....N.A.I.P., August 2016 - November 2016  
Roads.....U.S. Census Bureau, 2015  
Names.....GNIS, 1979 - 2021  
Hydrography.....National Hydrography Dataset, 2004 - 2018  
Contours.....National Elevation Dataset, 2019  
Boundaries.....Multiple sources; see metadata file 2019 - 2021  
Wetlands.....FWS National Wetlands Inventory Not Available



1	2	3
4	5	6
7	8	9

- 1 Conlen
- 2 Lautz
- 3 Spurlock Chapel
- 4 Exum
- 5 Cactus East
- 6 Moran Ranch
- 7 Stallwitz Lake NE
- 8 Dumas North

**ROAD CLASSIFICATION**

	Expressway		Local Connector
	Secondary Hwy		Local Road
	Ramp		4WD
	Interstate Route		US Route
			State Route

CONTOUR INTERVAL 5 FEET  
NORTH AMERICAN VERTICAL DATUM OF 1988  
This map was produced to conform with the  
National Geospatial Program US Topo Product Standard.

CACTUS WEST, TX  
2022

