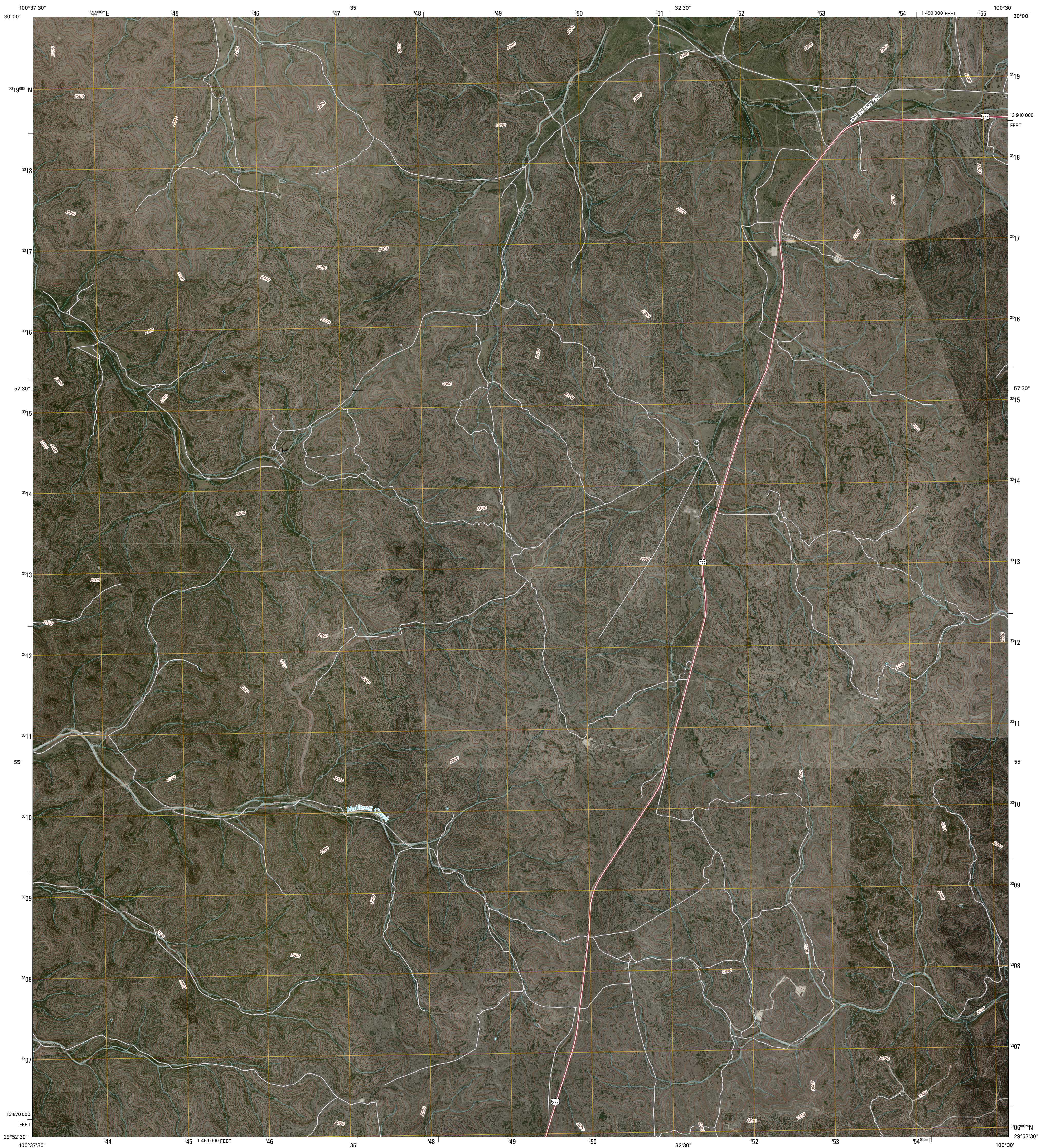




U.S. DEPARTMENT OF THE INTERIOR  
U. S. GEOLOGICAL SURVEY

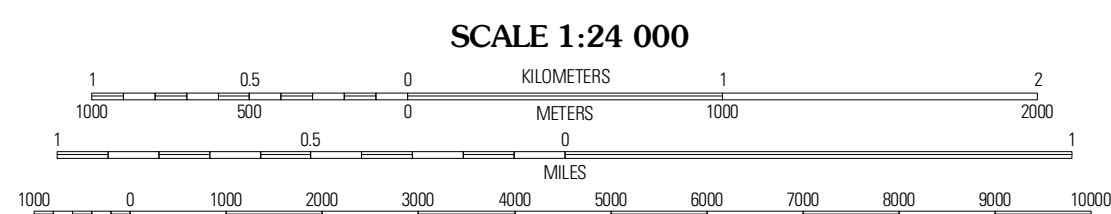
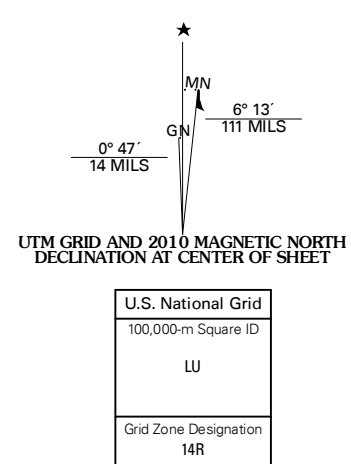


CARTA VALLEY NE QUADRANGLE  
TEXAS  
7.5-MINUTE SERIES



Produced by the United States Geological Survey  
North American Datum of 1983 (NAD83)  
World Geodetic System of 1984 (WGS84). Projection and  
1 000-meter grid; Universal Transverse Mercator, Zone 14R  
10 000-foot ticks; Texas Coordinate System of 1983  
(south central zone)

Imagery.....NAP, May 2008  
Roads.....US Census Bureau TIGER data  
with limited USGS updates, 2006  
Names.....GNIS, 2008  
Hydrography.....National Hydrography Dataset, 1995  
Contours.....National Elevation Dataset, 2006



CONTOUR INTERVAL 20 FEET

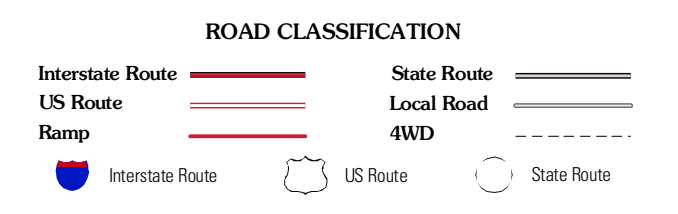
This map was produced to conform with version 0.5.10 of the  
draft USGS Standards for 7.5-Minute Quadrangle Maps.  
A metadata file associated with this product is also draft version 0.5.10



QUADRANGLE LOCATION

Four Mills	Turney Draw SE	Ray Lake SW
Hokcombs Draw	Carta Valley NE	Black Waterhole
Carta Valley	Carta Valley SE	Two-mile Draw

ADJOINING 7.5' QUADRANGLES  
TX 29100-344



CARTA VALLEY NE, TX  
2010