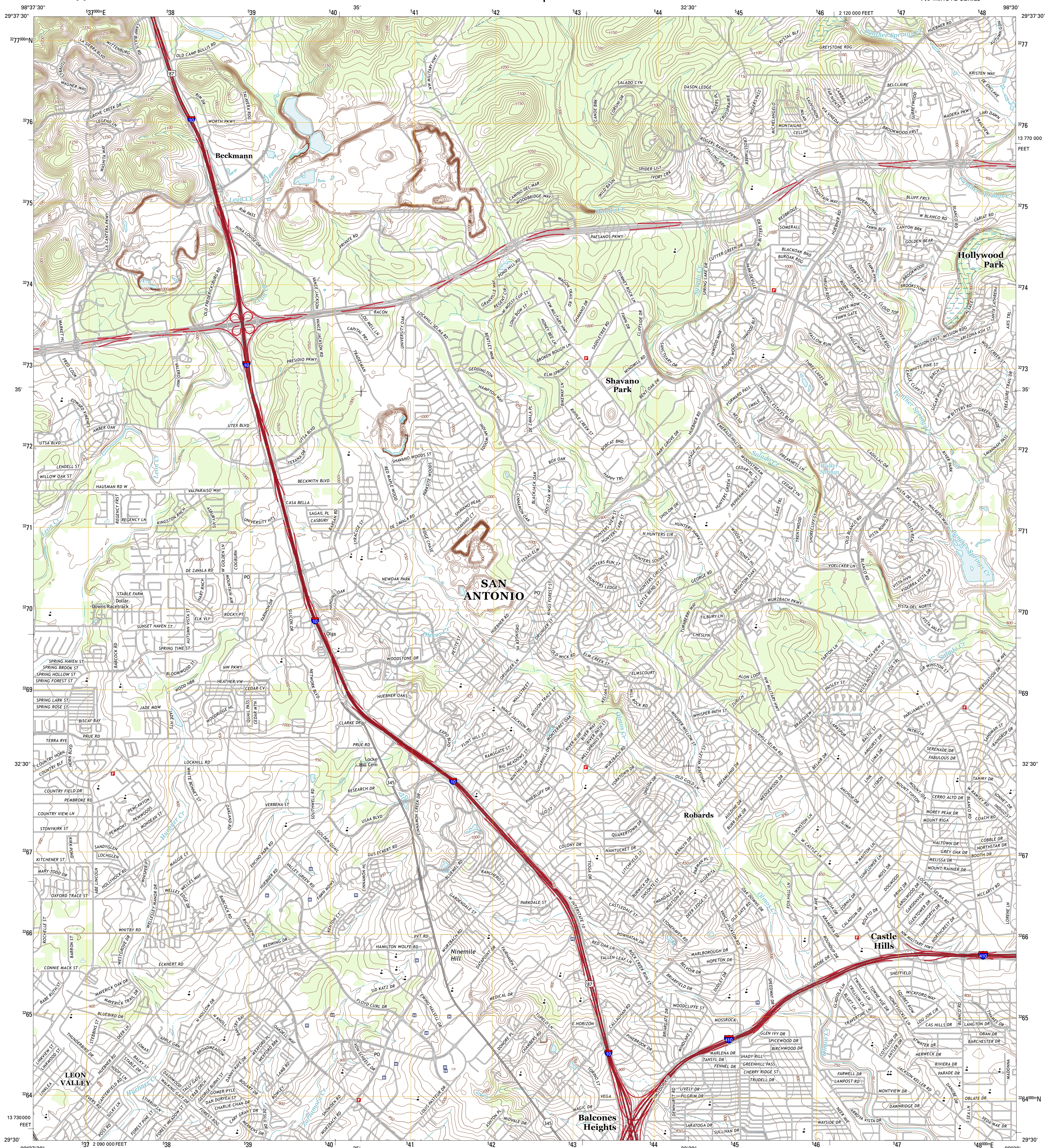




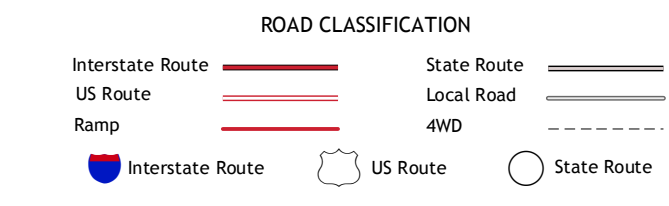
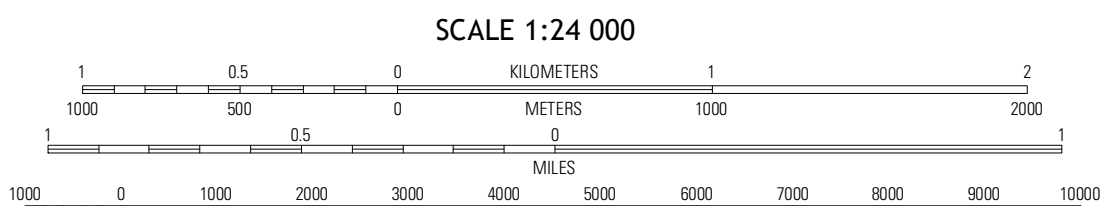
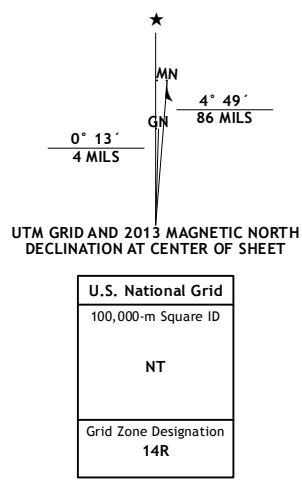
U.S. DEPARTMENT OF THE INTERIOR  
U. S. GEOLOGICAL SURVEY



CASTLE HILLS QUADRANGLE  
TEXAS-BEXAR CO.  
7.5-MINUTE SERIES



Produced by the United States Geological Survey  
North American Datum of 1983 (NAD83)  
World Geodetic System of 1984 (WGS84). Projection and  
1 000-meter grid: Universal Transverse Mercator, Zone 14R  
10 000-foot ticks: Texas Coordinate System of 1983 (south  
central zone)



Van Roub	Camp Bullis	Bulverde
Helotes	Castle Hills	Longhorn
Culebra Hill	San Antonio West	San Antonio East

Imagery.....NAIP, May 2010  
Roads.....©2006-2012 TomTom  
Names.....GNS, 2012  
Hydrography.....National Hydrography Dataset, 2010  
Contours.....National Elevation Dataset, 2003  
Boundaries.....Census, IBWC, USGS, 1972 - 2012

CONTOUR INTERVAL 10 FEET  
NORTH AMERICAN VERTICAL DATUM OF 1988

This map was produced to conform with the  
National Geospatial Program US Topo Product Standards, 2011.  
A metadata file associated with this product is draft version 0.6.7

CASTLE HILLS, TX  
2013

ADJOINING 7.5 QUADRANGLES