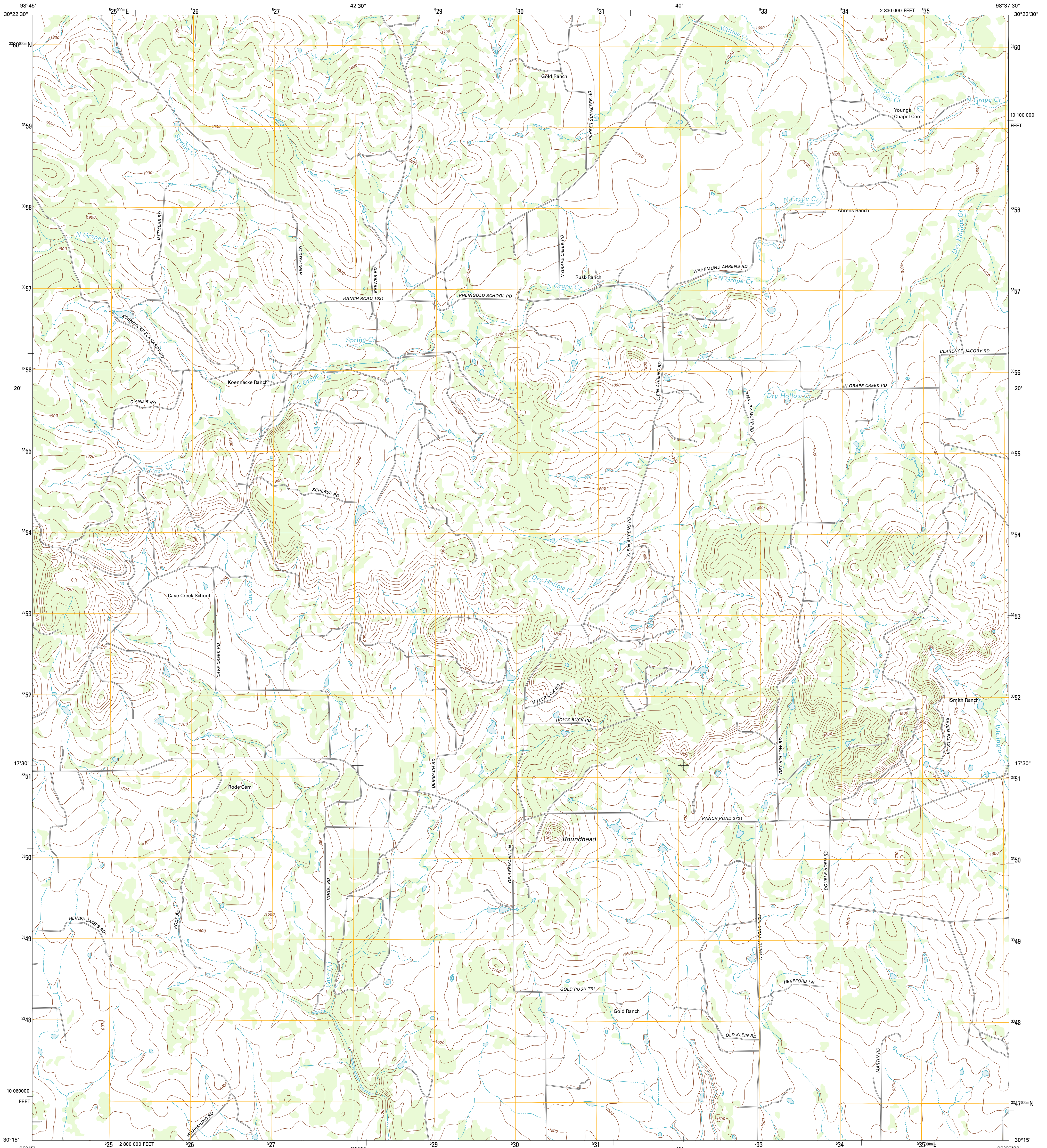




U.S. DEPARTMENT OF THE INTERIOR
U. S. GEOLOGICAL SURVEY

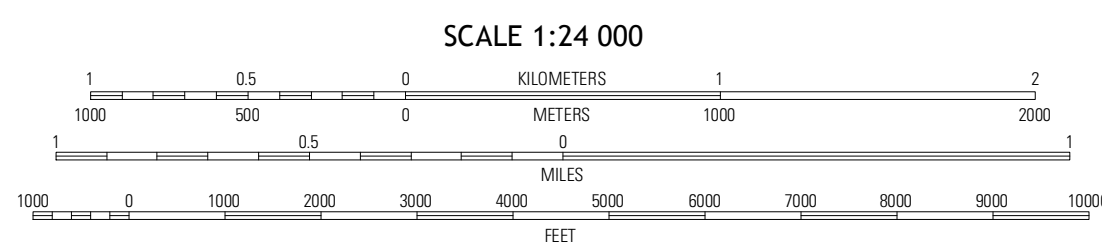
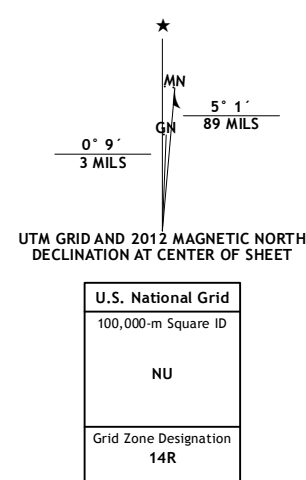


CAVE CREEK SCHOOL QUADRANGLE
TEXAS-GILLESPIE CO.
7.5-MINUTE SERIES



Produced by the United States Geological Survey
North American Datum of 1983 (NAD83)
World Geodetic System of 1984 (WGS84). Projection and
1 000-meter grid: Universal Transverse Mercator, Zone 14R
10 000-foot ticks: Texas Coordinate System of 1983 (central zone)

Imagery.....NAIP, May 2010
Roads.....©2006-2012 TomTom
Names.....©2006-2012 TomTom
Hydrography.....National Hydrography Dataset, 2010
Contours.....National Elevation Dataset, 2003
Boundaries.....Census, BWC, IBC, USGS, 1972 - 2012



CONTOUR INTERVAL 20 FEET
NORTH AMERICAN VERTICAL DATUM OF 1988
This map was produced to conform with the
National Geospatial Program US Topo Product Standard, 2011.
A metadata file associated with this product is draft version 0.6.7



QUADRANGLE LOCATION

Crabapple	Willow City	Blowout
Frederickburg	Cave Creek School	Rocky Creek
Cain City	Stonewall	Hye

ROAD CLASSIFICATION

Interstate Route	State Route
US Route	Local Road
Ramp	AWD
Interstate Route	US Route
	State Route

CAVE CREEK SCHOOL, TX
2012

ADJOINING 7.5 QUADRANGLES