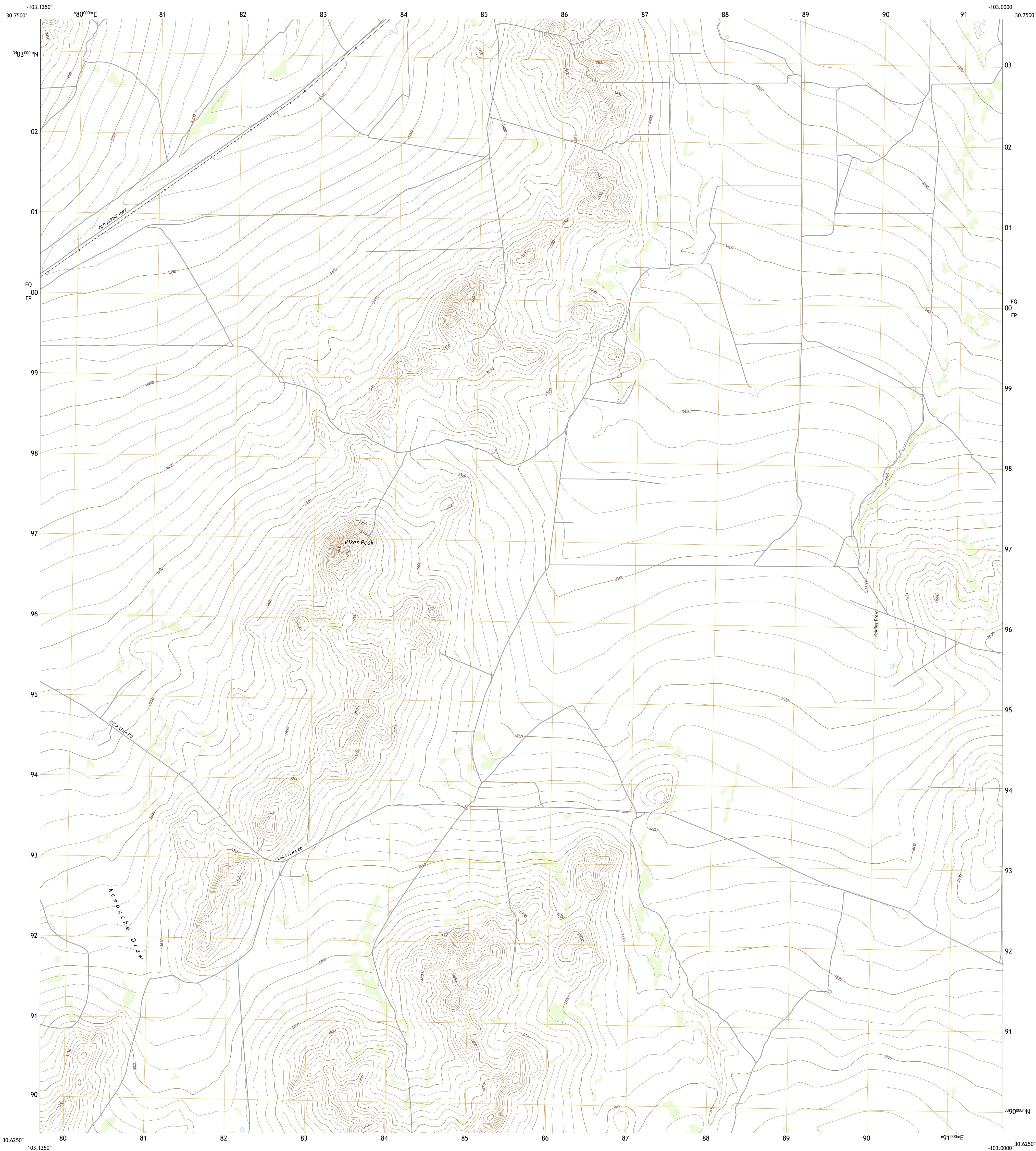




U.S. DEPARTMENT OF THE INTERIOR
U.S. GEOLOGICAL SURVEY



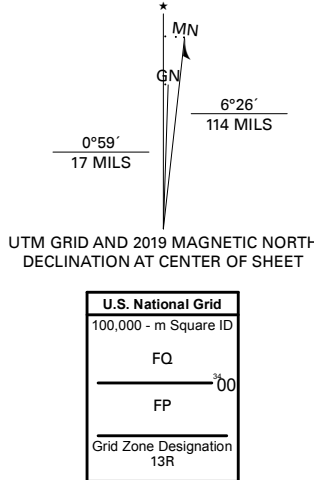
CAVE MESA NE QUADRANGLE
TEXAS - PECOS COUNTY
7.5-MINUTE SERIES



Produced by the United States Geological Survey

North American Datum of 1983 (NAD83)
World Geodetic System of 1984 (WGS84), Projection and
1 000 meter grid/Universal Transverse Mercator, Zone 13R
This map is not a legal document. Boundaries may be
generalized for this map scale. Private lands within government
reservations may not be shown. Obtain permission before
entering private lands.

Imagery.....NAIP, August 2016 - November 2016
Roads.....U.S. Census Bureau, 2015
Names.....GNIS, 1979 - 2017
Hydrography.....National Hydrography Dataset, 2002 - 2018
Contours.....National Elevation Dataset, 2006
Boundaries.....Multiple sources; see metadata file 2016 - 2017
Wetlands.....FWS National Wetlands Inventory Not Available



CONTOUR INTERVAL 10 FEET
NORTH AMERICAN VERTICAL DATUM OF 1988
This map was produced to conform with the
National Geospatial Program US Topo Product Standard, 2011.
A metadata file associated with this product is draft version 0.6.18



QUADRANGLE LOCATION

1	2	3
4	5	6
7	8	9

1 Belding SW
2 Belding
3 Twelvemile Mesa
4 Chancellor
5 Sierra Madera NW
6 Cave Mesa
7 Cave Mesa SE
8 Sierra Madera

ROAD CLASSIFICATION		
Expressway	Local Connector	
Secondary Hwy	Local Road	
Ramp	4WD	
Interstate Route	US Route	State Route

CAVE MESA NE, TX
2019



NSN 75643016395429
NSA REF NO. USGSX24K7721