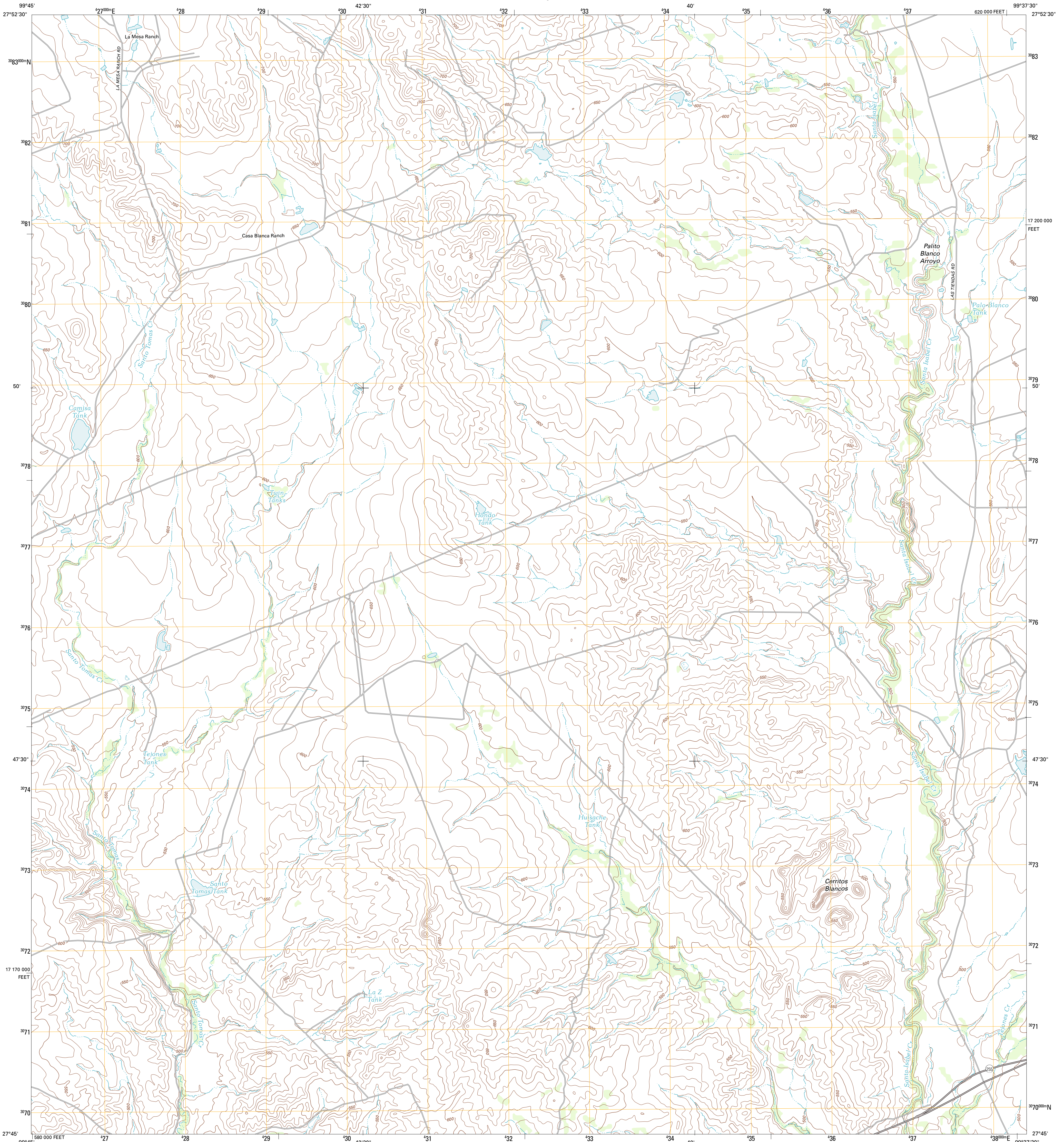




U.S. DEPARTMENT OF THE INTERIOR  
U. S. GEOLOGICAL SURVEY

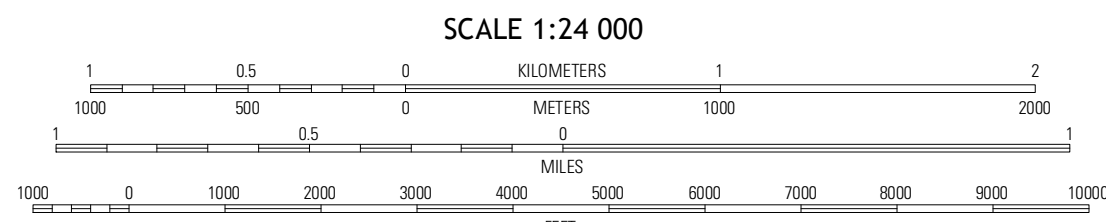
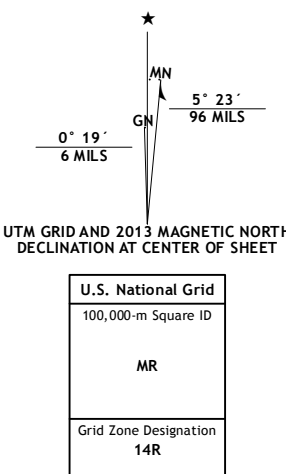


CERRITOS BLANCOS QUADRANGLE  
TEXAS-WEBB CO.  
7.5-MINUTE SERIES



Produced by the United States Geological Survey  
North American Datum of 1983 (NAD83)  
World Geodetic System of 1984 (WGS84). Projection and  
1 000-meter grid: Universal Transverse Mercator, Zone 14R  
10 000-foot ticks: Texas Coordinate System of 1983 (south zone)

Imagery.....NAIP, April 2010  
Roads.....©2006-2012 TomTom  
Names.....GNS, 2012  
Hydrography.....National Hydrography Dataset, 2010  
Contours.....National Elevation Dataset, 2004  
Boundaries.....Census, IBWC, IBC, USGS, 1972 - 2012



CONTOUR INTERVAL 10 FEET  
NORTH AMERICAN VERTICAL DATUM OF 1988  
This map was produced to conform with the  
National Geospatial Program US Topo Product Standards, 2011.  
A metadata file associated with this product is draft version 0.6.7



QUADRANGLE LOCATION

Pinto Creek	Las Tiendas	Spohn Ranch
San Pedro Hill	Cerritos Blancos	Nido Ranch
South of San Pedro Hill	Dolores Ranch	Cuevo Creek

ROAD CLASSIFICATION

Interstate Route	State Route
US Route	Local Road
Ramp	4WD

CERRITOS BLANCOS, TX  
2013

ADJOINING 7.5 QUADRANGLES