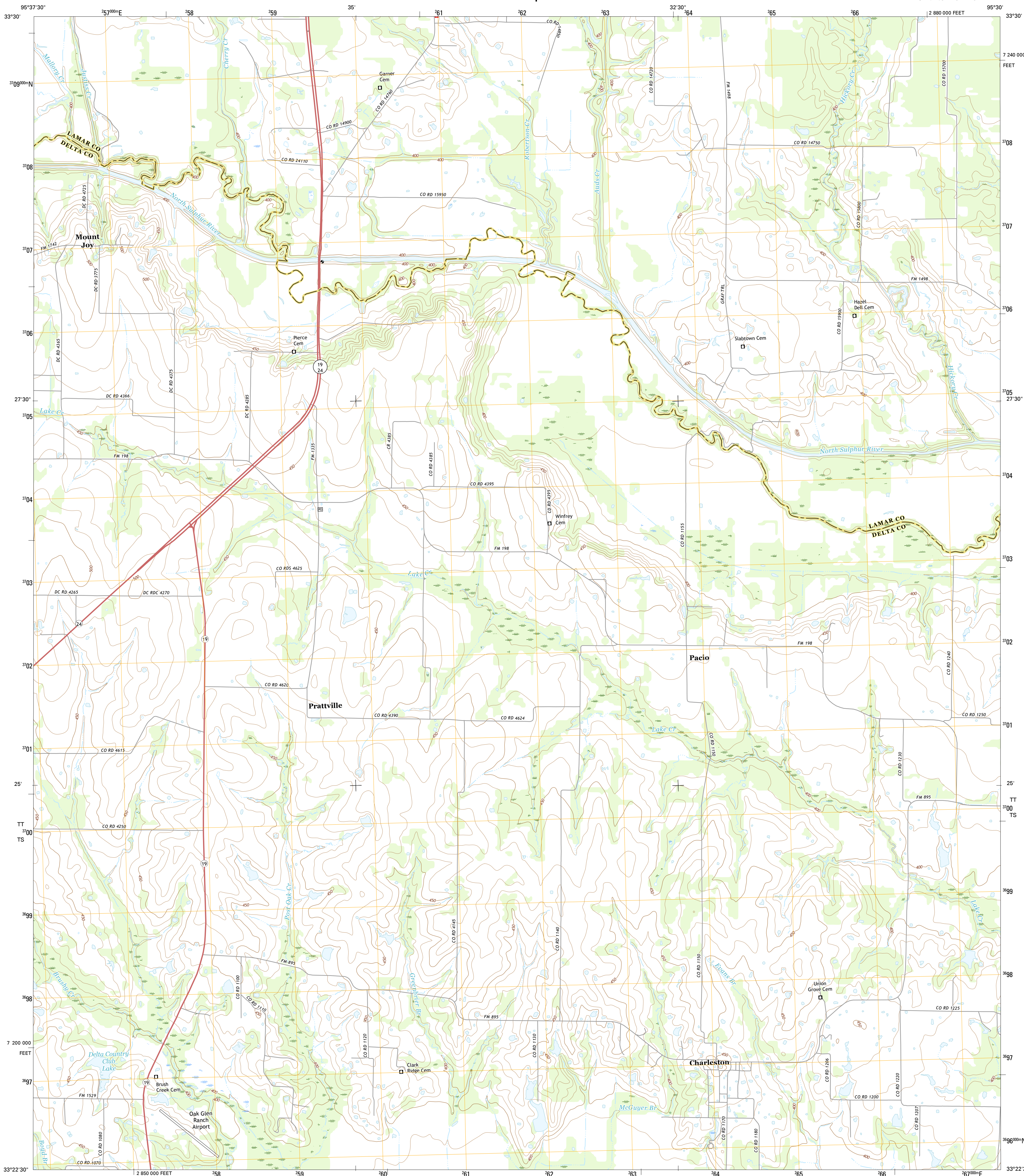




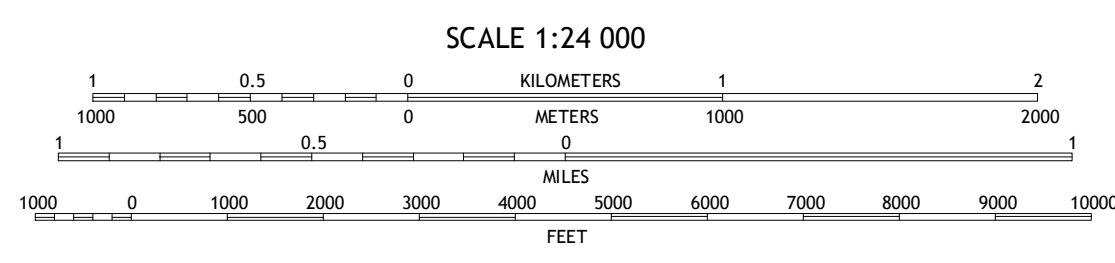
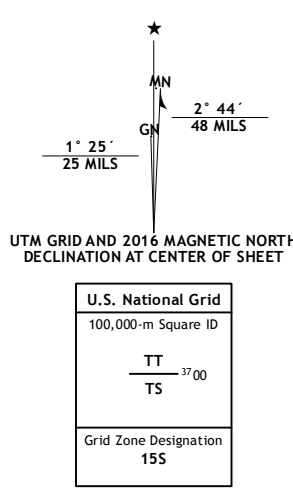
U.S. DEPARTMENT OF THE INTERIOR
U.S. GEOLOGICAL SURVEY



CHARLESTON QUADRANGLE
TEXAS
7.5-MINUTE SERIES



Produced by the United States Geological Survey
 North American Datum of 1983 (NAD83)
 World Geodetic System of 1984 (WGS84), Projection and
 1000-meter grid: Universal Transverse Mercator, Zone 15S
 10 000-foot ticks: Texas Coordinate System of 1983 (north
 central zone)
 This map is not a legal document. Boundaries may be
 generalized for this map scale. Private lands within government
 reservations may not be shown. Obtain permission before
 entering private lands.
 Imagery:.....NIP, July 2014
 Roads:.....U.S. Census Bureau, 2014 - 2015
 Names:.....GNIS, 2015
 Hydrography:.....National Hydrography Dataset, 2014
 Contours:.....National Elevation Dataset, 2004
 Boundaries:.....Multiple sources; see metadata file 1972 - 2015
 Wetlands:.....FWS National Wetlands Inventory 1977 - 2014



CONTOUR INTERVAL 10 FEET
 NORTH AMERICAN VERTICAL DATUM OF 1988
 This map was produced to conform with the
 National Geospatial Program US Topo Product Standard, 2011.
 A metadata file associated with this product is draft version 0.6.19



ROAD CLASSIFICATION

Expressway	Local Connector
Secondary Hwy	Local Road
Ramp	4WD
Interstate Route	US Route
	State Route

ADJOINING QUADRANGLES

1	2	3
4	5	6
7	8	

- 1 Roxtan
- 2 Bardstown
- 3 Pattonville
- 4 Cooper North
- 5 Minter
- 6 Cooper South
- 7 Tia
- 8 Sulphur Bluff

CHARLESTON, TX
2016



NSN 7540-01-339-4620
 NGA REF NO. USGSX24K6200