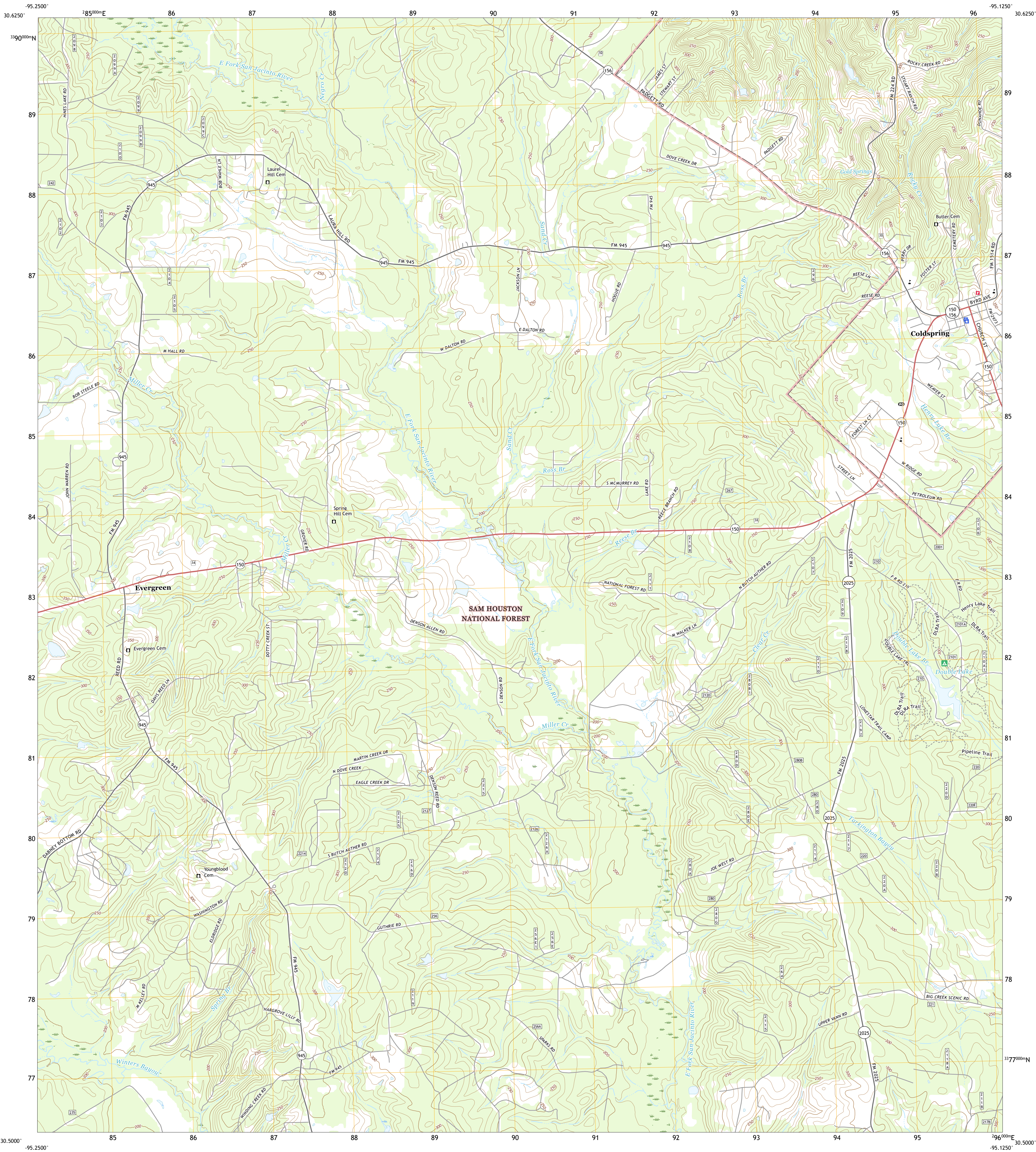




U.S. DEPARTMENT OF THE INTERIOR
U.S. GEOLOGICAL SURVEY



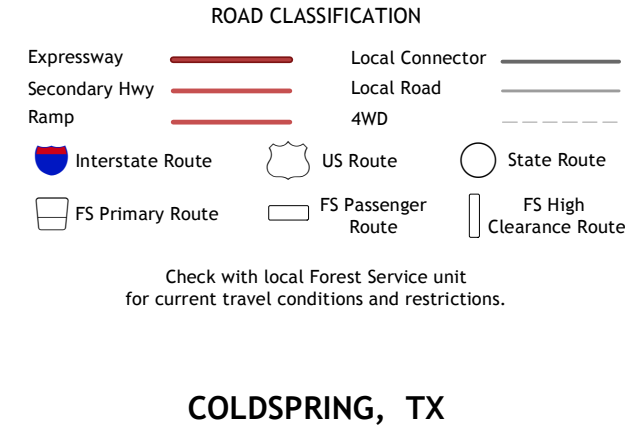
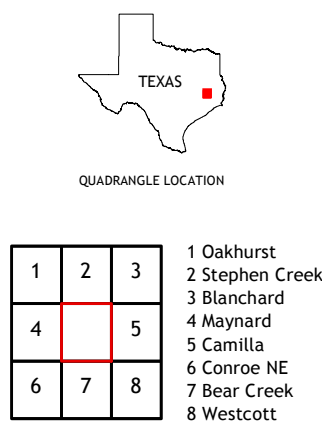
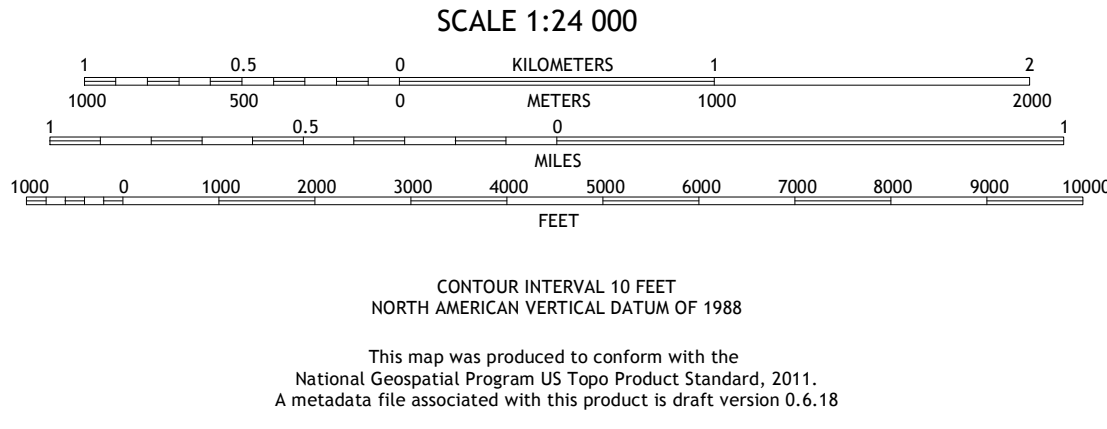
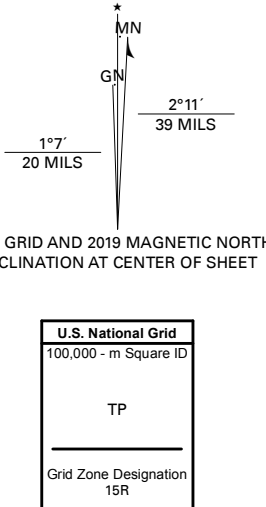
COLDSRING QUADRANGLE
TEXAS - SAN JACINTO COUNTY
7.5-MINUTE SERIES



Produced by the United States Geological Survey

North American Datum of 1983 (NAD83)
World Geodetic System of 1984 (WGS84). Projection and
1 000-meter grid: Universal Transverse Mercator, Zone 15R
This map is not a legal document. Boundaries may be
generalized for this map scale. Private lands within government
reservations may not be shown. Obtain permission before
entering private lands.

Imagery.....NAIP, September 2016 - November 2016
Roads.....U.S. Census Bureau, 2015
Roads within US Forest Service Lands.....FSTopo Data
with limited Forest Service updates, 2012 - 2015
Names.....GNIS, 1979 - 2018
Hydrography.....National Hydrography Dataset, 2003 - 2018
Contours.....National Elevation Dataset, 2010 - 2017
Boundaries.....Multiple sources; see metadata file
Wetlands.....FWS National Wetlands Inventory 1982 - 1993



COLDSRING, TX
2019

