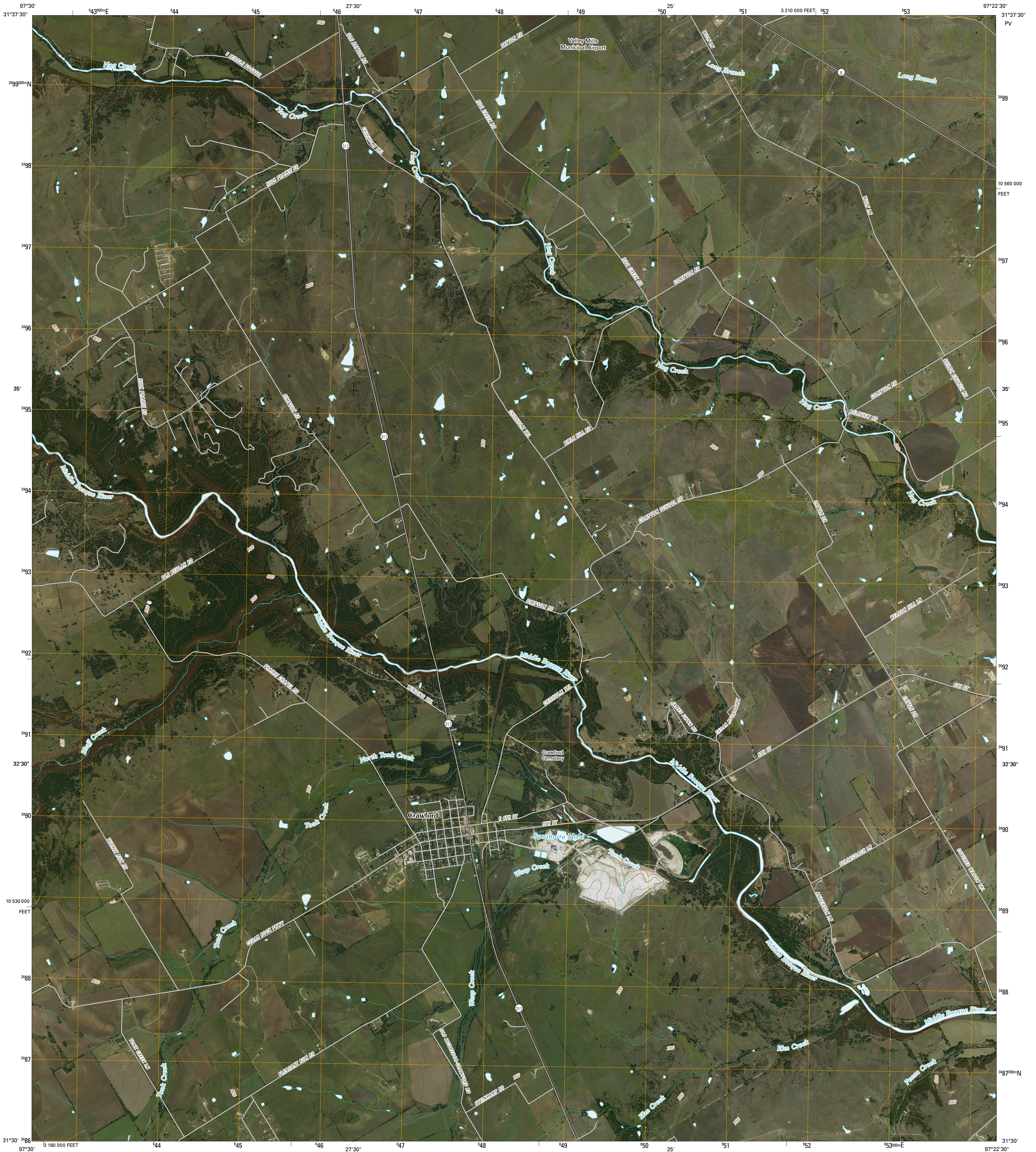




U.S. DEPARTMENT OF THE INTERIOR
U. S. GEOLOGICAL SURVEY

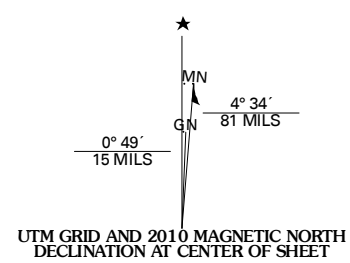


CRAWFORD QUADRANGLE
TEXAS
7.5-MINUTE SERIES

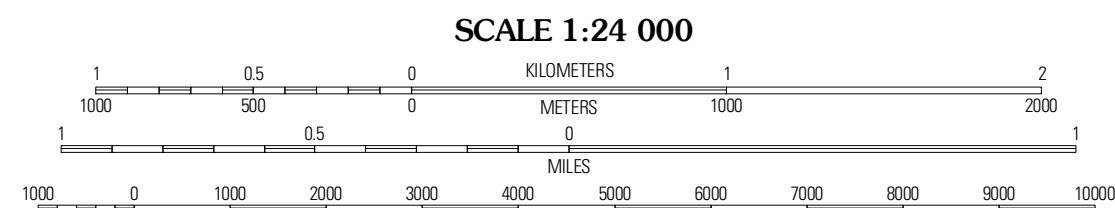


Produced by the United States Geological Survey
North American Datum of 1983 (NAD83)
World Geodetic System of 1984 (WGS84). Projection and
1 000-meter grid; Universal Transverse Mercator, Zone 14R
10 000-foot ticks; Texas Coordinate System of 1983
(central zone)

Imagery.....NAIP, October 2008
Roads.....US Census Bureau TIGER data
with limited USGS updates, 2004
Names.....GNIS, 2008
Hydrography.....National Hydrography Dataset, 1995
Contours.....National Elevation Dataset, 2004



U.S. National Grid	100,000 Meter Square ID
PA	14R
PV	14R
Grid Zone Designation	14R



SCALE 1:24 000

CONTOUR INTERVAL 10 FEET

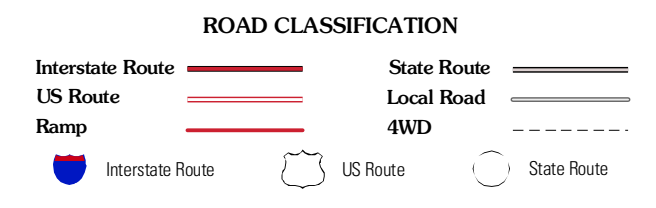
This map was produced to conform with version 0.5.10 of the
draft USGS Standards for 7.5-Minute Quadrangle Maps.
A metadata file associated with this product is also draft version 0.5.10



QUADRANGLE LOCATION

Mohem	Valley Mills	China Springs
Coryell	Crawford	Speepleville
Oglesby	McGregor	South Bosque

ADJOINING 7.5 QUADRANGLES
TX 1397-422



CRAWFORD, TX
2010