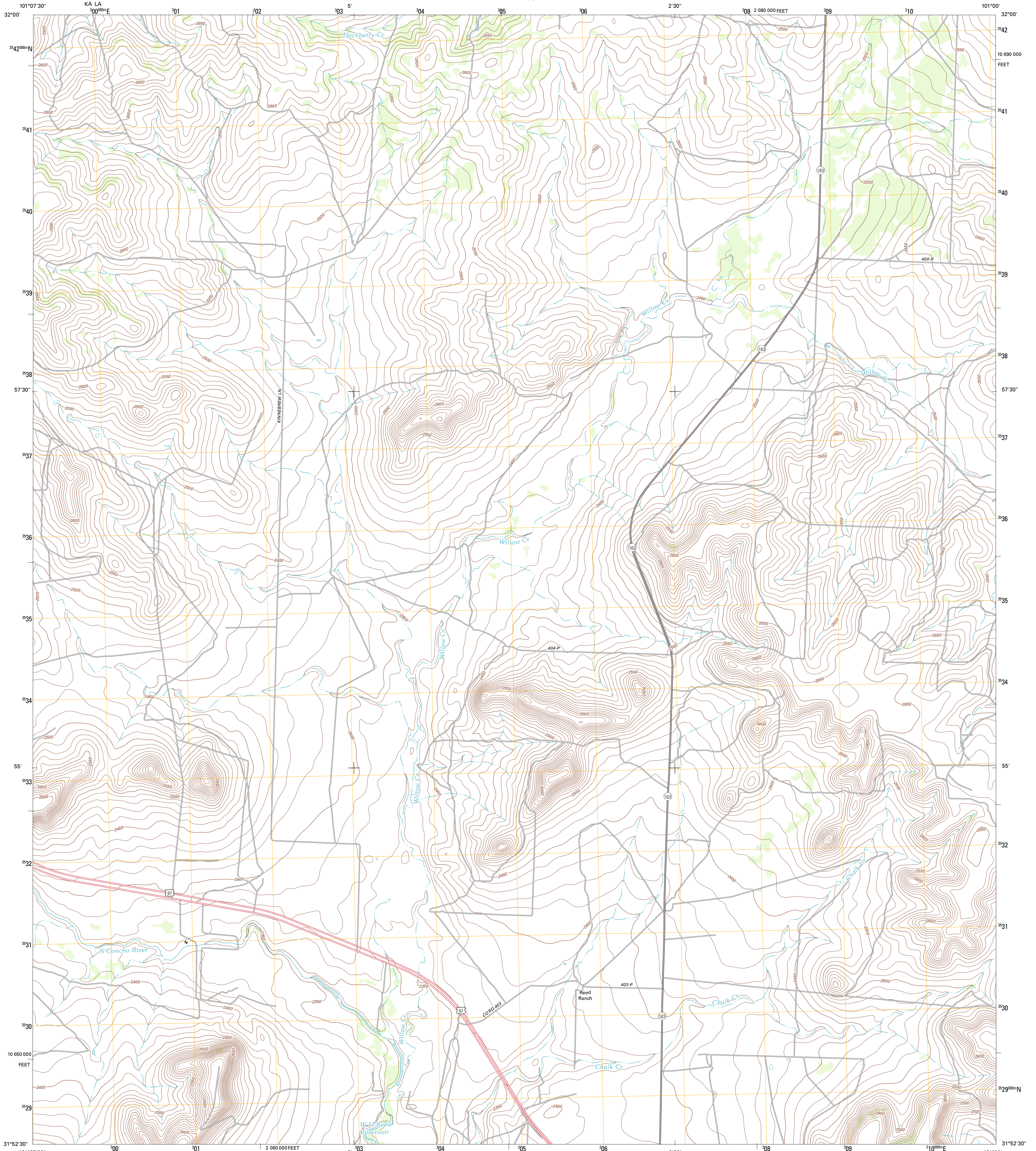




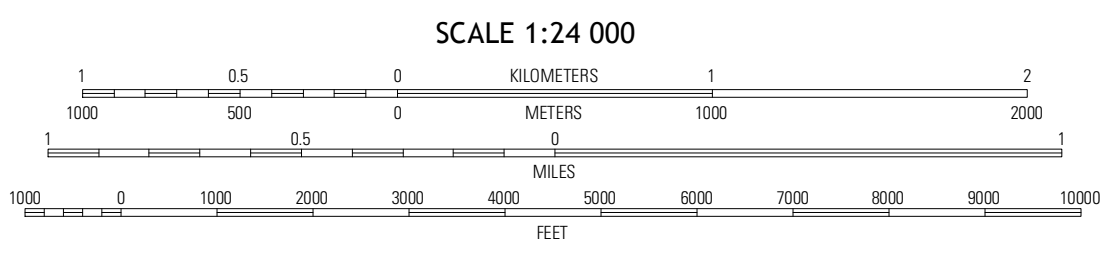
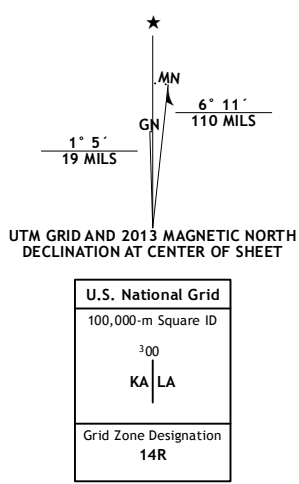
U.S. DEPARTMENT OF THE INTERIOR
U. S. GEOLOGICAL SURVEY



CUMBIE DRAW NE QUADRANGLE
TEXAS-STERLING CO.
7.5-MINUTE SERIES



Produced by the United States Geological Survey
North American Datum of 1983 (NAD83)
World Geodetic System of 1984 (WGS84). Projection and
1 000-meter grid: Universal Transverse Mercator, Zone 14R,
10 000-foot ticks: Texas Coordinate System of 1983 (central
zone)



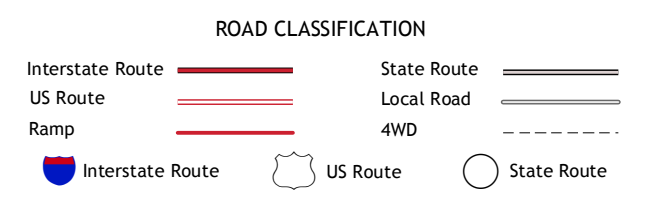
CONTOUR INTERVAL 10 FEET
NORTH AMERICAN VERTICAL DATUM OF 1988
This map was produced to conform with the
National Geospatial Program US Topo Product Standards, 2011.
A metadata file associated with this product is draft version 0.6.7



QUADRANGLE LOCATION

Herrick Mountain	Buffalo Draw	McWhorter Mountain
Sand Bluff Draw	Cumbie Draw NE	Sterling City NW
Glass Ranch	Cumbie Draw	Sterling City

ADJOINING 7.5' QUADRANGLES



CUMBIE DRAW NE, TX
2013