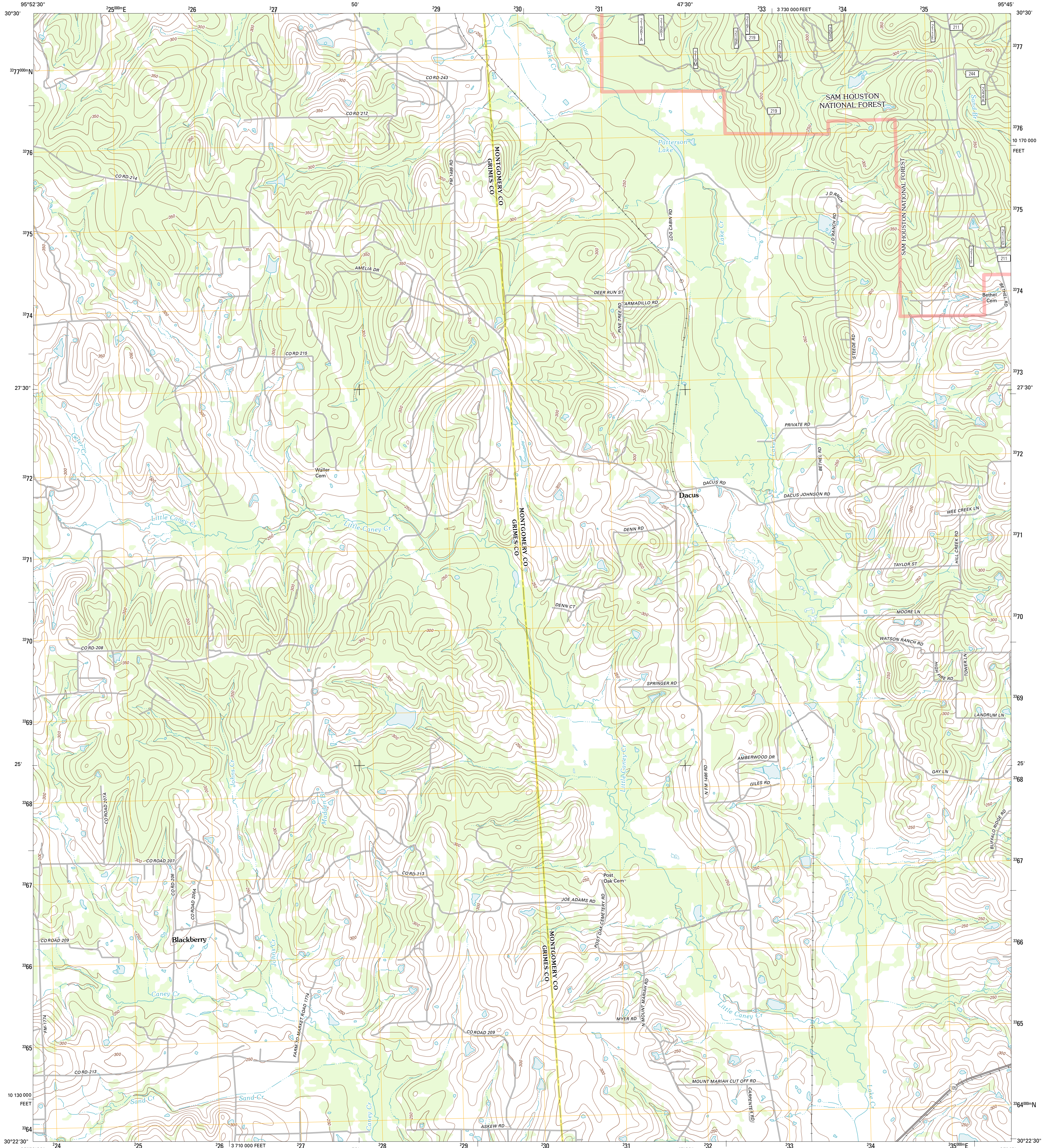




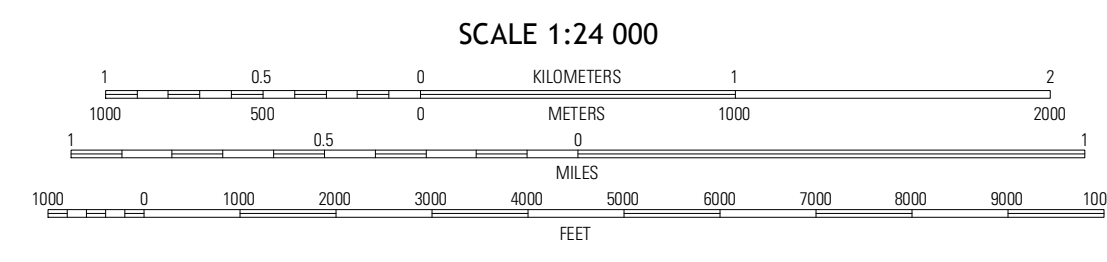
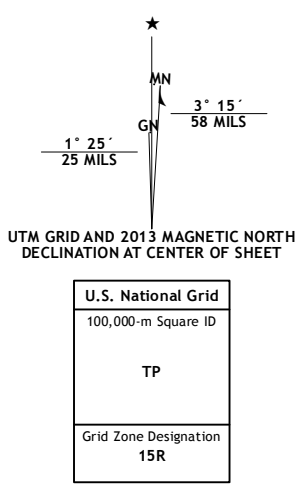
U.S. DEPARTMENT OF THE INTERIOR
U. S. GEOLOGICAL SURVEY



DACUS QUADRANGLE
TEXAS
7.5-MINUTE SERIES



Produced by the United States Geological Survey
North American Datum of 1983 (NAD83)
World Geodetic System of 1984 (WGS84) - Projection and
1 000-meter grid: Universal Transverse Mercator, Zone 15R
10 000-foot ticks: Texas Coordinate System of 1983 (central
zone)



QUADRANGLE LOCATION

Roose Prairie	Richards	San Jacinto
Anderson	Dacus	Montgomery
Stoneham	Plasterville	Kennan

- ROAD CLASSIFICATION
- Interstate Route
 - US Route
 - Ramp
 - FS Primary Route
 - State Route
 - Local Road
 - 4WD
 - FS Passenger Route
 - FS High Clearance Route
- Check with local Forest Service unit
for current travel conditions and restrictions.

Imagery: N.A.P., May 2010
Roads: ©2006-2012 TomTom
Roads within US Forest Service Lands: ©2010-2012
with limited Forest Service updates, 2012
Names: G.N.S., 2012
Hydrography: National Hydrography Dataset, 2010
Contours: National Elevation Dataset, 2003
Boundaries: Census, IBC, USGS, 1972 - 2012

CONTOUR INTERVAL 10 FEET
NORTH AMERICAN VERTICAL DATUM OF 1988

This map was produced to conform with the
National Geospatial Program US Topo Product Standard, 2011.
A metadata file associated with this product is draft version 0.6.7

DACUS, TX
2013

ADJOINING 7.5 QUADRANGLES