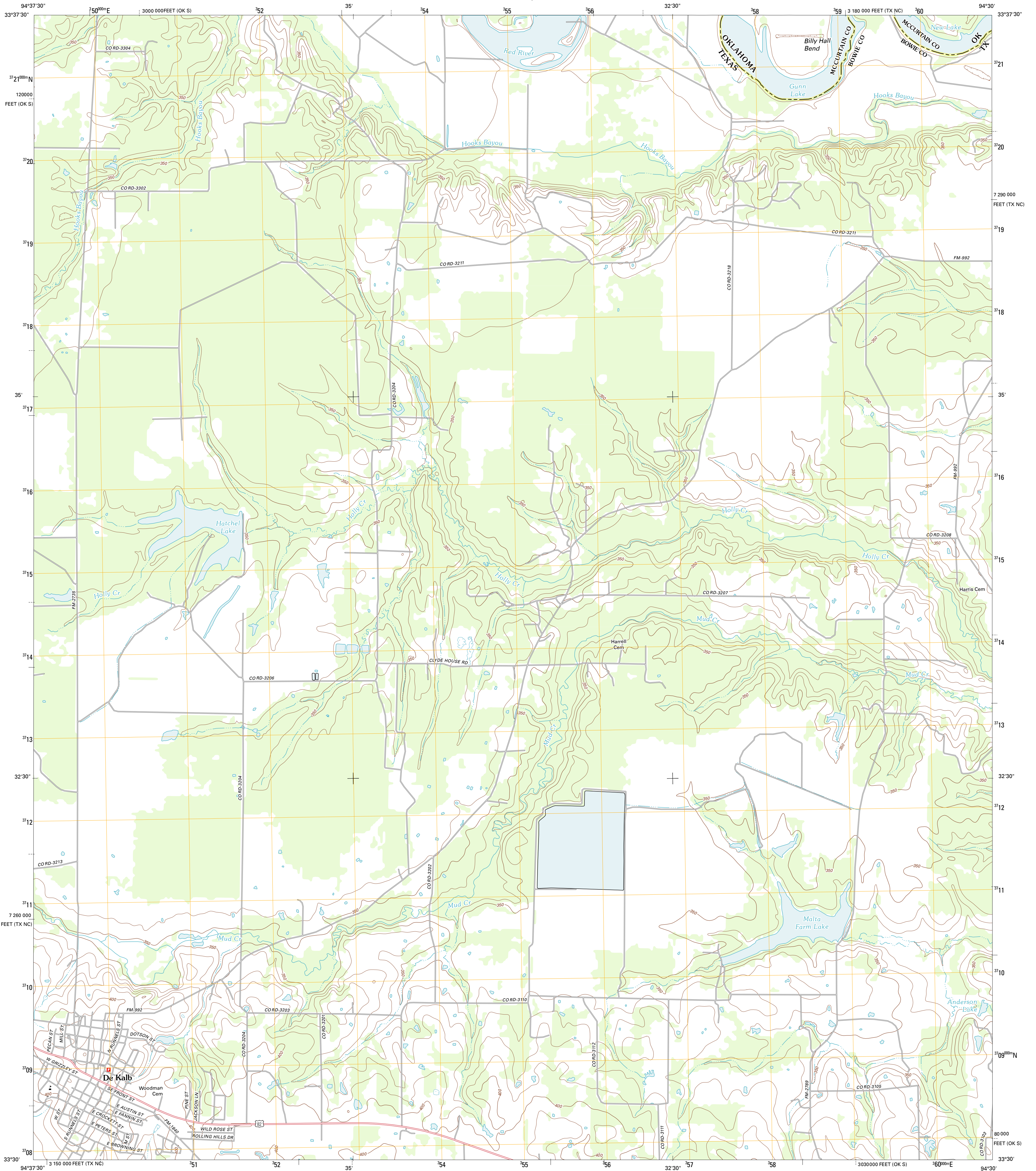




U.S. DEPARTMENT OF THE INTERIOR
U. S. GEOLOGICAL SURVEY



DE KALB QUADRANGLE
TEXAS-OKLAHOMA
7.5-MINUTE SERIES

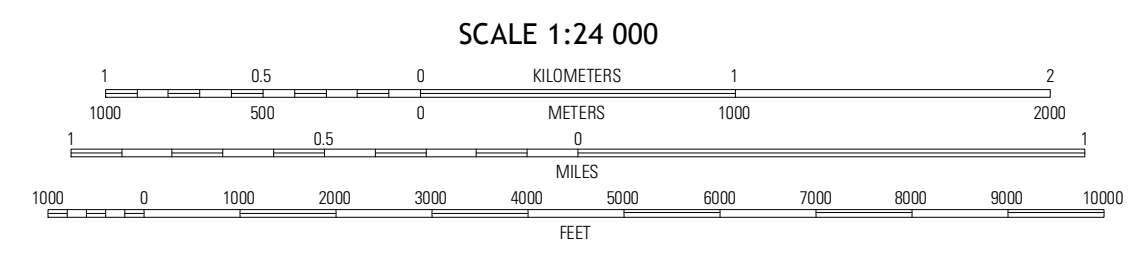


Produced by the United States Geological Survey
North American Datum of 1983 (NAD83)
World Geodetic System of 1984 (WGS84). Projection and
1 000-meter grid: Universal Transverse Mercator, Zone 15S
10 000-foot ticks: Texas Coordinate System of 1983 (north
central zone), Oklahoma Coordinate System of 1983 (south
zone)

Imagery.....NAIP, August 2010
Roads.....©2006-2012 TomTom
Names.....GNSS, 2012
Hydrography.....National Hydrography Dataset, 2010
Contours.....National Elevation Dataset, 2004
Boundaries.....Census, IBWC, IBC, USGS, 1972-2012

UTM GRID AND 2013 MAGNETIC NORTH
DECLINATION AT CENTER OF SHEET

U.S. National Grid 100,000 = Square ID
UTM
Grid Zone Designation 15S



CONTOUR INTERVAL 10 FEET
NORTH AMERICAN VERTICAL DATUM OF 1988

This map was produced to conform with the
National Geospatial Program US Topo Product Standard, 2011.
A metadata file associated with this product is draft version 0.6.7



QUADRANGLE LOCATION

De Kalb NW	Tom	Foreman
Oak Grove	De Kalb	Daniels Chapel
Hodgson	Malta	New Boston

ADJOINING 7.5 QUADRANGLES

ROAD CLASSIFICATION

Interstate Route	State Route
US Route	Local Road
Ramp	4WD

Legend symbols for road types.

DE KALB, TX-OK
2013